



SAP Business Data Cloud

Our capability statement? Our heart beats for data, xP&A and AI.

Q3/2025

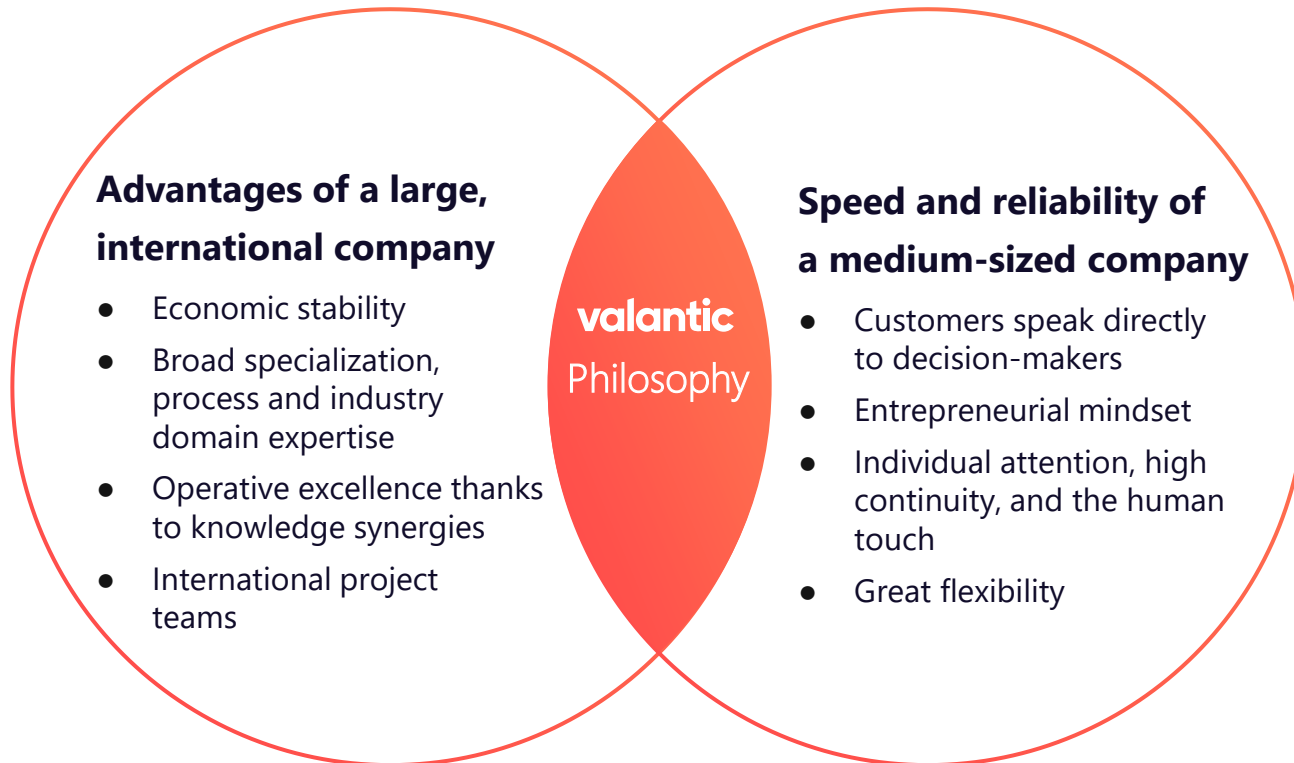
valantic



Who is valantic?

valantic is different ...

we combine the advantages of decentralized entrepreneurship with the strength of a large organization



AUSTRIA
BELGIUM
BULGARIA
DENMARK
GERMANY
INDIA

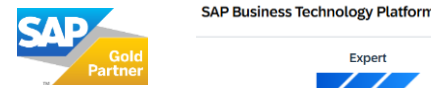
LITHUANIA
LUXEMBOURG
MALAYSIA
NETHERLANDS
PORTUGAL
ROMANIA

SWITZERLAND
SERBIA
SPAIN
UK
UKRAINE
USA

Successfully from strategy to implementation

Facts & Figures

+4,000 Experts at valantic (2.500 in DEU) (1.100 in SAP)	+600m€ Revenue in 2024	<9% Employee Churn
>65 Experts for SAP Analytics worldwide	>100 SAP Analytics projects (last 5 years)	15 SAP Datasphere customers
5 Analytics hubs at valantic DE, PT, ES, AT, IN	1 SAP Business Data Cloud Customer	8th of 131 SAP partner finder position DE Data & xP&A



The partner for digitalization -
from strategy to
implementation to operation!

Track Record* – Success Stories



Some Customers | venzo & inspari

PANDORA

ENERGINET

DIN·L

novozymes 

GN

DSC
FREMTIDENS
MARKEDS
PLADSER

BESTSELLER

nuuday 

 MAERSK

NORLYS
ENERGY
TRADING

BoConcept

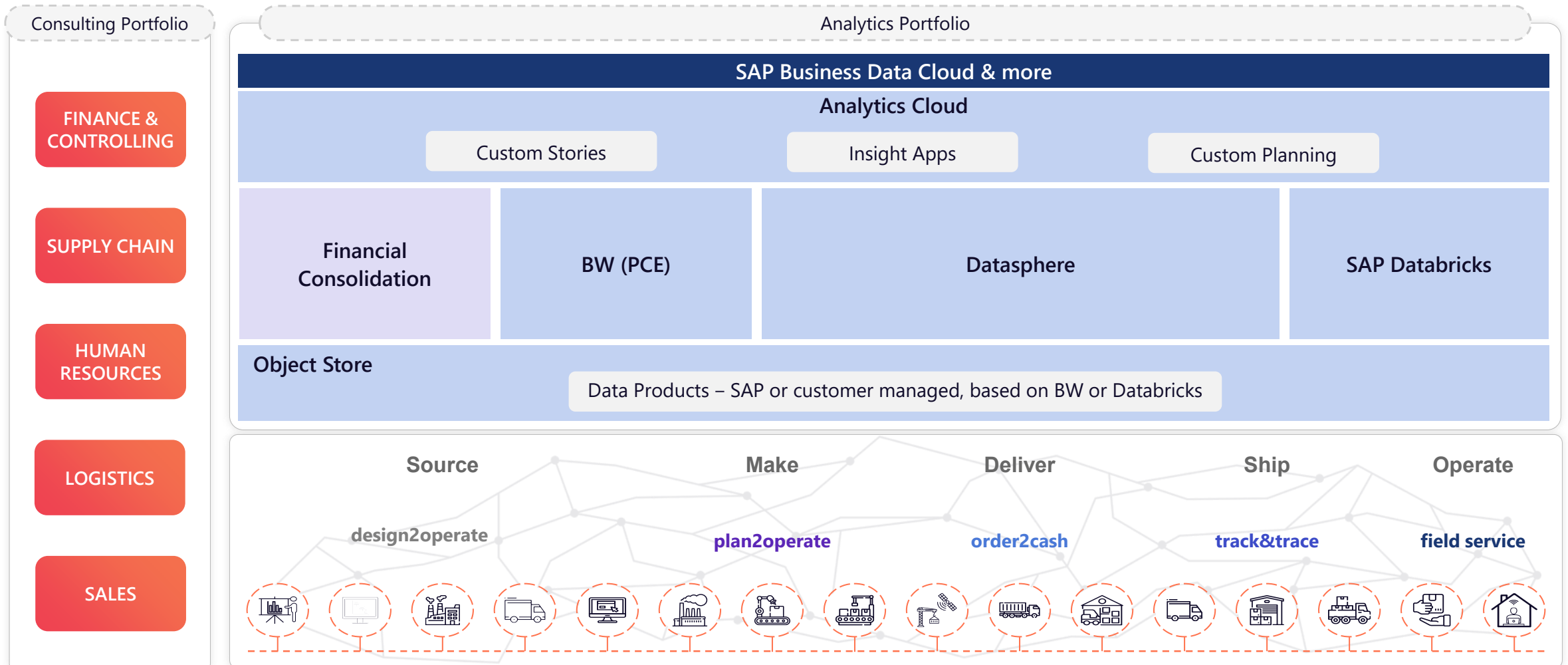

NIC. CHRISTIANSEN GRUPPEN

Ørsted

DSV



Consulting & Data Expertise – Empowering Your xP&A* and Data* projects with valantic



SAP Datasphere

“

We were looking for a partner with whom we could work in an agile manner and who would drive the project forward. That's why we decided in favour of valantic."



Detlef Martensen
Head of IT bei Dockweiler



Dockweiler Project – Replacement of IBM Cognos with SAP Datasphere

Awarded as "Accelerator Package" from SAP

valantic has been recognized for its innovative approach in transitioning from IBM Cognos to SAP Datasphere as part of the project at Dockweiler AG. SAP has recognized this use case as an 'Accelerator Package'. This achievement highlights valantic's expertise in migrating Data Warehouse systems and underscores the robust capabilities of SAP Datasphere. When combined with SAP S/4HANA and SAP Analytics Cloud, it offers a future-proof and integrative solution.



SAP Validated
Partner Use Case

Agenda today

13:20-14:10 **SAP BDC in action. Project insights**

valantic shares insights about the last 3 months of doing BDC project at our customers:

1. What our SAC, Datasphere and BW customers expect from BDC?
2. What are our customers doing to be ready for BDC?
3. Review and share customer experiences of having BDC in action



Marcel Beckmann

Manager SAP Analytics, CoE Lead xData at Valantic

 [LinkedIn](#)



Stefan Blinkmann

Head of SAP Analytics at Valantic

 [LinkedIn](#)



Manuel Essers

SAP Analytics Manager at Valantic

 [LinkedIn](#)

Why SAP Business Data Cloud

What our SAC, Datasphere and BW customers expect from BDC?

Where innovation meets data



Analytics Platform
for all data

Bringing together
applications, data and AI
in a SaaS **platform**



Analytics Platform
for all SAP data

Unified and scalable data
platform for all curated
SAP data



Data Responsibility

Context aware intelligent
applications and business-
ready **data products**



Analytics Platform
for all data

Pivotal evolution of the
business **data fabric**



Planning,
Forecasting,
Insights

Data science and **ML** use
cases using SAP
Databricks



Replacement of
BW

Path for SAP **Business
Warehouse**
modernization



Be open for NON-
SAP data & apps

Scale through ecosystem
Integration with advanced
sharing & data exchange



Daily AI for
everybody

Infuse Business **AI** with
Joule and JustAsk

Why SAP Business Data Cloud

What our SAC, Datasphere and BW customers expect from BDC?

Where innovation meets data

... customers ask for architectural advice and sparring to chose the „right“ way



Replacement of
BW

Path for SAP **Business
Warehouse**
modernization

- BW before 7.5 on HANA
- BW 7.5 with BPC, BW-IP and or SEM-BCS
- BW 7.5 on HANA with ongoing S/4HANA Brownfield
- BW 7.5 on HANA with S/4HANA in preparation
- BW/4 & S/4HANA already in production since a few years
- currently migrating to BW/4
- BW* + first use cases in Datasphere in Side Car approach
- BW* where Datasphere „sits“ on top
- ...

Why SAP Business Data Cloud

What our SAC, Datasphere and BW customers expect from BDC?

Where innovation meets data

... customers are happy that they are on the right way



Replacement of
BW

Path for SAP **Business
Warehouse**
modernization

- BEx is almost dead
- BO „only“ for broadcasting
- SAC self service in place for consumers
- Focus on improving SAC self service for content creators
- BDC as push
 - to replace 3rd party tools e.g. Qlik, Tableau, ...
 - to move big planning processes into IBP & SAC
 - with Seamless Planning as push to replace e.g. TM1, Corp. Planner, etc
 - BDC with SAP Databricks to add „advanced“ ML to planning

Why SAP Business Data Cloud

What our SAC, Datasphere and BW customers expect from BDC?

Where innovation meets data

... customers are VERY happy that they are on the right way



Replacement of
BW

Path for SAP **Business
Warehouse**
modernization

- Extend Datasphere business area by business area
- Committed „get rid of BW“ by end of 2027
- Let remaining BW people embrace change to become DSP supporters
- Offer Self-Services to Data Engineers, Data* on SAP data
- BDC as push to
 - store data in object store, share & integrate NON-SAP data
 - eliminate license issue
 - eliminate „3rd-party-ETL “ to get data out of SAP
- ... but .. do we have the right data culture? Data products?

Why SAP Business Data Cloud

What our SAC, Datasphere and BW customers expect from BDC?

... how BDC has changed the projects?

Much more design
work

Bigger footprint of
Analytics in S/4

Common trainings
of Business & IT

SAP does not
speak „SAP“
anymore

Roadmapping

Massive BW-
Housekeeping

Common strategies
of SAP & NON-SAP
IT

Chat your Data

Data Ownership

IT Landscape
harmonization

More templates &
standards

...



FOOD & BEVERAGES

valantic

REFERENCE

Introduction of financial planning in SAP Analytics Cloud with parallel IBP & PP/DS implementation



Challenges

- Time-consuming (7 months), Excel-based planning and complexity of multi-stage top-down and bottom-up planning
- Development of integrated planning for **OPEX** (cost centers, internal orders, intercompany), **sales** (revenues, conditions, deductions), **product costs** (raw materials, packaging), **HR** (FTE, salaries) and **product-customer profitability analysis**



Critical Success Factors

- Pre-study: analysis of existing planning processes and BW+Excel environment to identify challenges and optimization potentials
- Well-maintained BW/4HANA as SPOT to all data (actual and plan)
- Sprint-based project approach for quick development of first prototypes used as a basis to train key users



Benefits

- Enhancing efficiency and flexibility using SAP Analytics Cloud as a central planning platform and BW/4 as central hub for planning data
- Improved transparency and consistency through consolidated data integration and provisioning
- Re-aligned planning process and organization across lines of business and planning horizons



Facts & Figures

- Timeline: Pre-study from 03/2024 to 06/2024
Implementation ongoing with planned Go-live in 02/2026 (SAC+IBP+PP/DS)
- Invest: ~80 MD Design | ~500 MD Build (SAC)
- Tools: BW/4 HANA, Analytics Cloud, IBP
- Publication: in approval process



FOOD & BEVERAGES



valantic

REFERENCE

Implementation of a driver-based forecasting solution with SAP Analytics Cloud Planning



Challenges

- Rapidly changing market conditions require a quick preparation of forecasts several times per year
- KPIs with a focus on income statement and balance sheet should be planned with value drivers and be compared to actuals
- Reporting on the causes of deviations from the plan should help to identify areas of action



Critical Success Factors

- Continuous coaching of future forecast administrators and regular status updates in the steering committee
- Pre-study on KPI-disaggregation and Identification of data sources for pre-filling helping to accelerate forecasting
- On-site user acceptance tests to coach planning users in the handling of the new tool



Benefits

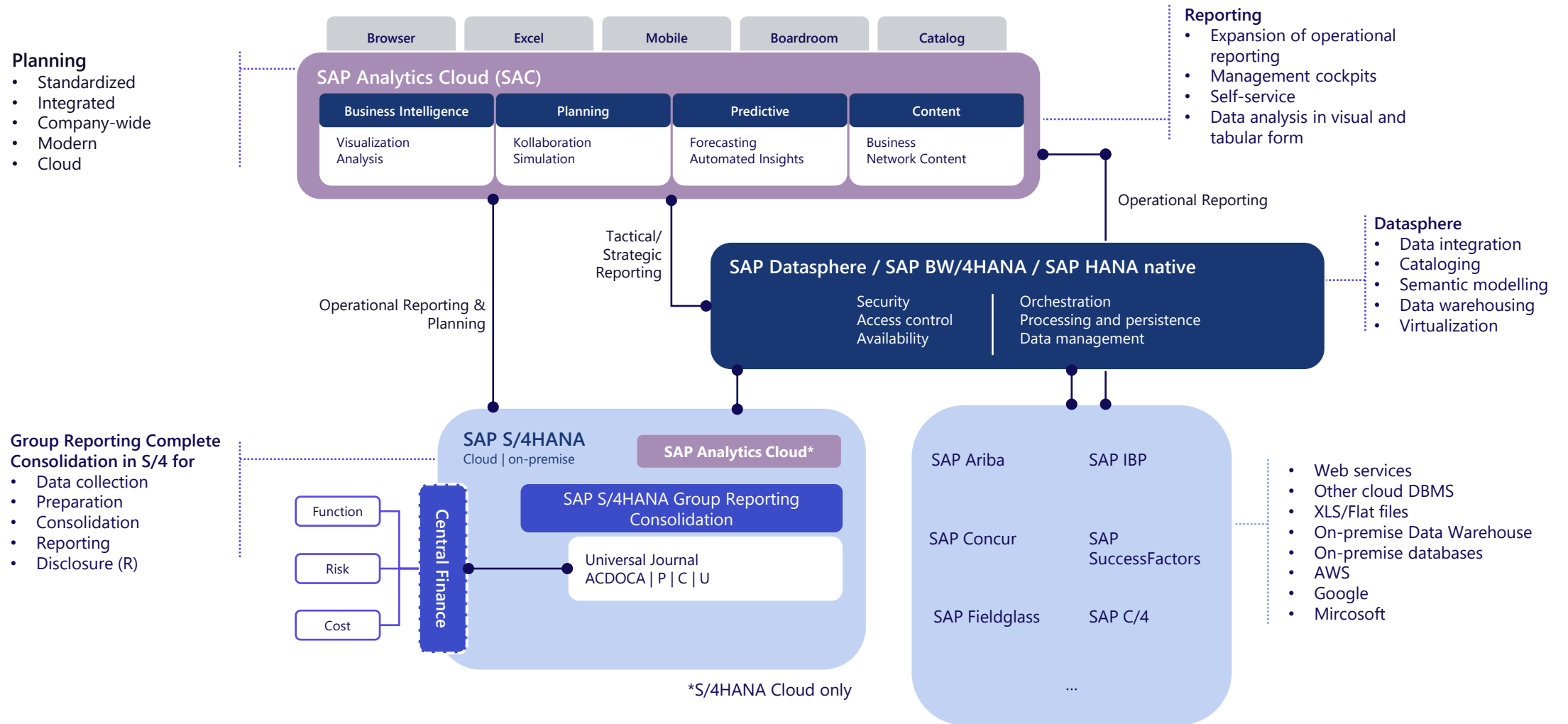
- Development of a resilient planning architecture that absorbs changes in the IT architecture (S/4 migration ongoing, BW7.5 to DSP migration started)
- Use of multiple integrated planning models for a highly automatable forecast (<5 business days)
- Automated reporting of Plan & Actual Data



Facts & Figures

- Timeline: 06/2024 – 03/2025
- Invest: ~500 MD
- Tools: Analytics Cloud, Datasphere, BW 7.5
- Publication: in approval process

System Architecture from the Analytics Perspective (SAP Reference)





FOOD & BEVERAGE

valantic

REFERENCE

Transforming the Analytics Landscape



Challenges

- Stronger focus on cloud technologies and move to SAP Datasphere in SAP Business Data Cloud
- Need to evaluate how a complete transformation of the BW world into the datasphere can be approached and implemented
- Build internal knowledge of the Datasphere



Critical Success Factors

- valantic's coaching approach and extensive experience from several Datasphere projects
- Comprehensive coaching material as well as on-site common workshops with IT and business departments
- Selected use cases that are implemented directly, live, together and by DMK employees



Benefits

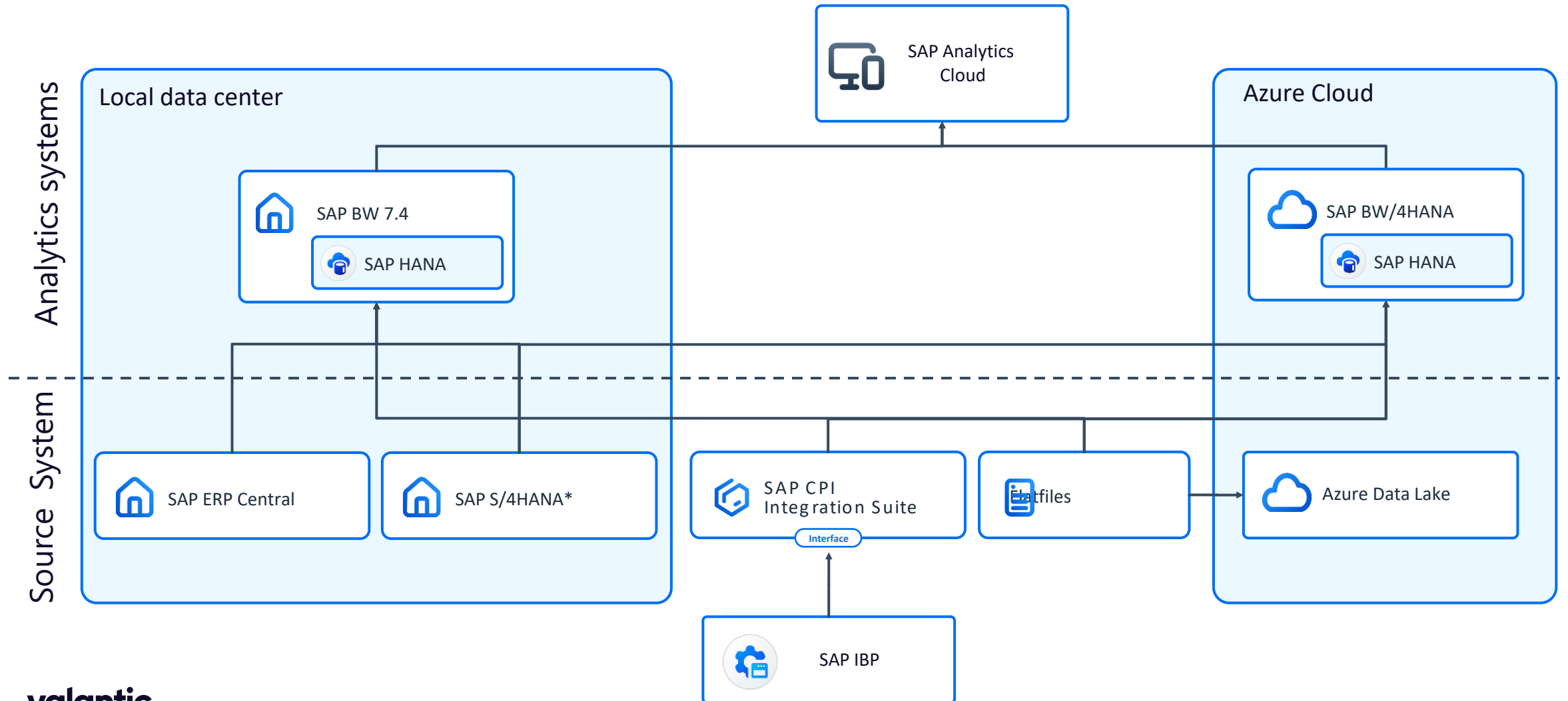
- Active learning, direct usage and implementation of use cases that can go "live" almost directly
- Joint action by IT and business department leads to consensus, clarity and common goals at an early stage
- Early knowledge and own experience lead to better decisions, clear priorities and valid estimations for upcoming tasks



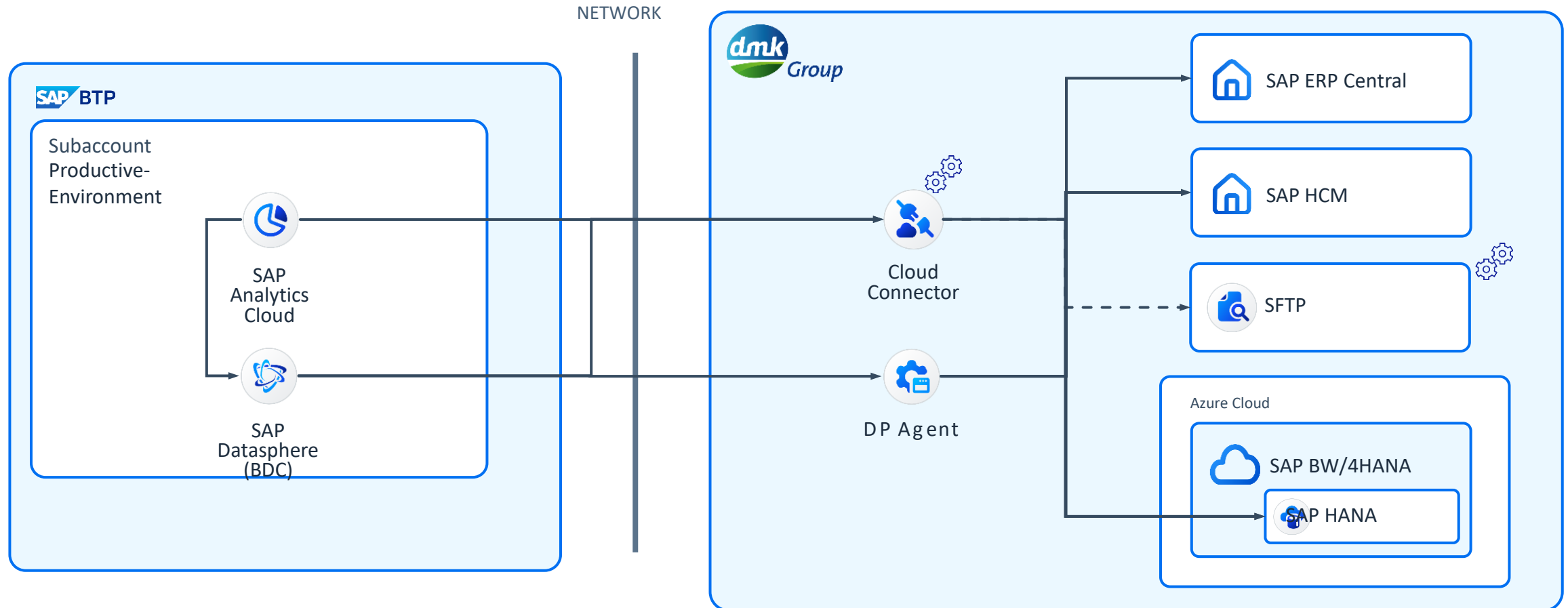
Facts & Figures

- Timeline: 10/2024 – 03/2025
- Invest: ~ 40 MD
- Tools: Datasphere
- Publication: [valantic Roadshow](#), [DSAG TT 2025](#)
- Contact: Mr. Wellmann, IT

Starting position for PoC



Architecture Today



Legend
 → Data request

This diagram shows the current architecture for SAP Datasphere. It shows a high-level picture of all used connections and systems in the productive environment. A similar architecture was set up for the test environment.

REFERENCE

Transforming the Analytics Landscape



Challenges

- Operational reporting with SAC on S/4 is limited
- IBM Cognos Data Warehouse is poorly integrated, requires manual effort, and lacks data spaces and metrics
- Relatively small IT
- Stronger focus on cloud technologies



Critical Success Factors

- valantic Project Methodology | Parallelism of old and new systems with productive data, i.e. min. test effort on the part of the customer
- Modular tasks + short decision-making processes = short development cycles & fast results
- Commitment of all project participants



Benefits

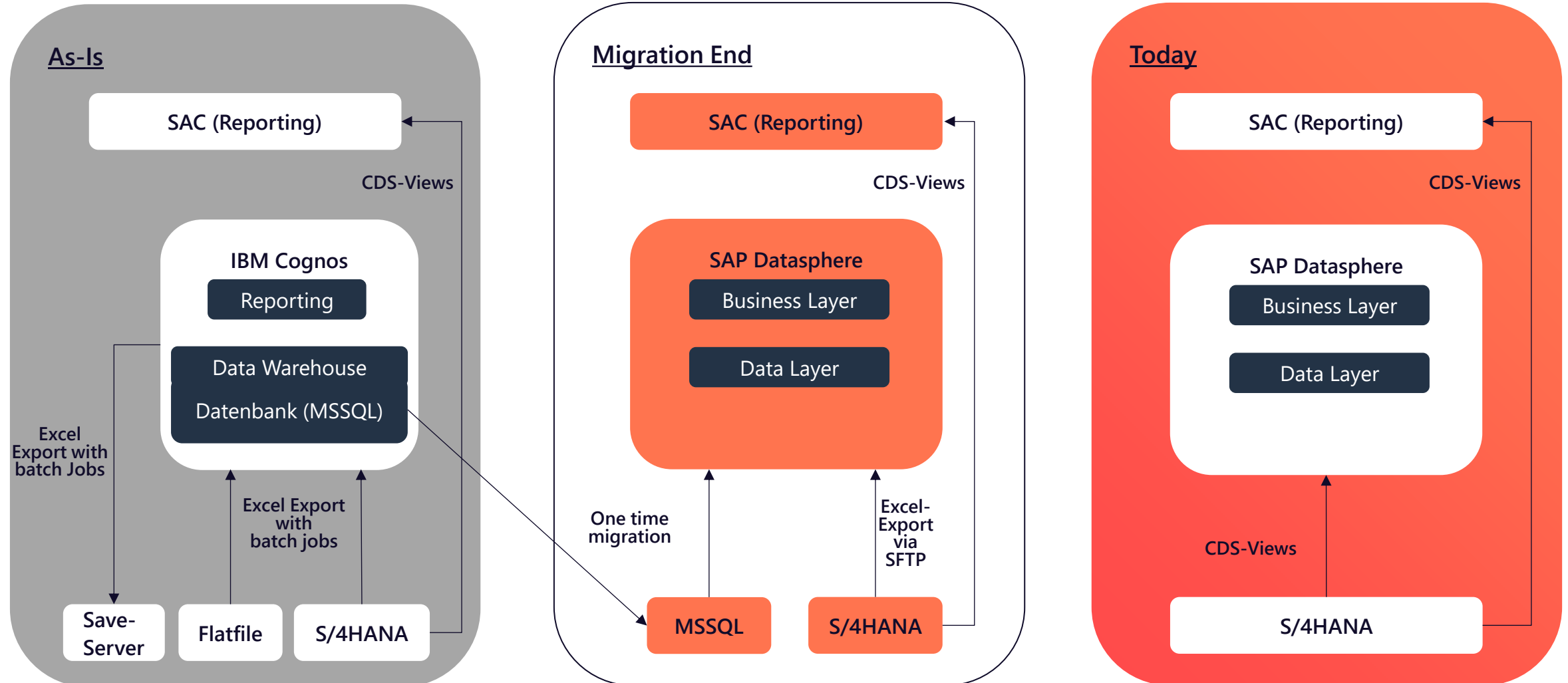
- Data Warehouse replacement within 3 months
- Flexible architecture, few but automated data loading, highly integrative data models
- Low maintenance costs in IT
- AI-supported processes for sales orders, supplier confirmations, etc. through S/4HANA, Datasphere and AI services in the BTP



Facts & Figures

- Timeline: 11/2023 – 03/2025
- Invest: ~ 250 MD
- Tools: S/4, Datasphere, Analytics Cloud, BTP
- Publication: [Success Story](#), [DSAG TT 2024](#), [BTP Summit 2025](#)
- Contact: Mr. Martensen, IT

Architecture



Requirements for the AI use case

1

Incoming emails from customers are to be analyzed

The e-mails are requests for ordering materials

3

The recognition of the data is to take place taking into account the data of the S/4HANA

2

The following data should be derived from the e-mail:

- Business Partner
- Material / Sales Order Items

4

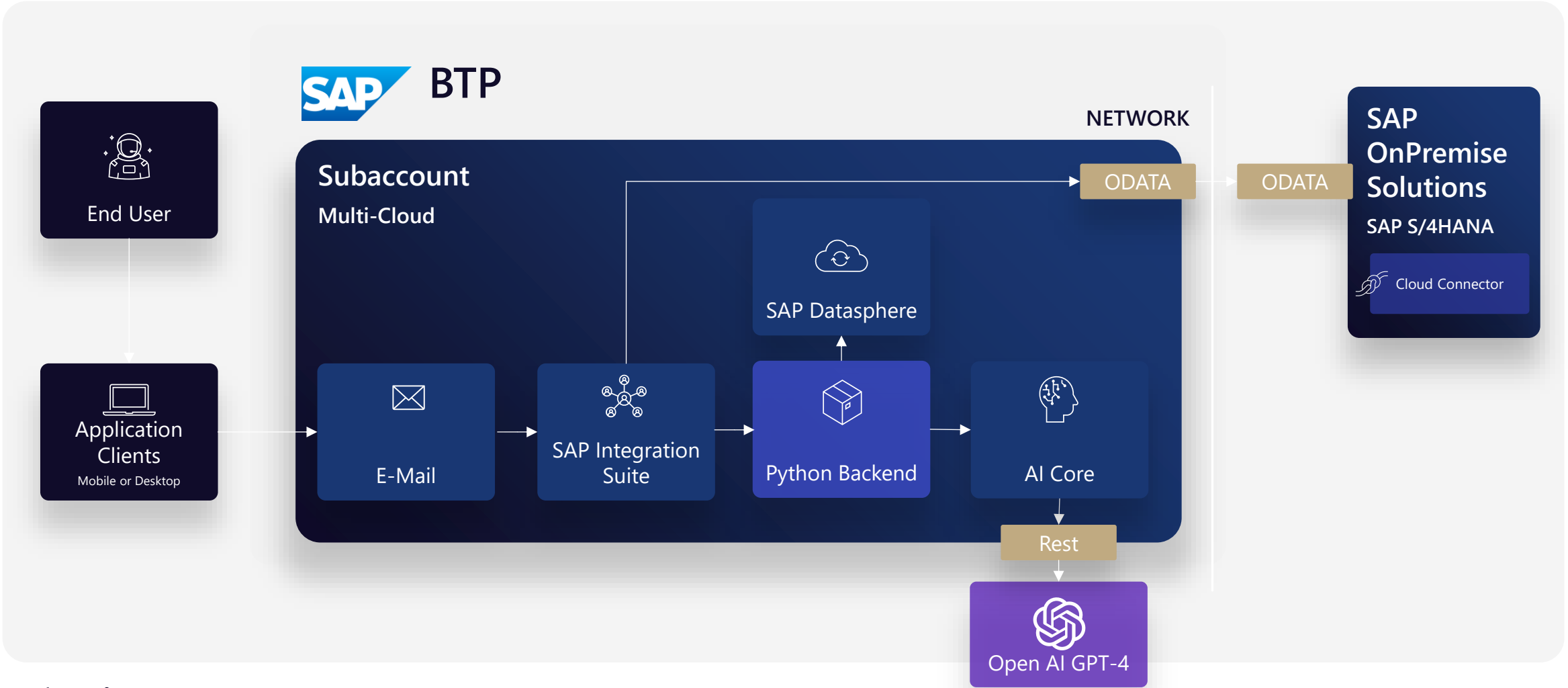
Subsequently, offers are to be automatically created in the ERP system



The diagram illustrates a three-tiered integration model. At the top is the SAP BTP logo. Below it is the GPT 4o logo, which is a black knot-like icon with the text 'GPT 4o' underneath. At the bottom is a red outline icon of a human head with a brain inside, with the text 'Business Expertise' below it. Two large red chevrons point outwards from the center, flanking the GPT 4o logo.

[illegible]

Architektur



Ready when you are !

Marcel Beckmann

SAP Analytics Manager | CoE DWH
marcel.beckmann@ba.valantic.com



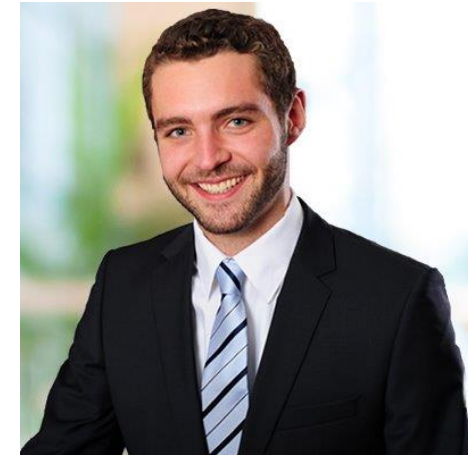
Stefan Blinkmann

Head of SAP Analytics
stefan.blinkmann@ba.valantic.com



Manuel Essers

SAP Analytics Manager | CoE xP&A
manuel.essers@ba.valantic.com



Special Offer until this Friday 18:00 → 4 hours remote BDC workshop

Just connect with us on linkedin and post something like ... „I am looking forward to a BDC remote workshop with valantic.
Greetings from Norway”