



# SAP archiving in the cloud at Kemira.

**Experience from a successful project  
with kgs tia®**

Heiko Berger  
Strategic Account Executive

# agenda

1. Introduction
2. tia<sup>®</sup> Content Server
3. tia<sup>®</sup> Migration / SAP S/4 HANA
4. Kemira Use Case
5. Q&A

# about kgs

- 25 years: Leading archiving solution specialist for documents and data out of SAP
- Legally compliant and audit proof archiving and migration solutions – Any Application, Any Storage
- Mission: High-performance & lean archiving solution with low complexity, short implementation times

# > 500

leading customers from all industries

BIRKENSTOCK

Nestlé



HILTI



FUJITSU



WarburtonS



Lufthansa




KÄRCHER

kemira

KNAUF



Capgemini



.. with a similar  
initial situation –  
kgs can assist  
with huge  
benefits.

# initial situations

- SAP-Systems & large DMS/ECM with focus on document/data archiving
- Replacement of: Opentext, SAP-Content Server, d.velop, Easy, IBM Filenet
- Project drivers:
  - High Licence expenses
  - Maintenance costs & complexity
  - Not used DMS/ECM functionality
  - SAP Rise and SAP S/4 HANA
- Project sizes: 0.5 TB to 400 TB

# 2

tia<sup>®</sup> Content  
Server



# tia<sup>®</sup> Content Server

Puristic archiving,  
50% Cost reduction

**Simplification of the ECM/DMS  
environment**

Deep SAP integration  
skill for 25 years

**World's first certified  
ArchiveLink<sup>®</sup>, SAP BC-ILM and  
CMIS archive**

SAP-Interface as  
User-Interface

**Content Server as middleware  
no additional App or Interface**

Cloud-native,  
S/4 HANA Ready

**On-Premise, Cloud, Hybrid**

Container-Technology

**Kubernetes as a "cloud  
operating system"**

High level of  
automation &  
Scalability

**Reduced resources and costs**

# tia<sup>®</sup> Content Server

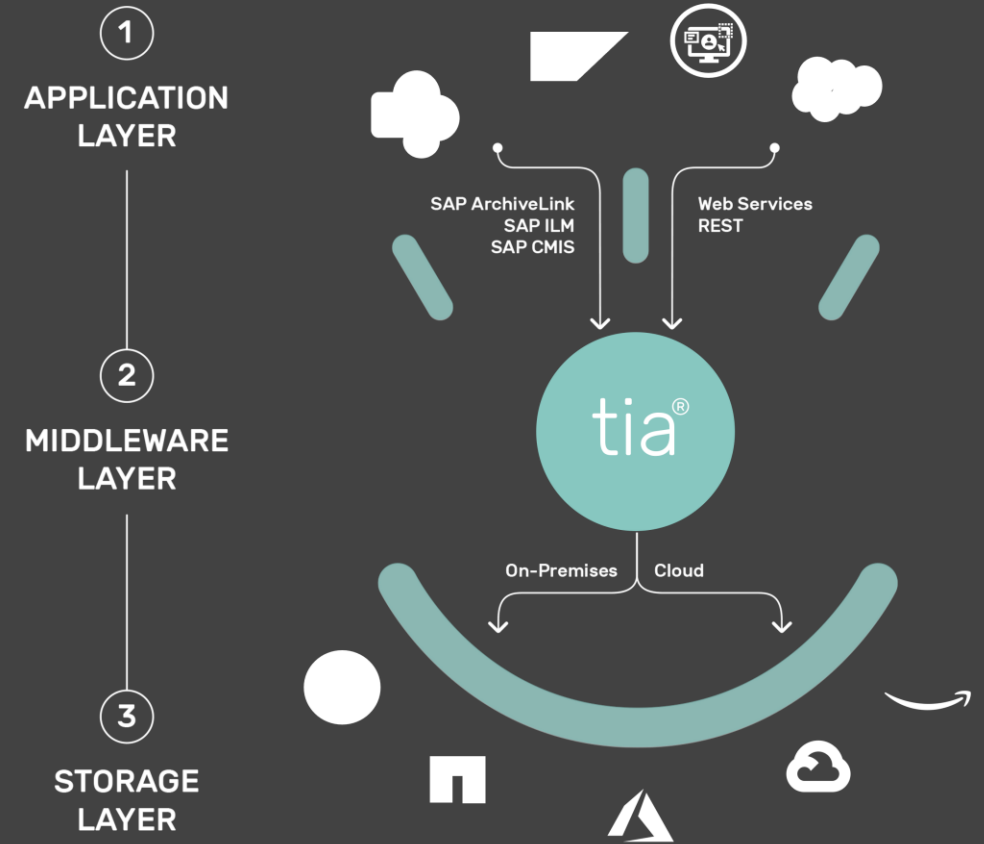
Cloud native high performance Archive for SAP

## Capability Overview

- Universal platform-independent high performance archiving solution
- Audit proof and legally compliant document/data archiving and archiving of print lists
- Support of ArchiveLink<sup>®</sup>, ILM and CMIS

## 3-layer middleware model

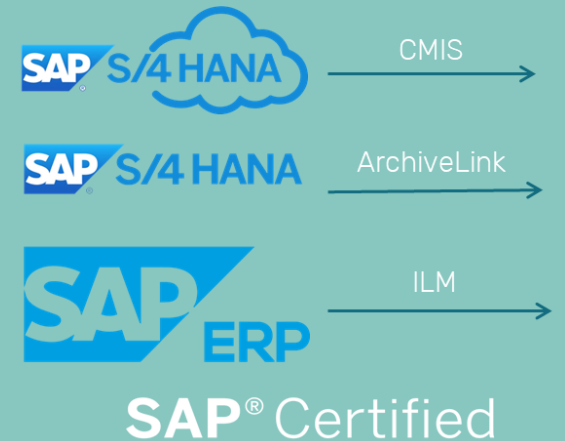
- Fully integrated in SAP, documents are linked to e.g. SAP transactions, workflows or processes
- Full access to Any Storages or Application



# tia<sup>®</sup> Content Server

## Summary

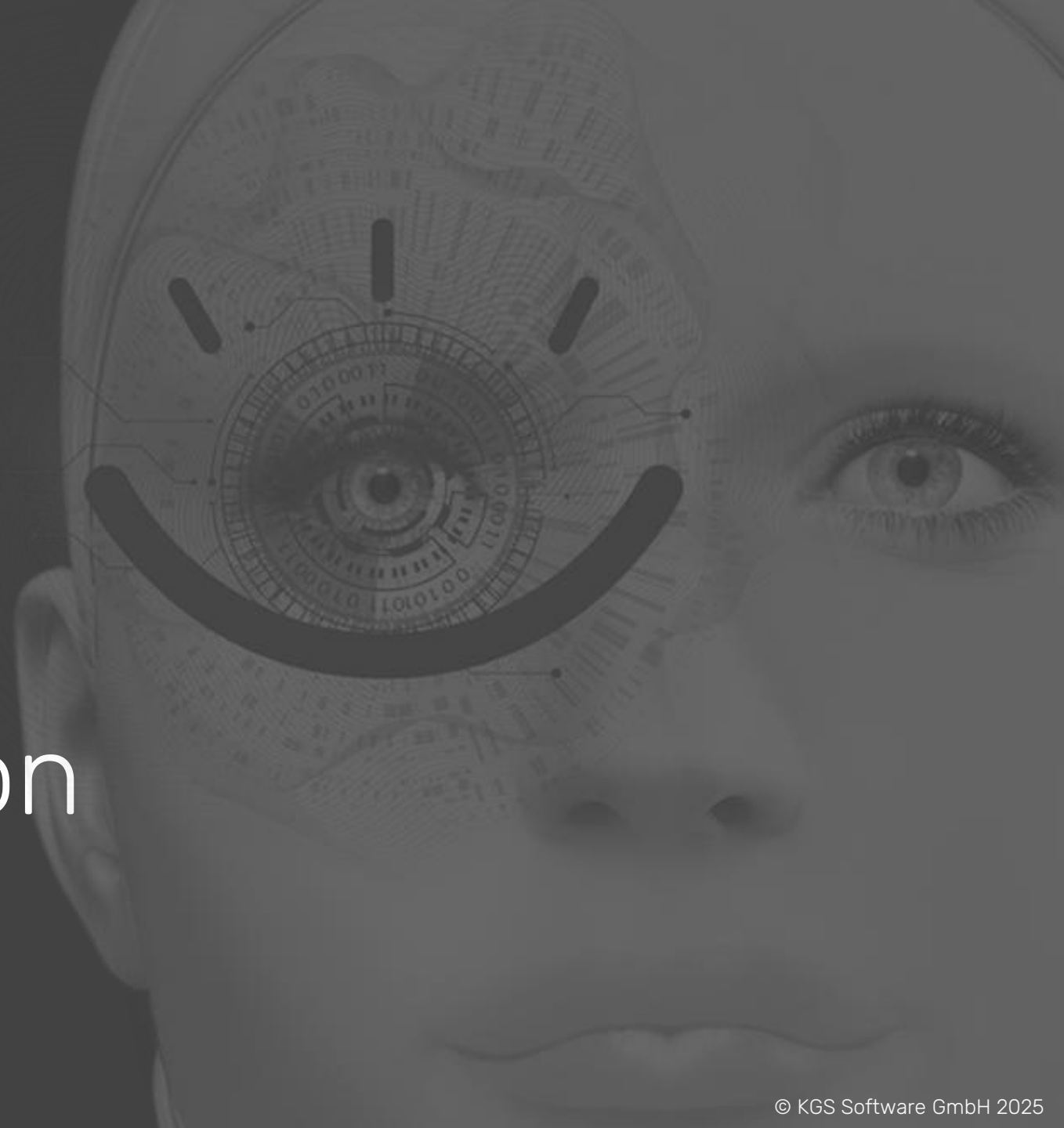
- Archiving integrated into SAP Interface, no additional user interface
- Full use of SAP functions e.g. authorization concept
- No redundant and often not used features of large ECM/DM systems
- Document/data storage on filesystem basis, no licenses or DB maintenance needed
- Minimal installation in days and low maintenance effort leading to significant cost savings





# 3

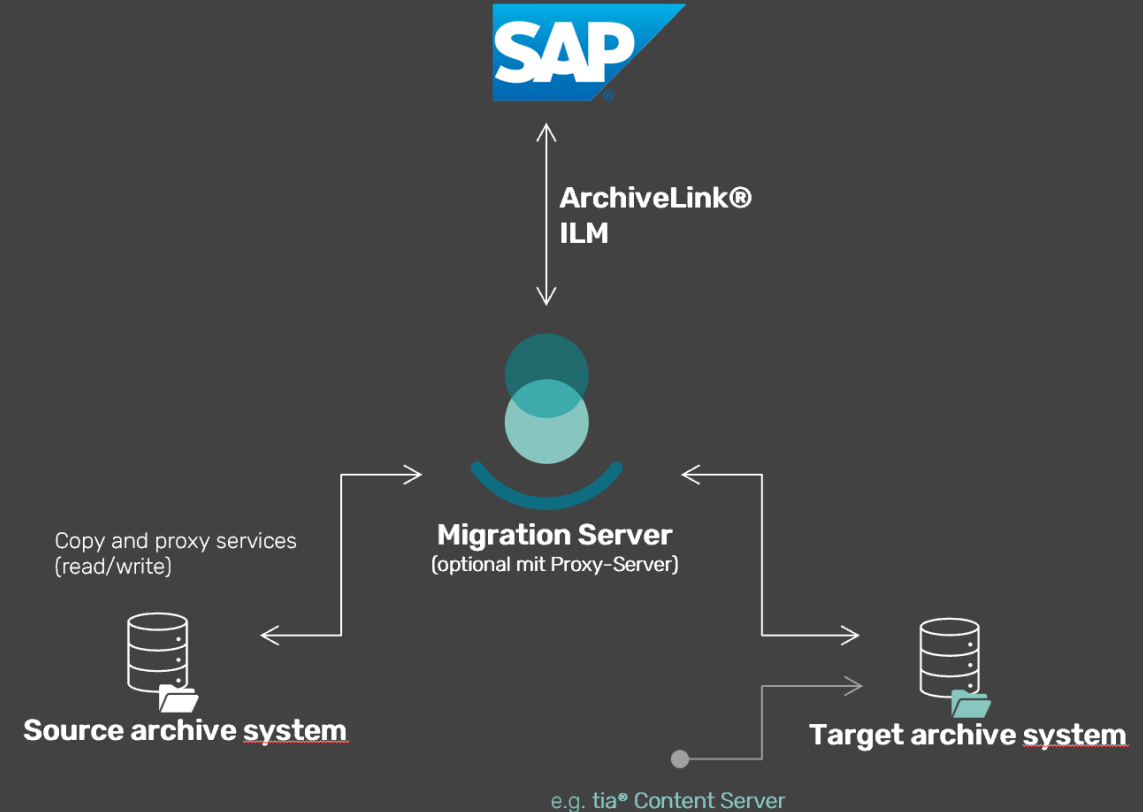
## tia<sup>®</sup> Migration & S/4HANA



# tia<sup>®</sup> Migration

## Unique Migration Capabilities

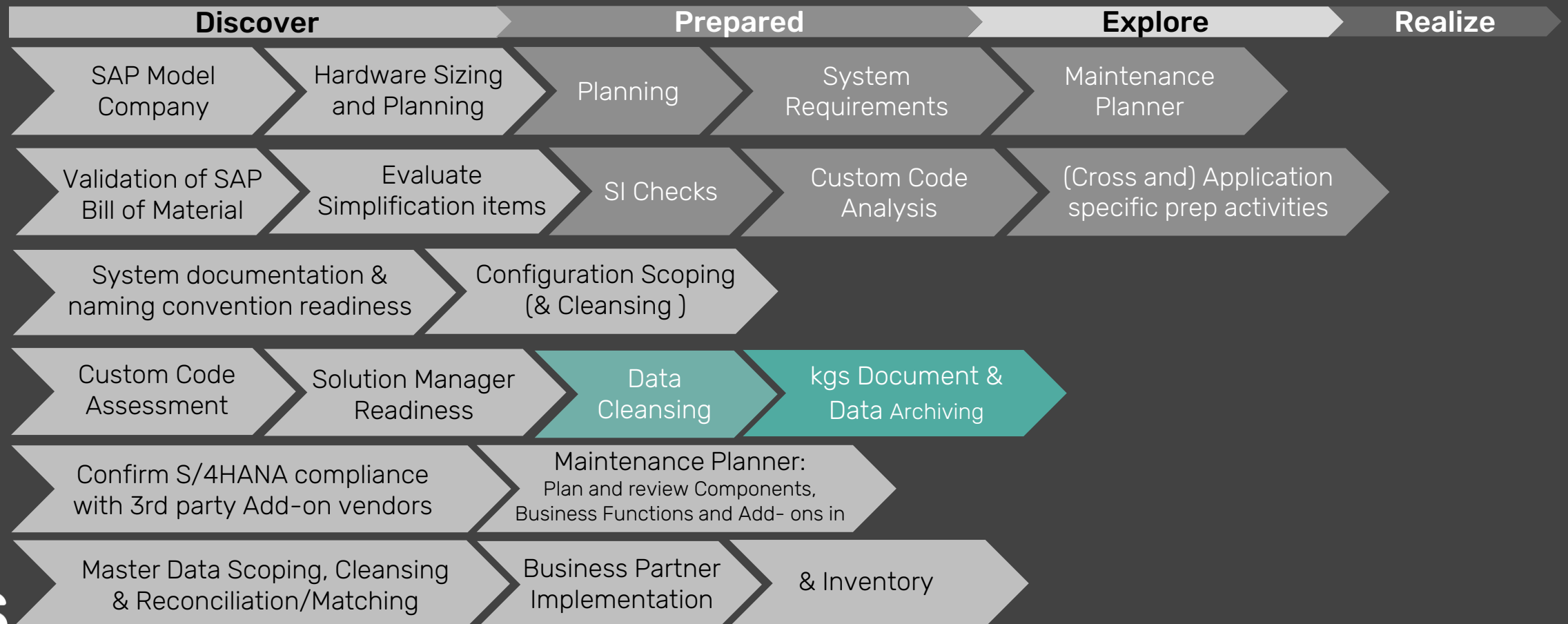
- Migration without any user disruption
- Access to all documents throughout whole migration (proxy server)
- Audit proof control of migration process
- Fully automated documentation of migration ensures conformity to generally accepted accounting principles
- Compatible with all SAP ArchiveLink<sup>®</sup> and CMIS certified ECM/DMS
- Proactive monitoring with e-mail notification of errors



# tia<sup>®</sup> and S/4HANA

Example: kgs Data Migration and Archiving as part of the S/4 HANA preparation phase

## Activities for Conversion



# archiving with tia<sup>®</sup>

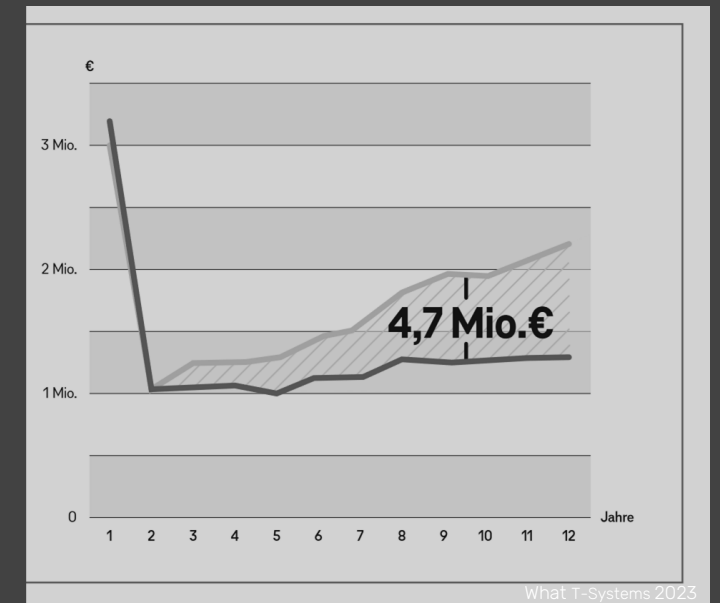
Archiving with kgs will unlock huge savings on every S/4HANA Program

## S/4 HANA Setup Example - 1,000 SAP users

- Data Cleansing: 38% of the initial database size of 2 TB can be archived immediately
- Yearly data growth of a SAP system falls from 15 to 5% with archiving

## Results achieved through archiving

- Over a term of 12 years S/4HANA with archiving will be up to 4.7 million € cheaper
- Reduction in the S/4HANA license & maintenance costs
- Lower memory costs and Cloud infrastructure
- ROI in 2-3 years



# archiving with tia<sup>®</sup>

Universal high performance archive for SAP ERP, SAP S/4, Any Application and Content

## tia<sup>®</sup> Content Server

- Cloud native Container technology
- Kubernetes
- On premise/On public cloud
- Subscription pricing and service model

## tia<sup>®</sup> Migration

- Audit proof migration tool
- Transparent procedure
- High performance and system load adaptable
- Suitable for all ArchiveLink<sup>®</sup> and CMIS based ECM/DMS systems

## tia<sup>®</sup> SharePoint Connect

- Documents from SharePoint can be archived
- User authentication, authorization and security settings

## tia<sup>®</sup> Zadoc

- SAP Add-On to support non-SAP - Documents in SAP
- Additional ECM-/DMS features
- Extension of ArchiveLink<sup>®</sup> functionality

## tia<sup>®</sup> Document Router

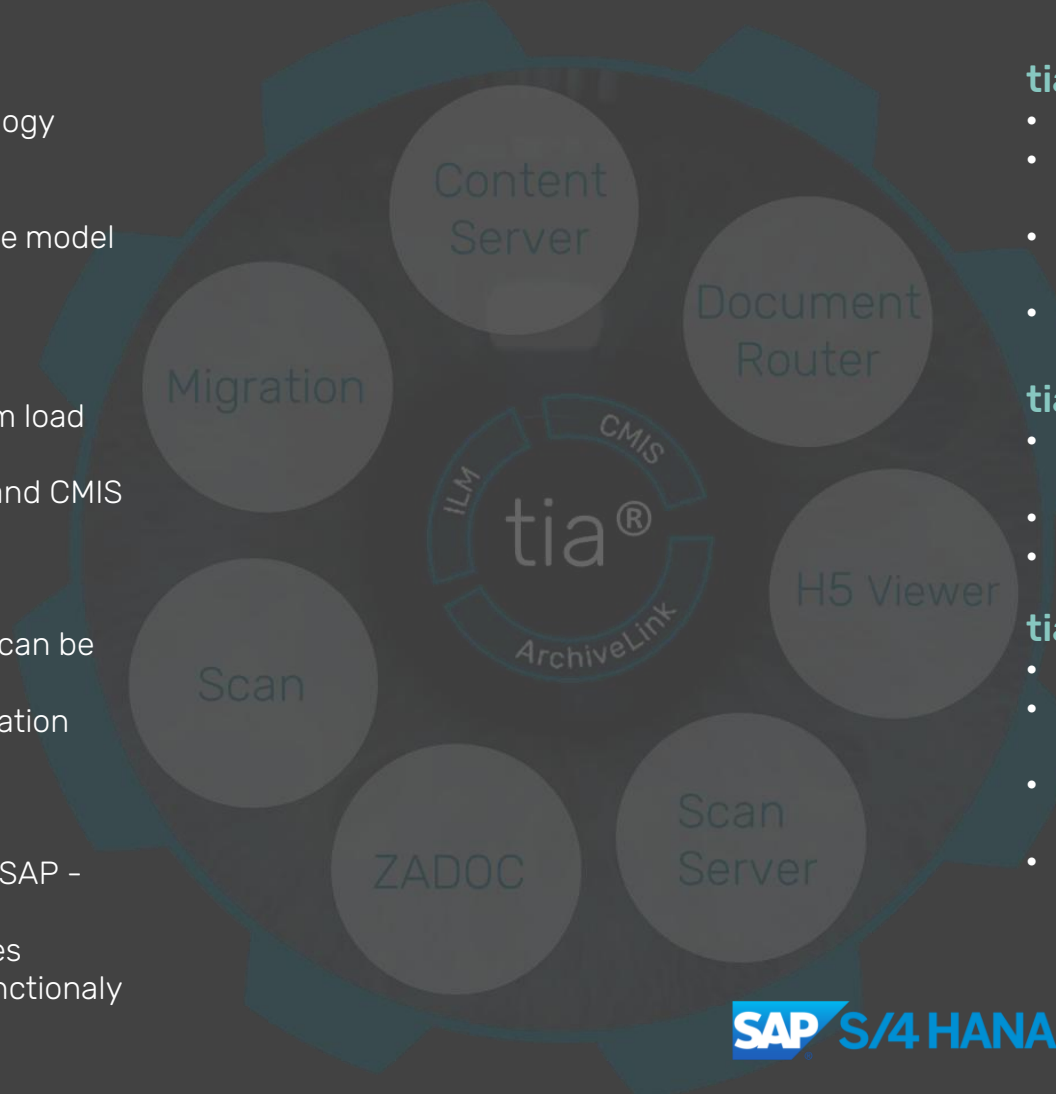
- Universal input manager
- Support of Scan-, Fax-, E-Mail-, Filesystem,
- External Output Management of Legacy Systems
- SAP ArchiveLink<sup>®</sup> certified

## tia<sup>®</sup> H5 Viewer

- Application for displaying PDF and image documents
- Web browser based
- With annotation functions

## tia<sup>®</sup> Scan Server

- High-performance client scan
- Direct control and archiving of scanned documents
- Supports incoming mail scenarios from SAP
- Mass scan with automatic barcode recognition



# 4 Kemira use case



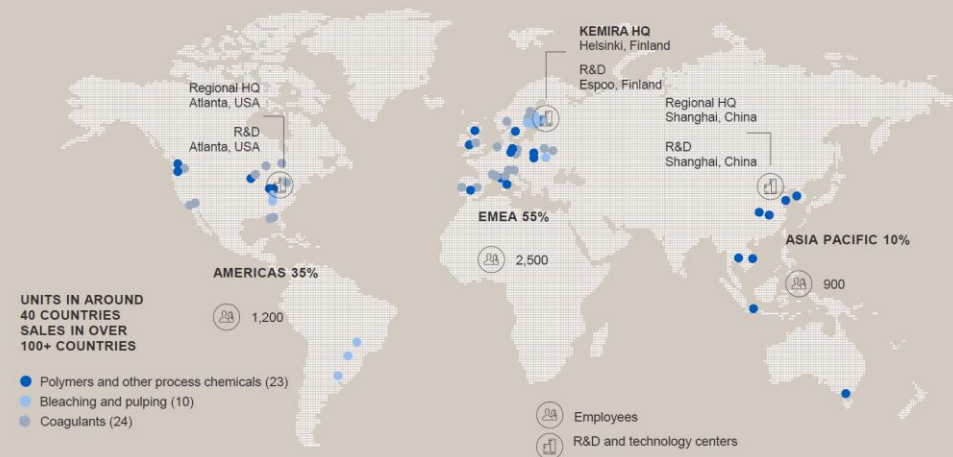
# about Kemira

- Leading global supplier of sustainable chemical products
- Focus: Pulp & paper, water treatment, energy
- 2022 Annual Sales: ~€3.6 billion.
- Operative EBITAD ~€670 million / 19.7% Op margin
- > 5,000 employees worldwide.
- 57 Manufacturing sites globally

# Kemira

## Global reach – local excellence

57 MANUFACTURING SITES



kemira FEBRUARY 9, 2024 INVESTOR PRESENTATION

# Kemiras S/4HANA transformation

Trigger for a cloud native archive

## Initial Situation

- Parallel to the global S/4 Move, the archive needed a update
- Existing solution “CommVault” was not matching S/4 HANA needs
- CommVault was lacking Cloud capability for Azure storage account
- Response time and support quality were suboptimal



## Kemiras Objectives

- S/4HANA & Azure Cloud store account readiness
- Significant savings on license costs
- Audit-proof compliance
- Fast document retrieval
- Low implementation/maintenance costs
- Migration without user interruption
- One global archive for all locations



.. in search for the right partner Kemira interviews Lufthansa Group.



**Lufthansa**

## before

- Cost-intensive OpenText archive
- Inflexible pricing model
- Complex, maintenance-intensive architecture
- No scalability



## after

- Significant cost savings
- Flexible pricing model with tiered pricing based on data volume
- Lean, low-maintenance architecture
- Scalability and flexibility through subscription model



**Lufthansa**

” The subscription principle not only offers us a **high degree of flexibility**, but also attractive graduation and **scalability**, allowing us to benefit from lower prices for larger purchase quantities.



**Alexander Frick**

Director Operational Procurement  
Lufthansa Group

3 days!

.. the POC  
installation was  
later used as test  
environment.

## start: lean POC

- Providing requirements for virtual machine(s), e.g. cpu, memory, disk space, operating system and Azure Blob
- Installation/configuration of test archive system (tia®)
- Installation and configuration of migration tool
- Migration test CommVault to tia® system up to 50 GB
- S/4 test – Write and Read from S/4 system to tia®, e.g. VIM invoice images
- One Approval app testing – getting invoice image from tia® to One Approval app
- Documenting PoC results

# implementation

## Basics

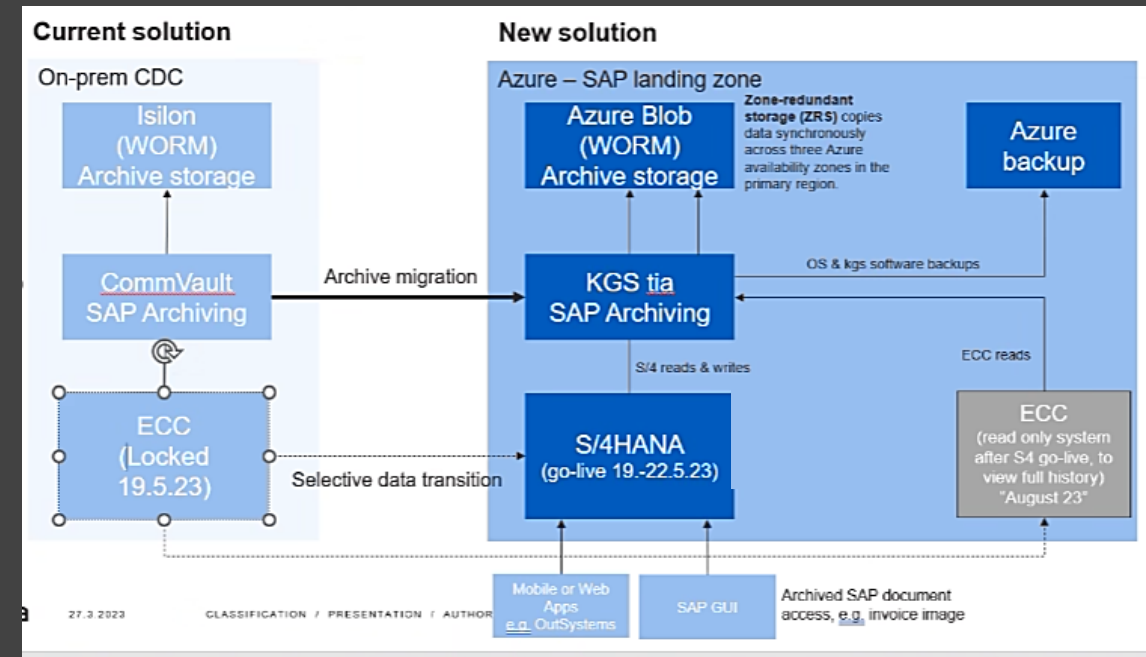
### key requirements

- Designed for globally ~5000 Users
- Migration of 38 million documents
- 3 TB of data (invoices/logistics critical)
- Business continuity during migration

### kgs lean project approach

- POC: 3 days
- Setup tia<sup>®</sup> Content Server: 3 days
- Setup Migration: 2 days
- Migration Execution: 4 days
- PM & Documentation: 1 day

13 days!



# fast-track

Implementation after 3 month

Winter 2022

Decision  
for kgs

January 2023

Proof of Concept  
(PoC)

March 2023

Project  
Kick-Off

May 2023

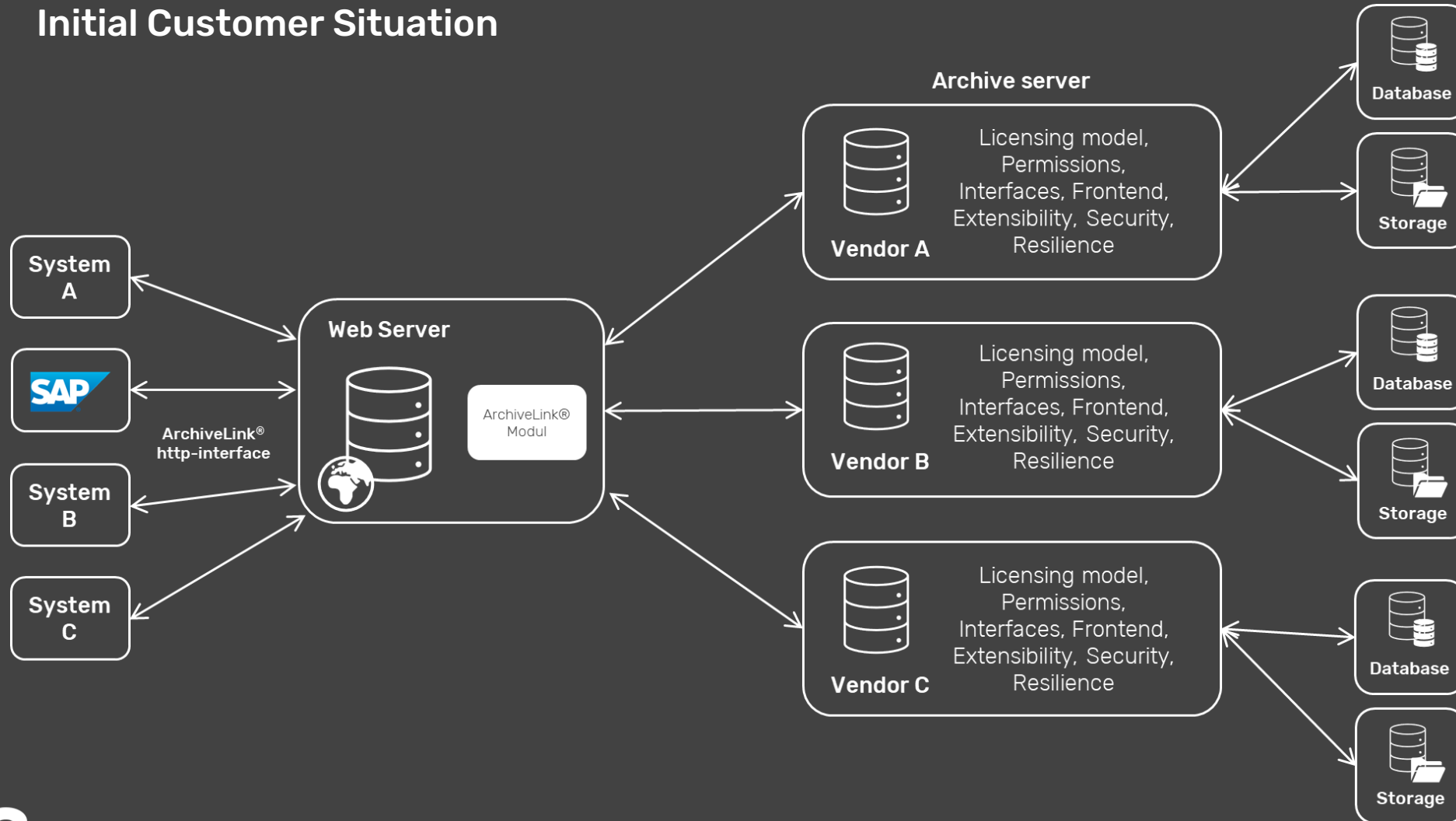
Migration  
completed

## Challenges

- Being part of a larger global S/4 HANA Transformation Team
- Participation on Big Bang weekend
- Integrated in in large global Big Bang Go Live Team
- Speed & performance of migration

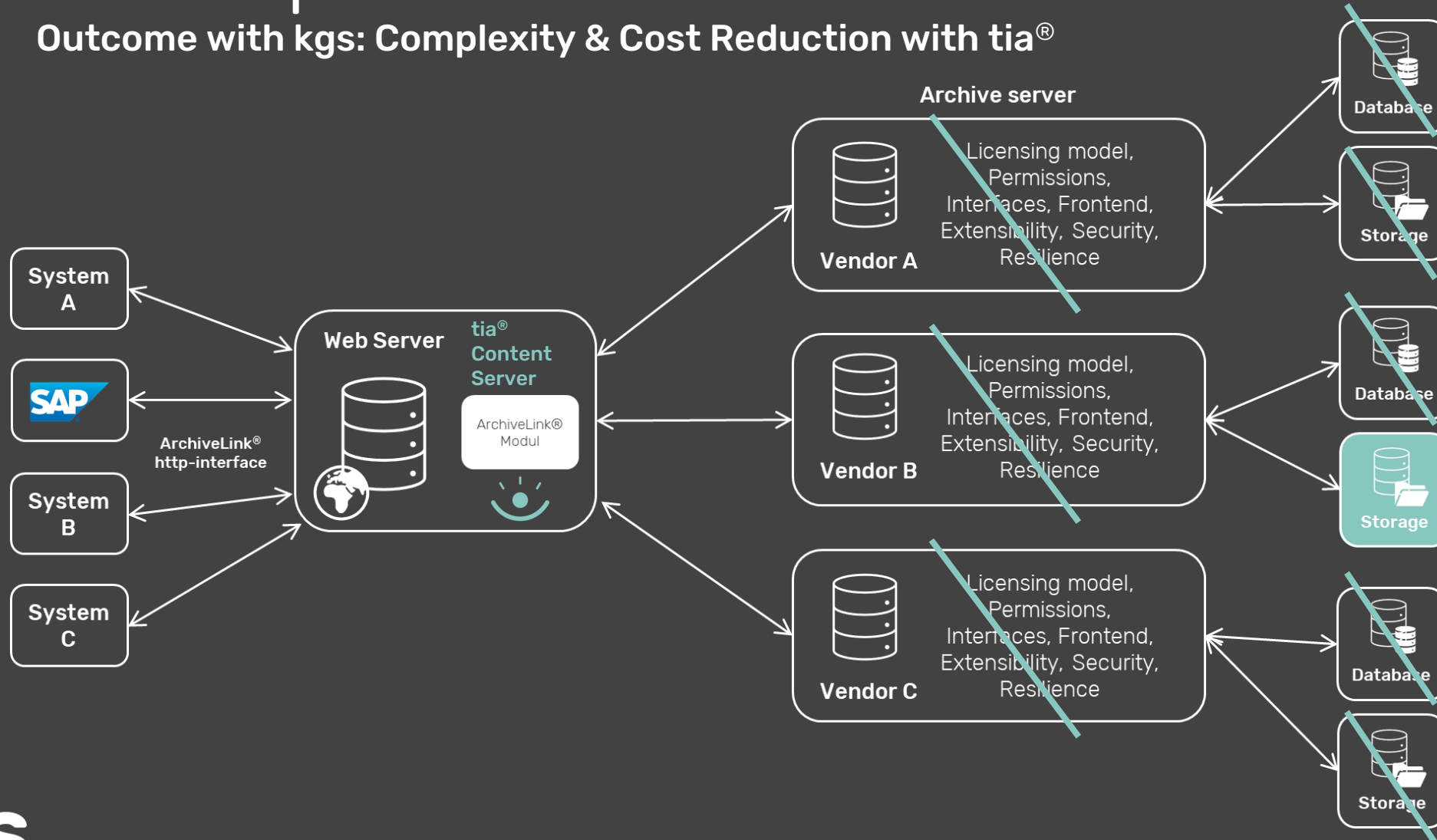
# example

## Initial Customer Situation



# example

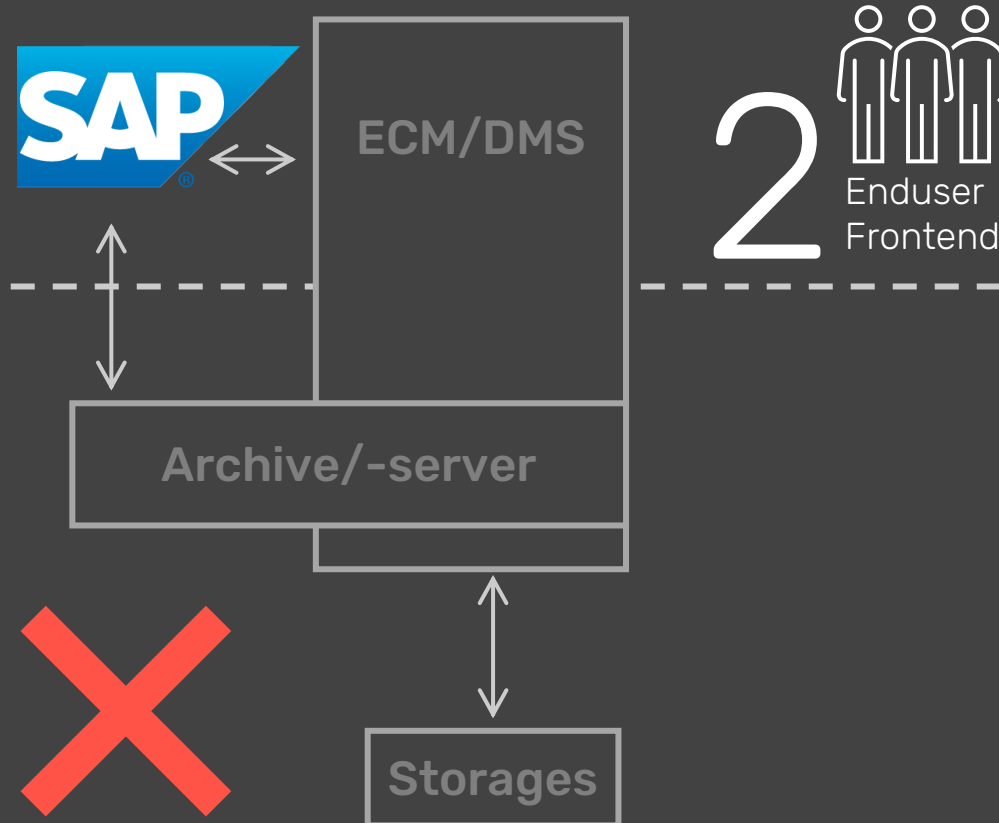
Outcome with kgs: Complexity & Cost Reduction with tia®



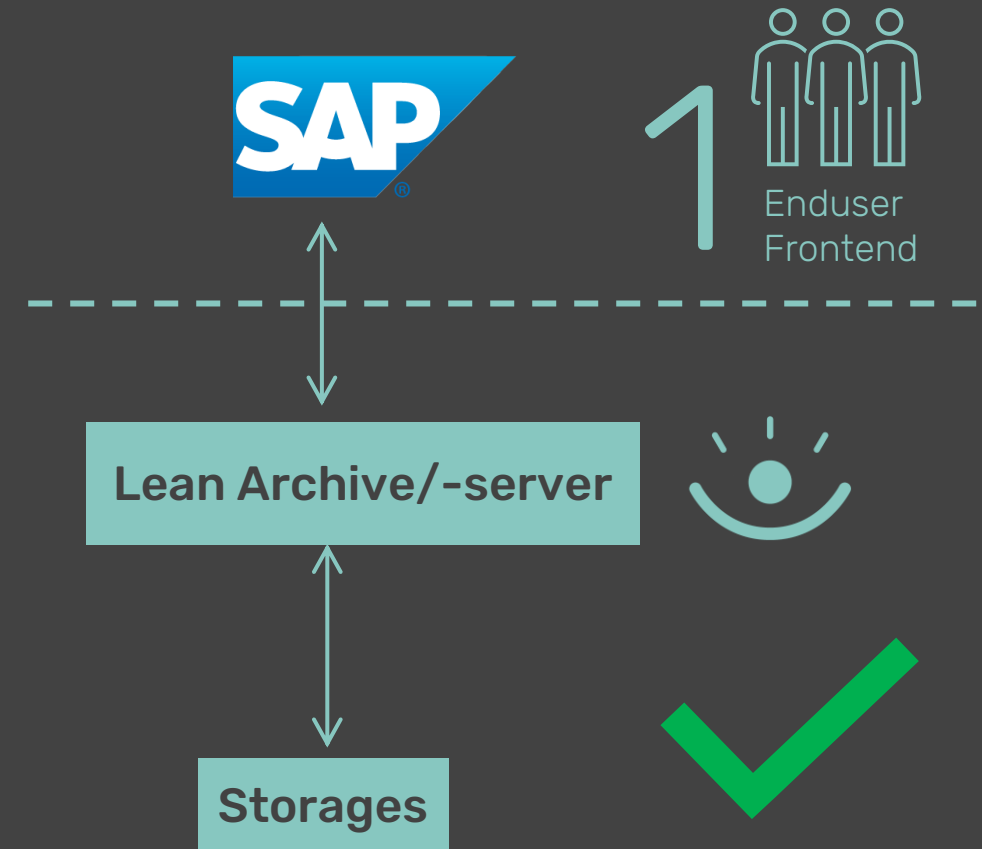
# outcome

Lean archiving with tia<sup>®</sup>

ECM:



tia<sup>®</sup>:





# example: SAP GUI

## With integrated kgs Archiving document view

Content Repository

Edit

Goto

Environment

System

Help

<

SAP

Display Content Repositories: Detail

✓

<

>

Full administration

Cancel

Content Rep.

T1

Active

154 / 167

Description

tia Content Server

Document Area

ARCHLINK ArchiveLink

Storage type

04 HTTP content server

Protocol

KGS1

🔧

📄

✉️

➔ CS Admin

Version no.

0047

Content Server Version 4.7

HTTP server

sape75

Port Number

8080

SSL Port Number

HTTP Script

tiaCSAL3133/contentserver

Transfer drctry

D:\usr\sap\EC3\SYSGlobal\

Phys. path

D:\usr\sap\EC3\SYSGlobal\

Output Device

ARCH

Server status

running

Description

Vendor

KGS Software GmbH

Version

not provided

Build

tia® Content Server core SAPHTTP

pVersion

0047

Server time

10.06.2025 11:30:16

Contrep status

running

Description



**SAP**

## Display Document: Data Entry View

> E75 (1) 800

---

✓ [ ] Taxes Display Currency General Ledger View Cancel

---

### Data Entry View

Document Number	100000001	Company Code	1000	Fiscal Year	2005
Document Date	31.01.2005	Posting Date	31.01.2005	Period	1
Reference	0090034779	Cross-Comp.No.			
Currency	EUR	Texts exist	<input type="checkbox"/>	Ledger Group	

C.*	Item K.	St Account	Description
1000	1 01	1172	CBO Computer Based Des...
	2 50	800000	Sales revenues - dom
	3 50	175000	Output tax

**Service: Attachment list**

AttachmentFor10001000000012005

Icon	Title	CreatrName	Created On
	Billing document		05.07.2004

# results achieved

## Key Benefits for Kemira

Future-proof,  
cloud-based  
archiving  
solution

All departments  
archive documents on the  
kgs platform

SAP as usual;  
archiving  
seamless in the  
background

Cost Savings:  
Efficient  
Implementation  
& Operation

High  
Performance:  
Quick and easy  
document  
access

Compliance:  
Critical legal  
archiving  
obligations

Migration  
without any  
user disruption

”The collaboration was **very good and professional** throughout the entire project. We were particularly impressed by the **expertise** of the kgs consultants,”

**Johanna Pakkanen**  
Senior IT Manager at Kemira

A grayscale background image featuring a woman's face, with a large, semi-transparent clock face overlaid on the right side.

To make a short story short:

Fast, easy, **cost-efficient**, stable  
– a legally **compliant and reliable**  
archiving solution  
for the next **10 years.**

# 5 Q&A



# why partnering with kgs

Join forces with **extrem successful market challenger** in the **SAP archiving space!**



kgs provides a fast, lean and audit proof fulfillment of legal and regulatory archiving requirements



Excellent system stability, high customer satisfaction, on average customers are working more than 12 years with kgs



Low complexity, fast implementation, minimum maintenance effort, high conversion rate of existing ECM/DMS solutions



tia® is cloud native and S/4 HANA ready, made for small projects to large global archiving transformation programs



Unique high performance, audit proof kgs migration tool, made for small and global enterprise archiving transformations



Up to 50% savings against larger competitors for our > 500 customers

# initial qualification assessment

**It would be helpful for a kgs sizing and pricing indication to outline the key requirements for the future archiving application, including:**

- ❑ Archiving migration volume (GB/TB)
- ❑ User size of your current SAP system\*
- ❑ Legacy systems in use and corresponding user count
- ❑ Expected future archiving volume (GB/TB)
- ❑ Number of planned users for the new solution
- ❑ Interfaces: Required (e.g., CMIS, ArchiveLink, ILM)
- ❑ Modules: Archiving components to be replaced
- ❑ Additional requirements, such as scanning, SharePoint archiving, etc.

\*kgs is not counting the amount of users for licencing.  
licensing is applied per GB/TB archiving volume / System ID including Pro, Dev, Test