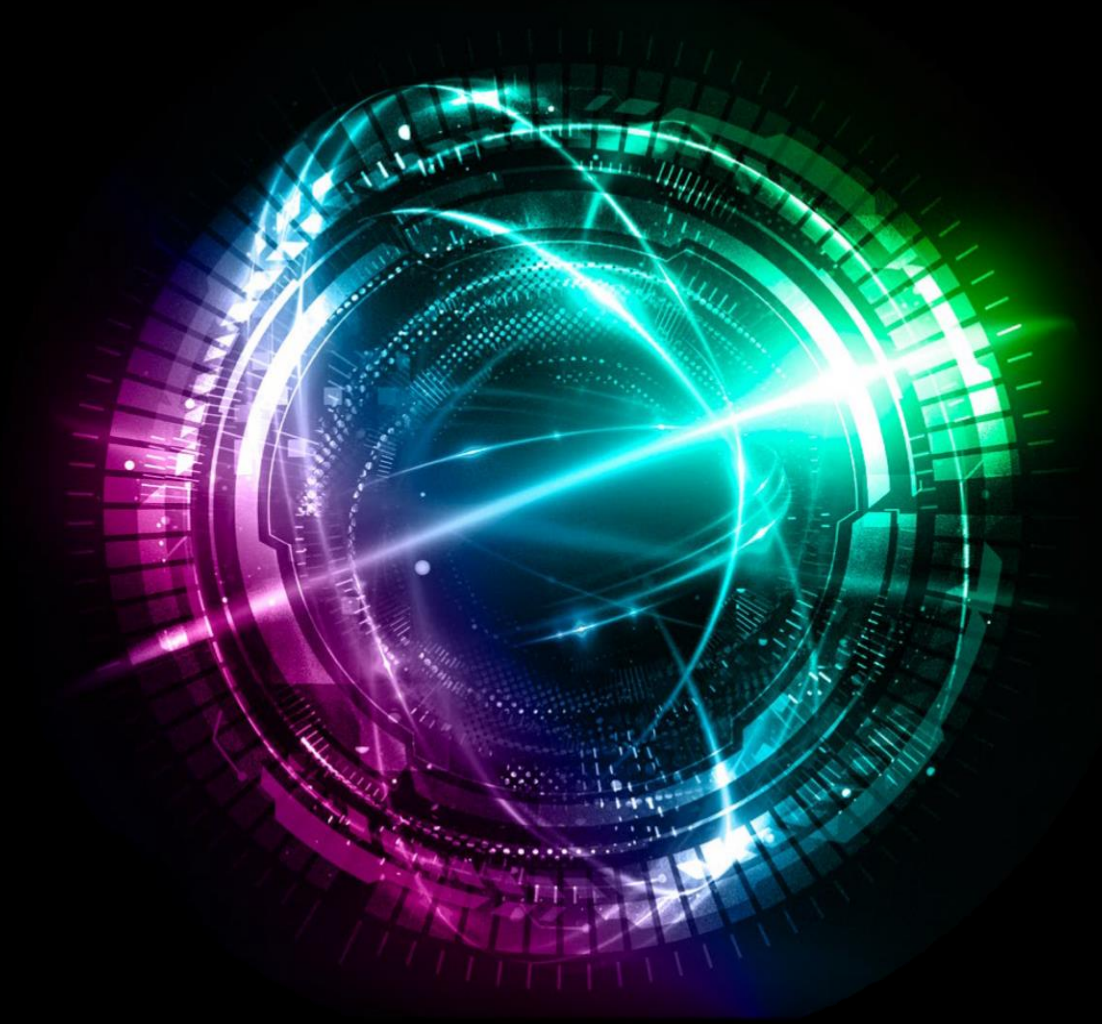




Deloitte.

informatiQ



Kinetic Offshore Logistics

SBN Energy Day
8th of March 2023

The team

Five members of our team are represented today



Erik Andresen

SAP Offering Lead,
Deloitte



Amit Jha

SAP Supply Chain Lead,
Deloitte



Veronika Gulsett

SAP Supply Chain,
Deloitte



André Nilsen

EVP,
InformatiQ



Anders Langøy

Manager Visual Supply,
InformatiQ

Agenda

1

Presentation of Kinetic Offshore Logistics



Why KOL?



What is KOL?



How is KOL set up?

?

Clarifications

2

Demonstration of two scenarios

?

Questions

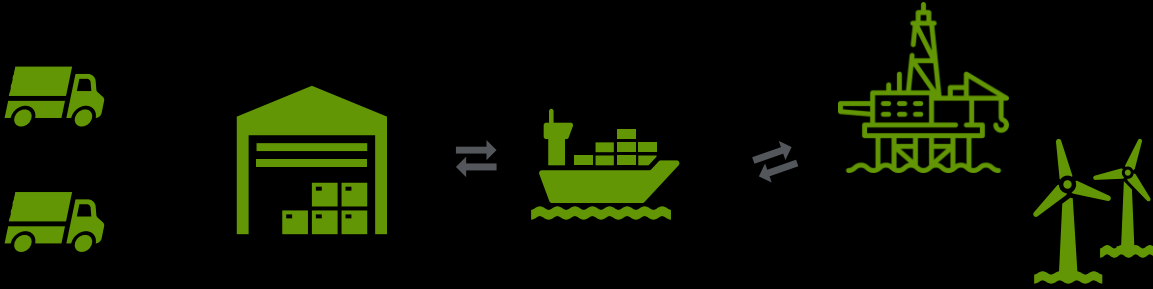
3

Wrap-up



Why

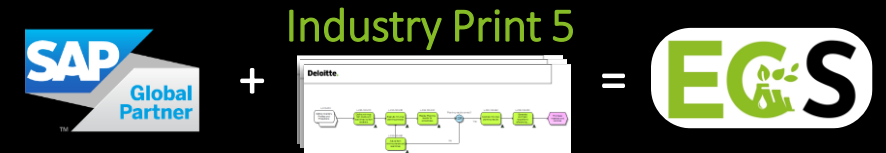
It is a gap between best of breed technology and the solutions available and validated for offshore logistics in the energy sector



Challenges related to the system landscape for logistics processes in the upstream value chain:

- SAP Remote Logistics Management (RLM) is phasing out
- A fragmented solution landscape across business units
- Logistics personnel have different user interfaces for similar processes
- Cumbersome reversal processes of digital footprint when plans are changed

Deloitte.



&

informatiQ logistiQ

What

We are combining the power of SAP with the flexibility of LogistiQ to create an integrated and user-friendly solution for offshore logistics – named Kinetic Offshore Logistics

The Kinetic Offshore Logistics Solution (KOL)



Visibility across business units and all parties involved

Seamless information flow

Real time track and trace

Auto cargo packages from vendor

Developed in close collaboration with the industry

Aligned with SAP and their roadmap for field logistics

What

The current scope is to design, document, build and test an offshore logistics solution for operations and maintenance, at the same time as design decisions have taken the full energy sector into consideration



Solution Scope

Kinetic Offshore Logistics (KOL) will, in prioritized order, cover:

1. Operation and Maintenance
 - Order Fulfilment for Offshore
 - Order Return from Offshore
 - Rental Equipment for Offshore



Roadmap

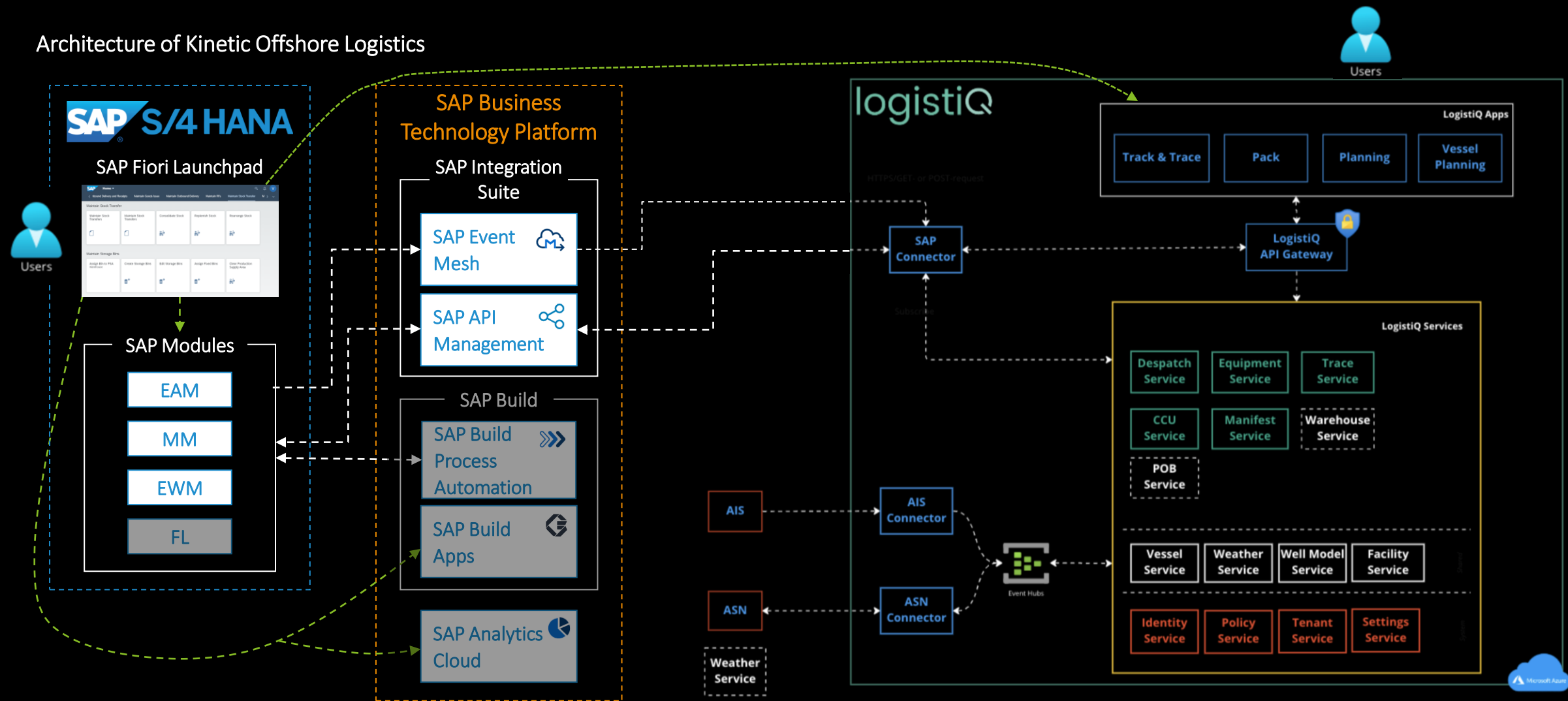
The upcoming scope of KOL is to cover:

1. Drilling and Wells
2. Assembly and Installation of Windmills
3. Kitting process
4. Use of Field Logistics, so we are compliant with the SAP roadmap

How

End-users accessing both the SAP and LogistiQ apps through the Fiori Launchpad, while the data is flowing between the systems through SAP Integration Suite on SAP BTP

Architecture of Kinetic Offshore Logistics

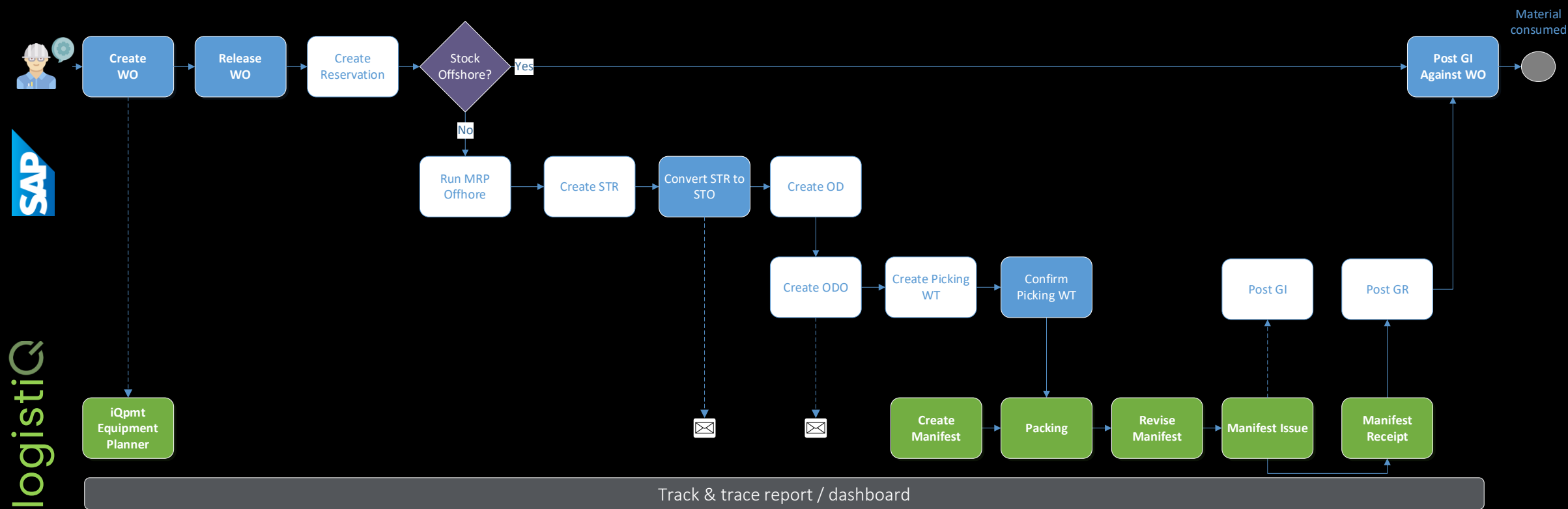


A hand-drawn illustration of a person with their arms raised, pointing towards a large speech bubble. The person is drawn with simple black lines. The speech bubble is also hand-drawn with a thick black border and contains the text "Any clarifications?".

Any clarifications?

Demonstration

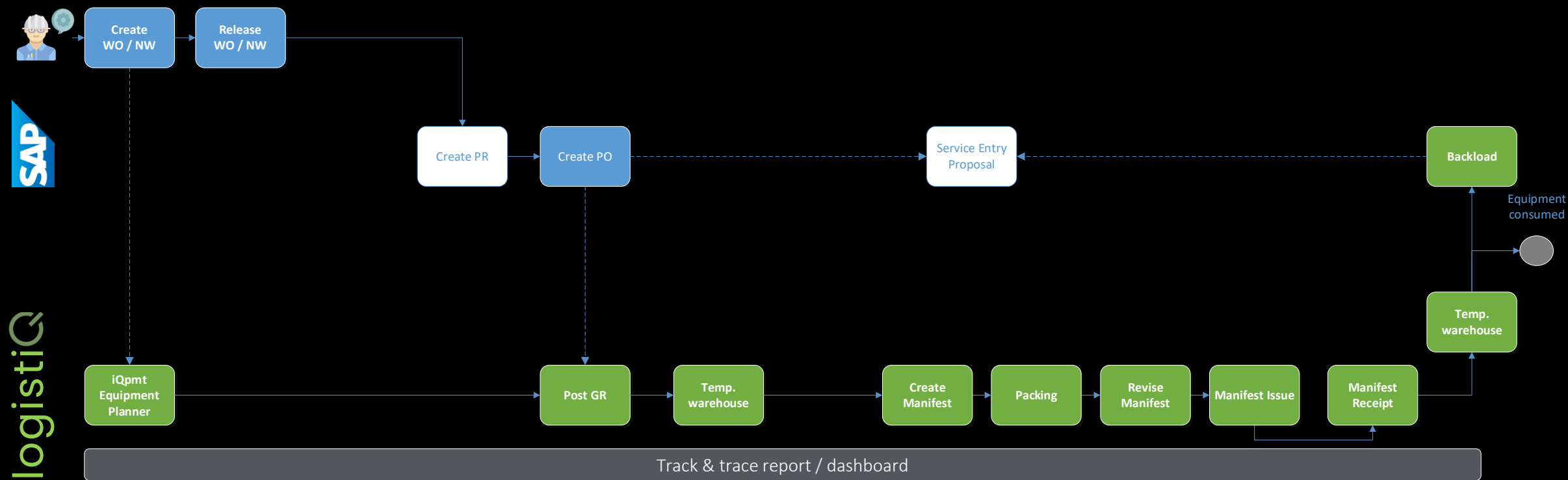
Scenario 1: Material stocked onshore is requested offshore (SP02 / SP12)



Manually in SAP Automated in SAP for this demo¹ Manually in LogistiQ

Demonstration

Scenario 2: Equipment rented from supplier is requested offshore



Manually in SAP Automated in SAP for this demo¹ Manually in LogistiQ

A hand-drawn illustration of a person with arms raised, looking up at a large speech bubble. The person is drawn in a simple, sketchy style with a yellow head and torso, and blue arms and legs. The speech bubble is a large, rounded rectangle with a thick black outline and a small tail pointing down towards the person's head. Inside the speech bubble, the text "Any questions?" is written in a white, sans-serif font.

Any questions?

Wrap-up

Kinetic Offshore Logistics – An integrated and user-friendly solution for offshore logistics which combine the power of SAP with the flexibility of LogistiQ

Any unanswered questions? Or do want a private session?

Register it through this form:



erandresen@deloitte.no



ajha2@deloitte.no



vegulsett@deloitte.no



an@informatiq.no



al@informatiq.no



Deloitte refers to one or more of Deloitte Touche Tohmatsu Limited (“DTTL”), its global network of member firms, and their related entities (collectively, the “Deloitte organization”). DTTL (also referred to as “Deloitte Global”) and each of its member firms and related entities are legally separate and independent entities, which cannot obligate or bind each other in respect of third parties. DTTL and each DTTL member firm and related entity is liable only for its own acts and omissions, and not those of each other. DTTL does not provide services to clients. Please see www.deloitte.no to learn more.

Deloitte Norway conducts business through two legally separate and independent limited liability companies; Deloitte AS, providing audit, consulting, financial advisory and risk management services, and Deloitte Advokatfirma AS, providing tax and legal services.

Deloitte is a leading global provider of audit and assurance, consulting, financial advisory, risk advisory, tax and related services. Our global network of member firms and related entities in more than 150 countries and territories (collectively, the “Deloitte organization”) serves four out of five Fortune Global 500® companies. Learn how Deloitte’s approximately 415,000 people make an impact that matters at www.deloitte.no.

This communication contains general information only, and none of Deloitte Touche Tohmatsu Limited (“DTTL”), its global network of member firms or their related entities (collectively, the “Deloitte organization”) is, by means of this communication, rendering professional advice or services. Before making any decision or taking any action that may affect your finances or your business, you should consult a qualified professional adviser.

No representations, warranties or undertakings (express or implied) are given as to the accuracy or completeness of the information in this communication, and none of DTTL, its member firms, related entities, employees or agents shall be liable or responsible for any loss or damage whatsoever arising directly or indirectly in connection with any person relying on this communication. DTTL and each of its member firms, and their related entities, are legally separate and independent entities.