



aibel®

S⁵ Consulting

Mobile Plant Maintenance solution at Aibel

BlueWorx



Stian Windsland

Manager Region West /
Senior SAP Consultant and Architect

Tlf: 40 20 40 76

E-mail: stian@s5con.no



Øyvind Foss

Project Coordinator SAP Department /
Mobile Services Lead Aibel IT

Tlf: 412 80 837

E-mail: oeyvind.foss@aibel.com

Agenda

- Who is S5 Consulting?
- Alternative EAM Mobile Solutions
- BlueWorx solution for EAM
- Screenshots Notifications and Work Orders
- Presentation of Aibel
- Project background and experiences
- Questions?

S5 Consulting

- 38 Consultants
 - 4 offices in 3 countries – HQ in Lysaker, offices in Stavanger, Sweden (Stockholm) and Poland (Wrocław)
- S5 Partners
 - Consulting partners (Competence, Capacity, Costs)
 - Technology and Packaged Solutions (retail, logistics, EAM, tools, HW)

Technology partners



SAP® Recognized Expertise
User Experience


Consulting partners





Our SAP industry experience within EAM

Rent the **tools and equipment** you need for your projects.



What kind of tool are you looking for?
e.g. Workover



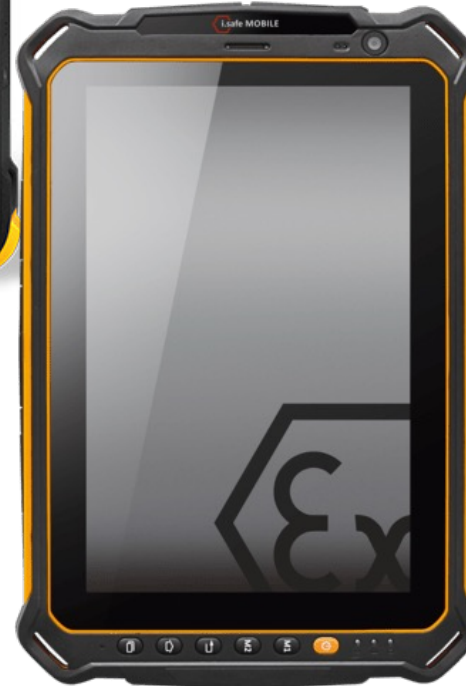
Statkraft



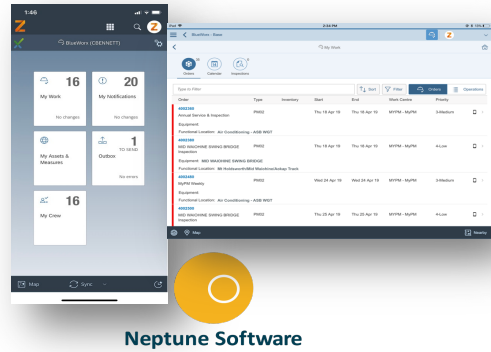
ConocoPhillips



Handheld Devices

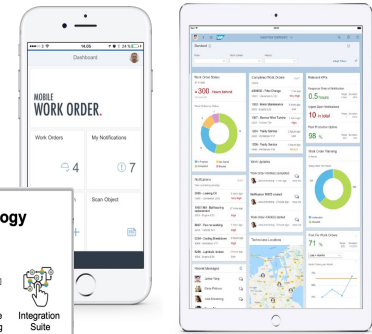


Alternative EAM Mobile solutions



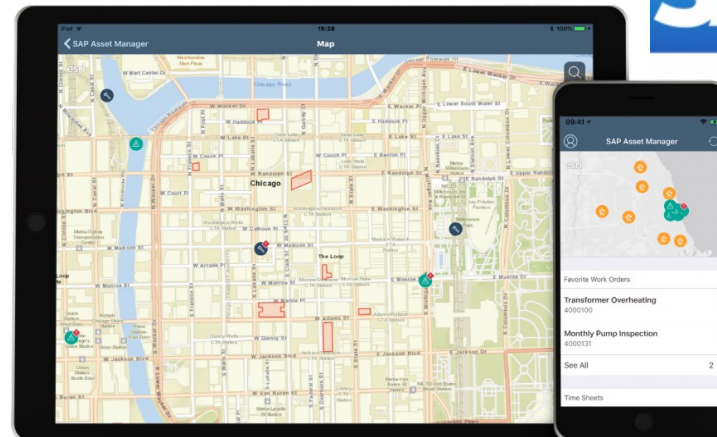
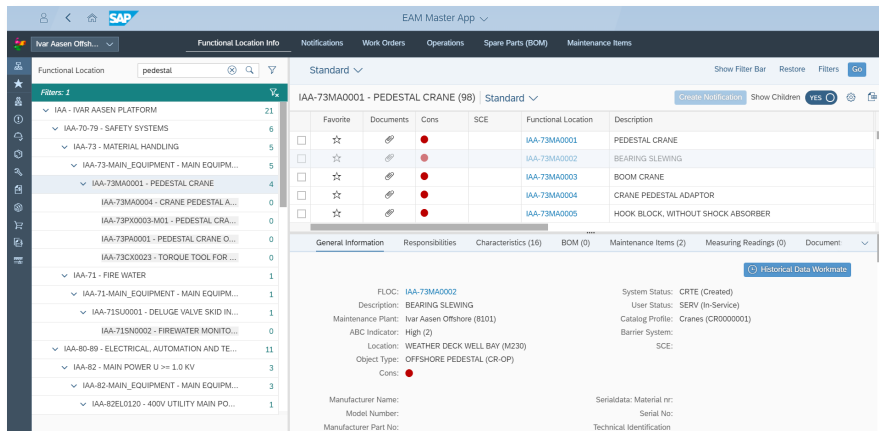
Neptune Software

BlueWorx



2BM MOBILE
WORK ORDER.

Custom Development



SAP Asset Manager

BlueWorx packaged EAM solution

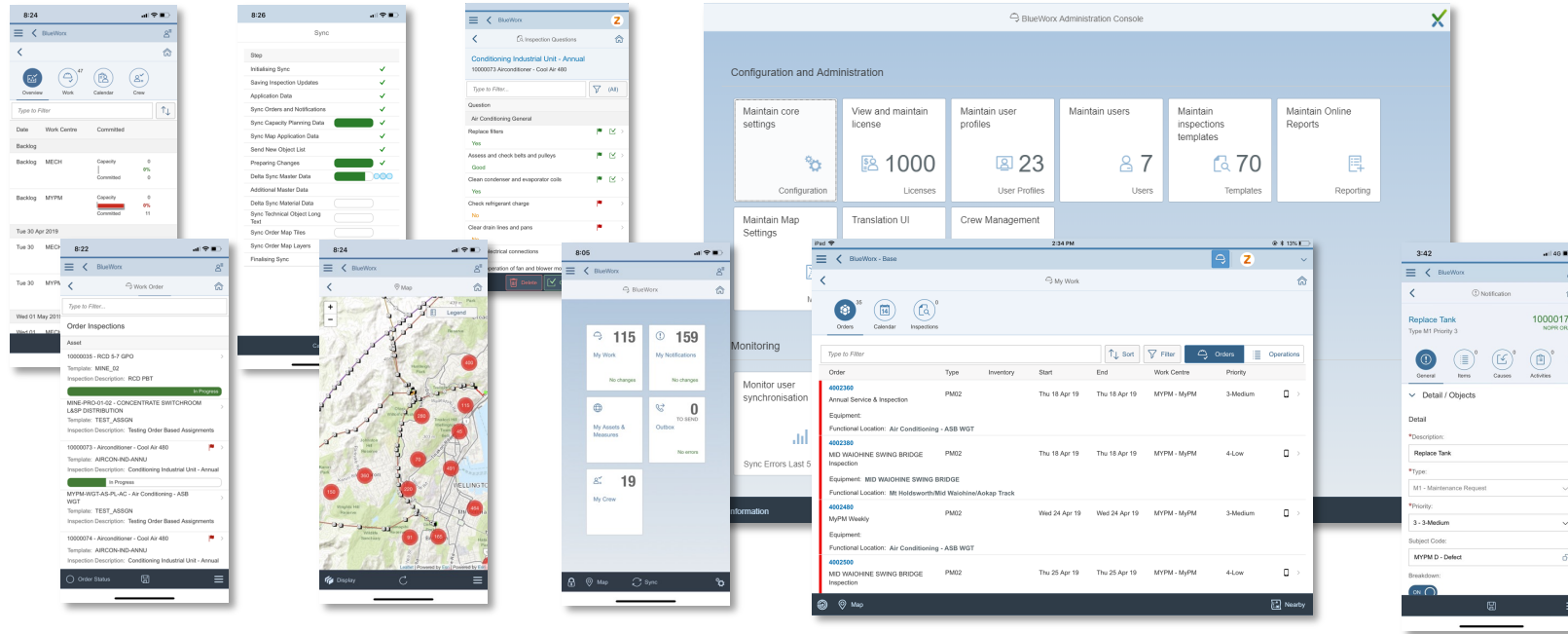
BlueWorx provides an intuitive user experience, using the latest SAP Fiori® UX across **mobile**, **tablet** and **desktop**. BlueWorx works fully offline allowing you to continue to work when your connection doesn't.

BlueWorx



Base functionality:

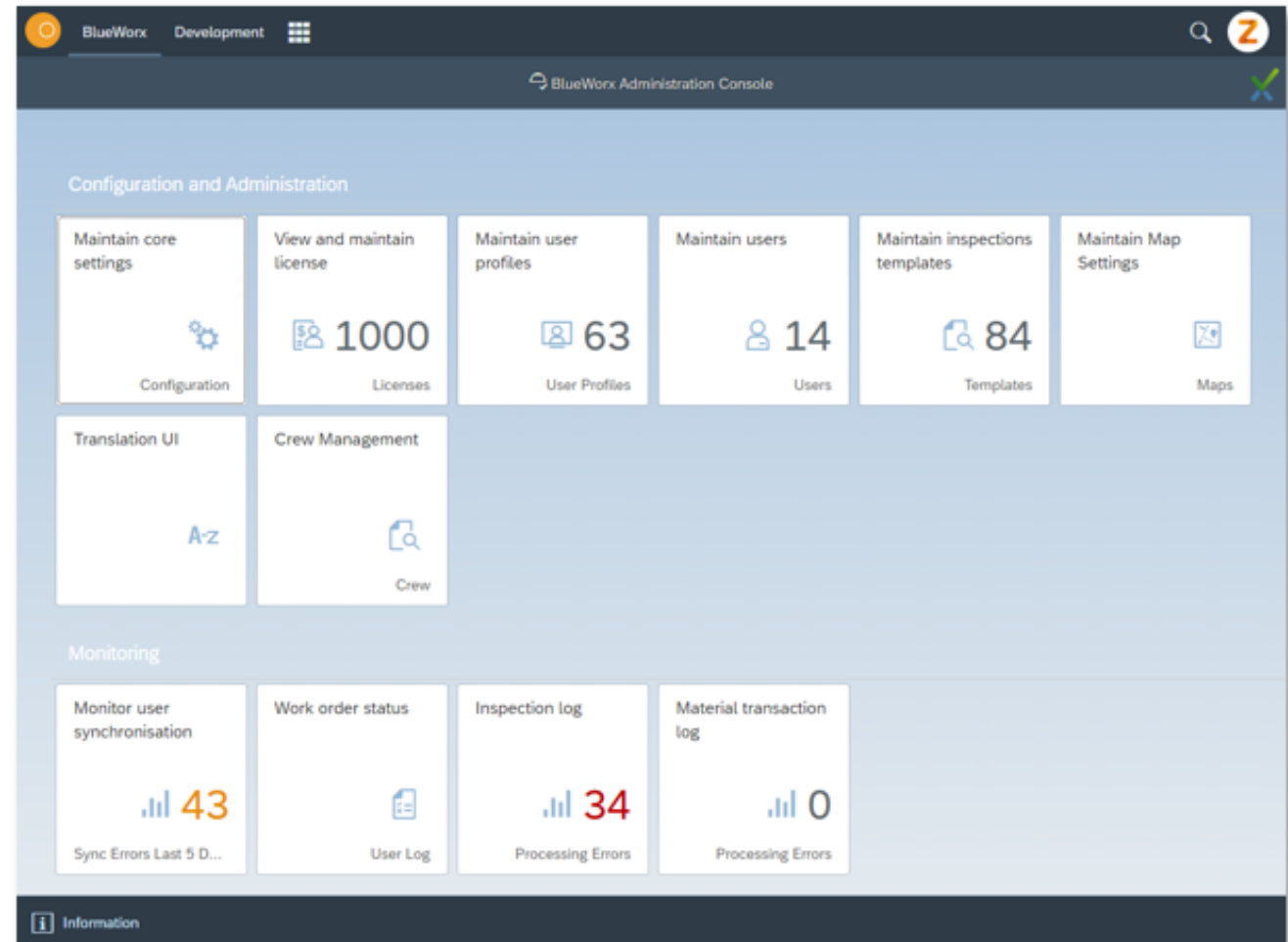
- Work and service orders
- Notifications
- Comprehensive asset inspections
- Functional location details
- Equipment details
- Material balances, issues, reservations and exchange
- Measurement reading list
- Measurement points
- Measurement documents
- Bills of materials
- Documents
- Optional Google map and Esri map integration



CONFIGURATION AND ADMINISTRATION SITE

A fully featured BlueWorx configuration and administration online site is provided including:

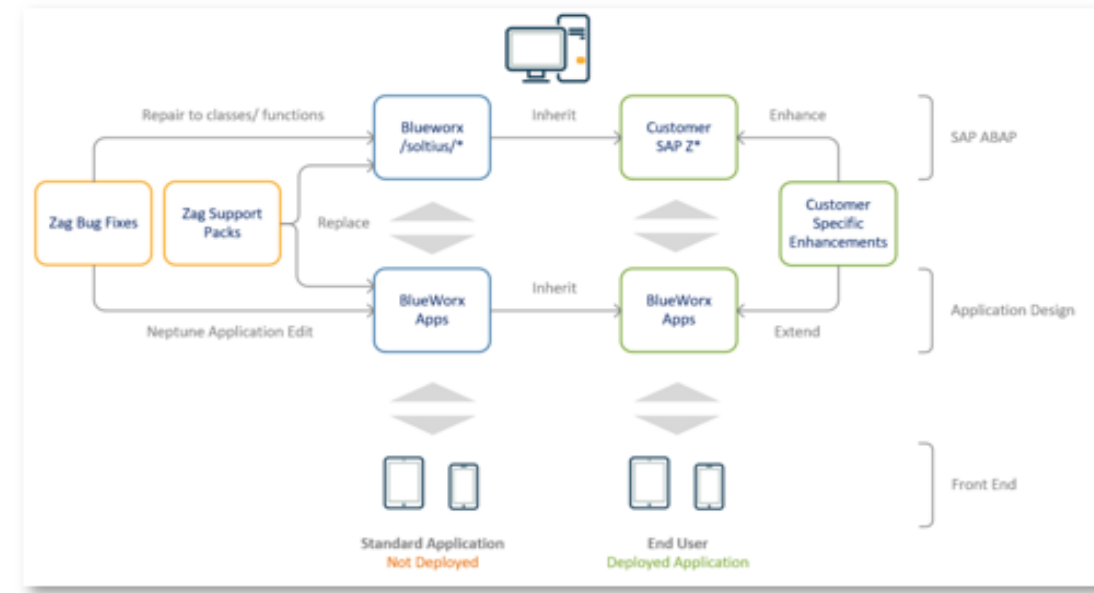
- Core settings
- Licence settings
- User profiles and users
- Inspections
- Maps
- Translations
- Crew component
- Synchronisation logs
- Work Order status
- Inspection logs
- Material processing logs



BLUEWORX IS FULLY EXTENSIBLE - BECAUSE NOT EVERYONE IS THE SAME

In a user focused solution the tool should adapt to the user and not the other way round.

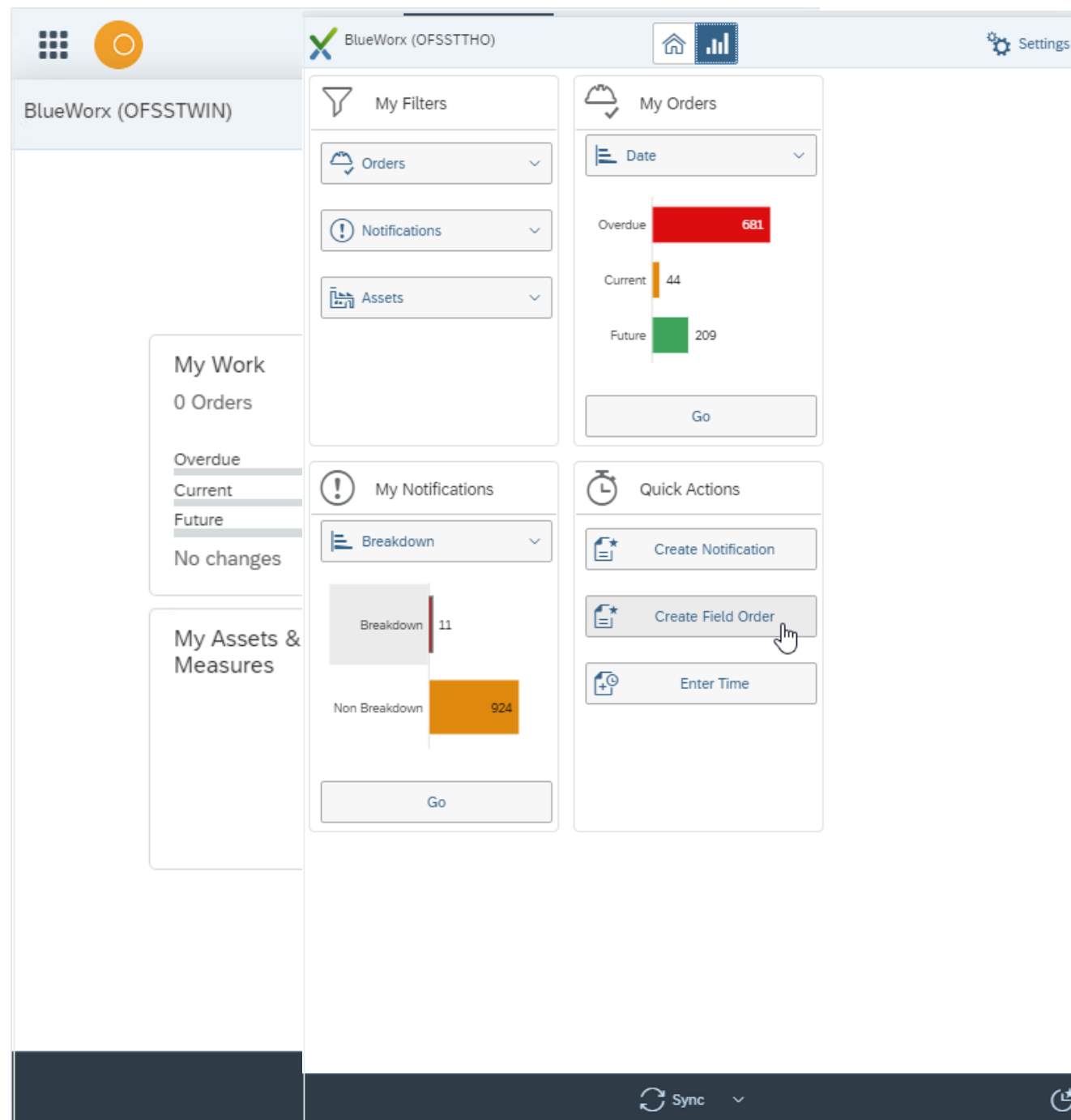
Validated requirements with ROI can be accommodated through enhancement of the standard BlueWorx product. It's been designed that way.



Areas more likely to involve customer specific delivery generally involve:

- External systems integration
- Pre-existing SAP customisations that are still effective and necessary
- Business or industry specific business process rules

Overview



Notifications

<

Type to Filter

Notification

10034781

Test fra device

Equipment:

Functional Location:

Priority: M-Middels

Required Start: Tue

Required Finish: Th

10034823

asdfasdf

Equipment:

Functional Location:

Priority: L-Lav

Required Start: Wee

Required Finish: Mo

Filter

Plant Maintenance

Create Field Work Order

Reference:

✕

*Functional Location:

NOHA-23-KVV-0006 - Tårnkran, Comansa Tørrdøkk 50T

✕

Equipment:

✕

Assembly:

✕

*Description:

Feil på heisverk

Long Text

*Order Type:

PM01 - Corrective order

▼

*Activity Type:

003 - Repair

▼

*Coding:

NOHA D - Død

▼

System Condition:

▼

Planner Group:

011 - Vedlikehold

▼

*Priority:

1 - H-Høy

▼

*Header Work Center:

NOHA ELE-VEDL - Elektro vedlikehold

*Basic Start / End:

06.03.2023

11.03.2023

First Operation

*Operation Work Center:

NOHA ELE-VEDL - Elektro vedlikehold

*Work / People:

6

H

2

People

*Control Key:

PM01 - Plant maintenance - internal

▼

Save

Cancel

Sync

Work Orders

The screenshot displays the SAP Work Order interface. On the left, a list of work orders is shown, with the following details for the selected work order 40036065:

- Work Order: 40036065
- Description: defekte kjørefunksjoner
- Work Centre: NOHA
- Equipment: PM01 H-Høy
- Functional Location: PM01 H-Høy

The main area shows the work order details for 40036065, including the description "defekte kjørefunksjoner" and the status "Preparation". A modal window titled "Order Status" is open, allowing the user to change the status of the work order. The modal contains the following options:

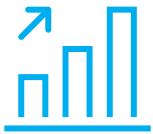
- Preparation Complete
- Ready for execution
- Started
- Ready for operation
- Not executed

The "Ready for operation" option is currently selected. The modal also includes a "Cancel" button. The background interface shows the "Work Order" header and various navigation icons.

Experienced turnkey provider



4 700 employees



Annual turnover of
NOK 12 billion



Presence in Norway, Singapore
and Thailand



Haugesund yard Norway

- Construction of new platforms and topside modules
- Maintenance and modifications of offshore and onshore facilities and modules
- Yard-stay services
- One of Norway's largest indoor assembly facilities
- Largest dry dock in Northern Europe



Facts about Haugesund yard

- 234,000 m² fabrication, assembly and ISPS area (International Ship and Port Facility Security)
- Indoor production, storage space, offices, accommodation, surface protection shops, canteens, training centre, outdoor storage and assembly areas
- Full-service yard
- Electrical, instrumentation, telecom, automation, welding, NDE, machining, completion and mc/commissioning
- Lifting capacity
- Indoor: 300 tons
- Outdoor: 75 tons
- Load-out jetty: 65 x 60 m
- Bearing capacity: 40t/m²
- Quay area: 600 m
- Quayside water depth: 8 – 25 m
- Access controlled facility
- Rigs can be moored quayside
- Area for assembly of decks 200 m from the quay at about 50 m depth

Project background

- Need for a mobile solution on top of Aibel SAP PM ECC HEC
- Neptune DXP SAP Edition already in use in Aibel since 2018 for WM and TM processes.
- S5 Consulting and Aibel evaluated different solutions but choose BlueWorx
- Scope : Enable Maintenance workers to processes notifications and workorders in an offline scenario using tablets.
- Project established Q3 2021
- Go Live Q3 2022



aibel®

Project experiences

- Some bugs in the BlueWorx solution, but good attention from ZAG support.
- BlueWorx new to S5 Consulting adding time to Go Live.
- Aibel SAP PM ECC setup «standard» but with room for improvements to maximize BlueWorx performance.
- Aibel internal resources in Haugesund was in a high activity period at Yard, so the project needed to take this into account
- BlueWorx has functionality beyond initial Aibel scope, like inspections and measurement. Inspections was included in the Aibel setup with minimal extra cost.



aibel®

Questions?



Consulting

aibel®