

Wexiödisk^W

BAR-FED TURN TRACK WD-BF90 & WD-BF180

(translation of the original documentation)

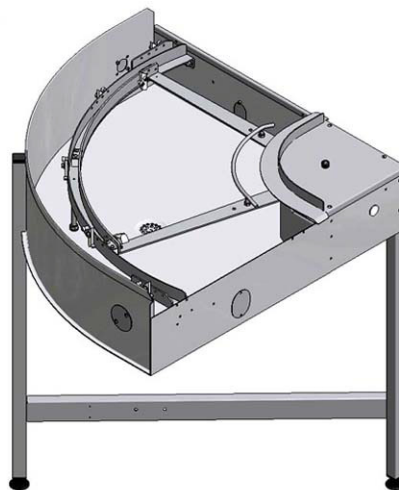


Read the manual before use!

Installation and user manual



WDBF_01



1. General instructions	1
1.1 Symbols used	2
1.2 Checking that the product and manual correspond	2
1.3 EU Declaration of Conformity	3
2. Safety instructions	4
2.1 General information	4
2.2 Transport	5
2.3 Installation	5
2.4 Operation	5
2.4.1 Risk of crushing	5
2.4.2 Risk of slipping	5
2.4.3 Sounds	5
2.5 Cleaning	5
3. Installation	6
3.1 General information	6
3.2 Requirements for the installation site	6
3.2.1 Lighting	6
3.2.2 Drain/waste pipe	6
3.2.3 Ventilation and ambient temperature	6
3.2.4 Space for servicing	6
3.3 Transport and storage	7
3.3.1 Unpacking	7
3.3.2 Recycling	7
3.4 Installation	8
3.4.1 Preparing for the installation	8
3.4.2 Positioning the machine	8
3.4.3 Connection to dishwasher	9
3.5 Connections	13
3.5.1 Electrical connection	13
3.5.2 Drain/waste pipe connection	14
3.6 Trial operation	15
3.6.1 Start-up schedule	15
3.7 Technical documentation	15

4. Instructions for use	16
4.1 Preparations	16
4.1.1 Machine design	17
4.2 Using the machine	18
4.3 After use – Cleaning	19
4.3.1 Incorrect cleaning methods	19
4.3.2 Daily cleaning	19
4.3.3 Operating problems	20
5. Technical information	21

1. General instructions

Read the instructions in this manual carefully as they contain important information regarding the correct, effective and safe installation, use and servicing of the machine. Service personnel should have access to all documentation for the machine.

Keep this manual in a safe place so that it can and should be used by other operators of the machine.



- The product is intended to be used together with dishwashers for washing dishware that is found in the general catering and restaurant trade.
- The capacity requirements of the machine can be found in the TECHNICAL DATA chapter.

Before the dishwasher is started up and used, the following points should be observed:



- The SAFETY INSTRUCTIONS chapter must be studied carefully before commissioning the machine
- Installation of the machine must be performed in accordance with the requirements and instructions indicated in the INSTALLATION and TECHNICAL SPECIFICATIONS chapters.
- Any personnel who may at some point use the machine must be trained in its operation, use and care.
- The machine should not be used by anyone suffering from a physical or mental illness.
- A close eye should be kept on any children in the vicinity of the machine to ensure they do not tamper with it.
- All cover plates must be fitted during use.



The machine and equipment requires an annual service. Contact one of our authorised or trained service companies for such a service.

General instructions

1.1 Symbols used



This symbol warns of situations where a safety risk may arise. The instructions given should be followed in order to prevent injury and dangerous situations.



This symbol on a machine part warns of electrical equipment. The machine must be entirely non-live during servicing, turn off the power at the power switch and if required, the switch should be locked to prevent unintentional operation. The component may only be removed by a qualified electrician.



This symbol warns that the machine's electronics are sensitive to electrostatic discharge (ESD), which is why a static electricity wristband must be used when handling the electronics at all times.



This symbol explains the right way to perform a task in order to prevent poor results and/or damage to the machine.



This symbol identifies recommendations and hints to help you get the best results when washing, to increase the machine's lifespan and reduce the risk of emergency shutdown.



This symbol explains the importance of careful and regular cleaning of the machine to meet hygiene requirements.



This symbol warns of the importance to read the manual before using the machine.



This symbol warns that local regulations must be followed for recycling of packaging etc. as well as the destruction of the machine.



This symbol shows where any earth cable for potential equalisation can be connected. The earth bolt is placed on the machine's stand.

1.2 Checking that the product and manual correspond

Check that the type of transport turn track on the rating plate corresponds with the type description on the cover of the manual. If manuals are missing, it is possible to order new ones from the manufacturer or the local distributor.

1.3 EU Declaration of Conformity

Wexiödisk

CE DECLARATION OF CONFORMITY

This declaration of conformity only refers to the machine/product in the condition in which it is supplied, not any additions or modifications made by the customer/user.

Manufacturer: Wexiödisk AB Mölndalvägen 4 B, 352 45 Växjö, Sweden
Tel: +46 (0)470 77 12 00 Fax: +46 (0)470 237 52 Email: wexiodisk@wexiodisk.se
Representative: Borinra General Trading, Dae Ryung Group Ltd, DSP bldg, Electronics Service CO., Ltd.
Fasus eht, #ZB, Martin Food Equipment Ltd, Mettler Pty Ltd,
M's Alshawa Conso Coates Pte Ltd, Nakarishi Mfg Co Ltd, QMB Corporation, Retal doo,
SHS Hyden I Purditan, TFM Group, Wexiödisk AB, Wexiödisk UK
Compiler of technical documentation: Magnus Ericsson

Our machines are manufactured **2016** in accordance with applicable EU directives and we declare under sole responsibility that the following products:

CE Declaration of Conformity,
EU's Machinery Directive 2006/42/EG, annex II A
EU's Low-voltage directive 2006/95/EC
EU's EMC-directive 2014/30/EU
EU's WEEE directive 2002/96/CE
EU's RoHS-directive 2011/65/EU

Harmful effects and risks:

- EN 12100 Machine safety: General principles for design - Risk assessment and risk reduction
- EN ISO Safety - Particular rules for machine tools
- EN 60203 Specification for degrees of protection provided by enclosures (IP code)
- EN 60332 Measurement methods for electromagnetic fields of household appliances and similar apparatus with regard to human exposure
- EN 61010-2-2 Electromagnetic compatibility (EMC) - Immunity standard for industrial environment
- EN 55014-1 Electromagnetic compatibility: Requirements for household appliances, electric tools and similar apparatus (EMC) - Part 1: Emission
- EN 50518 Technical documentation for the assessment of electrical and electronic products with respect to the restriction of hazardous substances

The above directives and standards are common to the different machine groups.
Standards in the tables below are specific to the different machine groups.

Straight turner, Pot/washers Turned-dish systems with accessories:

WD-400 (P11000-C)
WD-PF8887 & WD-4X & WD-7 & WD-HC (P12000-C)
WD-410 (P11000-C)
WD-PF8888 (P11000-C)
WD-11 & WD-15 & WD-21 (C &
WD-15 & WD-21 (C & WD-15 & WD-21 (C & WD-15 & WD-21 (C &
WD-15 & WD-21 (C & WD-15 & WD-21 (C &
WD-15 & WD-21 (C & WD-15 & WD-21 (C &
WD-15 & WD-21 (C & WD-15 & WD-21 (C &
WD-15 & WD-21 (C & WD-15 & WD-21 (C &
WD-15 & WD-21 (C & WD-15 & WD-21 (C &
WD-15 & WD-21 (C & WD-15 & WD-21 (C &

Harmonised standards to: EU's Machinery Directive 2006/42/EG, annex II A

EN 60203 Safety: Specification for degrees of protection provided by enclosures (IP code)
EN 60332-2-2 Safety: Measurement methods for electromagnetic fields of household appliances and similar apparatus with regard to human exposure
EN 61010-2-2 Safety: Electromagnetic compatibility (EMC) - Immunity standard for industrial environment

Cutters, Slicers, dicing machines:

WD-300 & WD-31 & WD-32 & WD-33 & WD-34 & WD-35 & WD-36 & WD-37 & WD-38 & WD-39 & WD-40 & WD-41 & WD-42 & WD-43 & WD-44 & WD-45 & WD-46 & WD-47 & WD-48 & WD-49 & WD-50 & WD-51 & WD-52 & WD-53 & WD-54 & WD-55 & WD-56 & WD-57 & WD-58 & WD-59 & WD-60 & WD-61 & WD-62 & WD-63 & WD-64 & WD-65 & WD-66 & WD-67 & WD-68 & WD-69 & WD-70 & WD-71 & WD-72 & WD-73 & WD-74 & WD-75 & WD-76 & WD-77 & WD-78 & WD-79 & WD-80 & WD-81 & WD-82 & WD-83 & WD-84 & WD-85 & WD-86 & WD-87 & WD-88 & WD-89 & WD-90 & WD-91 & WD-92 & WD-93 & WD-94 & WD-95 & WD-96 & WD-97 & WD-98 & WD-99 & WD-100 & WD-101 & WD-102 & WD-103 & WD-104 & WD-105 & WD-106 & WD-107 & WD-108 & WD-109 & WD-110 & WD-111 & WD-112 & WD-113 & WD-114 & WD-115 & WD-116 & WD-117 & WD-118 & WD-119 & WD-120 & WD-121 & WD-122 & WD-123 & WD-124 & WD-125 & WD-126 & WD-127 & WD-128 & WD-129 & WD-130 & WD-131 & WD-132 & WD-133 & WD-134 & WD-135 & WD-136 & WD-137 & WD-138 & WD-139 & WD-140 & WD-141 & WD-142 & WD-143 & WD-144 & WD-145 & WD-146 & WD-147 & WD-148 & WD-149 & WD-150 & WD-151 & WD-152 & WD-153 & WD-154 & WD-155 & WD-156 & WD-157 & WD-158 & WD-159 & WD-160 & WD-161 & WD-162 & WD-163 & WD-164 & WD-165 & WD-166 & WD-167 & WD-168 & WD-169 & WD-170 & WD-171 & WD-172 & WD-173 & WD-174 & WD-175 & WD-176 & WD-177 & WD-178 & WD-179 & WD-180 & WD-181 & WD-182 & WD-183 & WD-184 & WD-185 & WD-186 & WD-187 & WD-188 & WD-189 & WD-190 & WD-191 & WD-192 & WD-193 & WD-194 & WD-195 & WD-196 & WD-197 & WD-198 & WD-199 & WD-200 & WD-201 & WD-202 & WD-203 & WD-204 & WD-205 & WD-206 & WD-207 & WD-208 & WD-209 & WD-210 & WD-211 & WD-212 & WD-213 & WD-214 & WD-215 & WD-216 & WD-217 & WD-218 & WD-219 & WD-220 & WD-221 & WD-222 & WD-223 & WD-224 & WD-225 & WD-226 & WD-227 & WD-228 & WD-229 & WD-230 & WD-231 & WD-232 & WD-233 & WD-234 & WD-235 & WD-236 & WD-237 & WD-238 & WD-239 & WD-240 & WD-241 & WD-242 & WD-243 & WD-244 & WD-245 & WD-246 & WD-247 & WD-248 & WD-249 & WD-250 & WD-251 & WD-252 & WD-253 & WD-254 & WD-255 & WD-256 & WD-257 & WD-258 & WD-259 & WD-260 & WD-261 & WD-262 & WD-263 & WD-264 & WD-265 & WD-266 & WD-267 & WD-268 & WD-269 & WD-270 & WD-271 & WD-272 & WD-273 & WD-274 & WD-275 & WD-276 & WD-277 & WD-278 & WD-279 & WD-280 & WD-281 & WD-282 & WD-283 & WD-284 & WD-285 & WD-286 & WD-287 & WD-288 & WD-289 & WD-290 & WD-291 & WD-292 & WD-293 & WD-294 & WD-295 & WD-296 & WD-297 & WD-298 & WD-299 & WD-300 & WD-301 & WD-302 & WD-303 & WD-304 & WD-305 & WD-306 & WD-307 & WD-308 & WD-309 & WD-310 & WD-311 & WD-312 & WD-313 & WD-314 & WD-315 & WD-316 & WD-317 & WD-318 & WD-319 & WD-320 & WD-321 & WD-322 & WD-323 & WD-324 & WD-325 & WD-326 & WD-327 & WD-328 & WD-329 & WD-330 & WD-331 & WD-332 & WD-333 & WD-334 & WD-335 & WD-336 & WD-337 & WD-338 & WD-339 & WD-340 & WD-341 & WD-342 & WD-343 & WD-344 & WD-345 & WD-346 & WD-347 & WD-348 & WD-349 &

2. Safety instructions



Read the chapter GENERAL INSTRUCTIONS carefully before starting work.

2.1 General information



The dishwasher the turn track is connected to is CE marked, meaning the entire installation (dishwasher and turn track) meets the requirements of the EU Machinery Directive on product safety. Product safety means that the design of the equipment will prevent personal injury or damage to property. The CE mark is only valid for an unmodified machine. Any damage to the machine arising from failure to follow the instructions will invalidate the supplier's warranty and product liability.



Installation, repairs and servicing must be performed by a qualified professional in accordance with applicable local and national regulations. We recommend that the work is performed by the manufacturer or one of the manufacturer's authorised service companies.

To further improve safety during installation, operation and servicing, the operator and the personnel responsible for installing and servicing should read the safety instructions carefully.



In order to avoid dangerous situations, the following must be followed:

- Switch off the machine immediately in the event of failure or malfunction.
- Make sure the machine is non-live before removing the cover plate. Turn off the power using the power switch. If required, the switch must be locked to prevent unintentional operation.
- The machine and equipment requires an annual service. The machine should be serviced by a person authorised or trained to do so by us. Use original spare parts.
- Warranty repairs must be performed by an authorised company. Contact an authorised service company to draw up a programme of preventive care and maintenance. For authorised service companies, please see www.wexiodisk.com or contact Wexiödisk AB.
- The regular checks described in the manual must be carried out in accordance with the instructions.

Safety instructions

2.2 Transport



Handle the equipment with care during unloading and transport to avoid the risk of it tipping over. Never lift or move the machine without using the wooden packaging to support the stand.

2.3 Installation

The turn track is powered by the dishwasher's feed mechanism. See the dishwasher's Installation and user manual if intervention in the dishwasher's electrical equipment is necessary.

2.4 Operation



Be very careful around the product when the machine is in operation.

2.4.1 Risk of crushing



Avoid contact with the turn track's drive mechanism during use. The movement of the drive mechanism can cause crushing injuries.

2.4.2 Risk of slipping



The floor should be kept clean and dry to eliminate any risk of slipping. Mop up any water and leftover food that has been spilt.

2.4.3 Sounds



The machine is not silent during operation, see TECHNICAL SPECIFICATIONS. Hearing protection may therefore need to be used.

2.5 Cleaning



Do not use a pressure washer for cleaning. An ordinary hose is all that is required for rinsing the turn track.

3. Installation



Read the chapters GENERAL INSTRUCTIONS and SAFETY INSTRUCTIONS carefully before starting work.

3.1 General information



Read these instructions carefully, as they contain important information regarding the correct installation method.



The instructions should be used together with the dishwasher's wiring diagram. These can be found in the dishwasher's electrical cabinet.

3.2 Requirements for the installation site

The requirements for installation of the product are the same as for the dishwasher to which it is connected (see also the dishwasher's installation and user manual.)

3.2.1 Lighting

In order to ensure the best possible working conditions during installation, operation, servicing and maintenance, make sure that the machine is installed in a well-lit room.

3.2.2 Drain/waste pipe

There must be a drain pipe with an effective trap for water used for rinse cleaning. The floor drain capacity can be found in the TECHNICAL SPECIFICATIONS.

3.2.3 Ventilation and ambient temperature

The product is intended to be used in an indoor environment at normal room temperature. In order to ensure the best possible working conditions, a certain air renewal rate is required in the dishwashing room. The ventilation requirements for the dishwashing room are to be dimensioned on the basis of the applicable standards.

3.2.4 Space for servicing

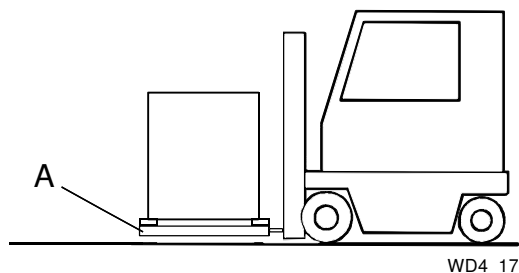
A 1-metre area should be left clear in front of the machine for servicing purposes.

3.3 Transport and storage

Always transport the product in an upright position.



Take care during transport, as there is a risk of tipping. N.B.! The machine must not be transported without a pallet or other support. This may also result in damage. When transporting the machine without a normal wooden pallet, always check that none of the components underneath the machine can be damaged.



A=Wooden pallet



If the turn track is not to be installed immediately, it must be stored in a frost-free area where the air is dry.

3.3.1 Unpacking

Check that all parts have been delivered by comparing them with the delivery note.

Remove the packing material. Inspect the machine for any transport damage.

3.3.2 Recycling

Packaging must be sent for destruction or recycling in accordance with local regulations.



The machine is manufactured from stainless steel plate, among other things, and also contains electronic components. Recycling of the appliance when its economic lifetime has been reached must be carried out in accordance with current rules and regulations.

3.4 Installation

3.4.1 Preparing for the installation



- Check that there is sufficient room for the machine at the installation location.
- Check that the installation location has the correct waste connection.

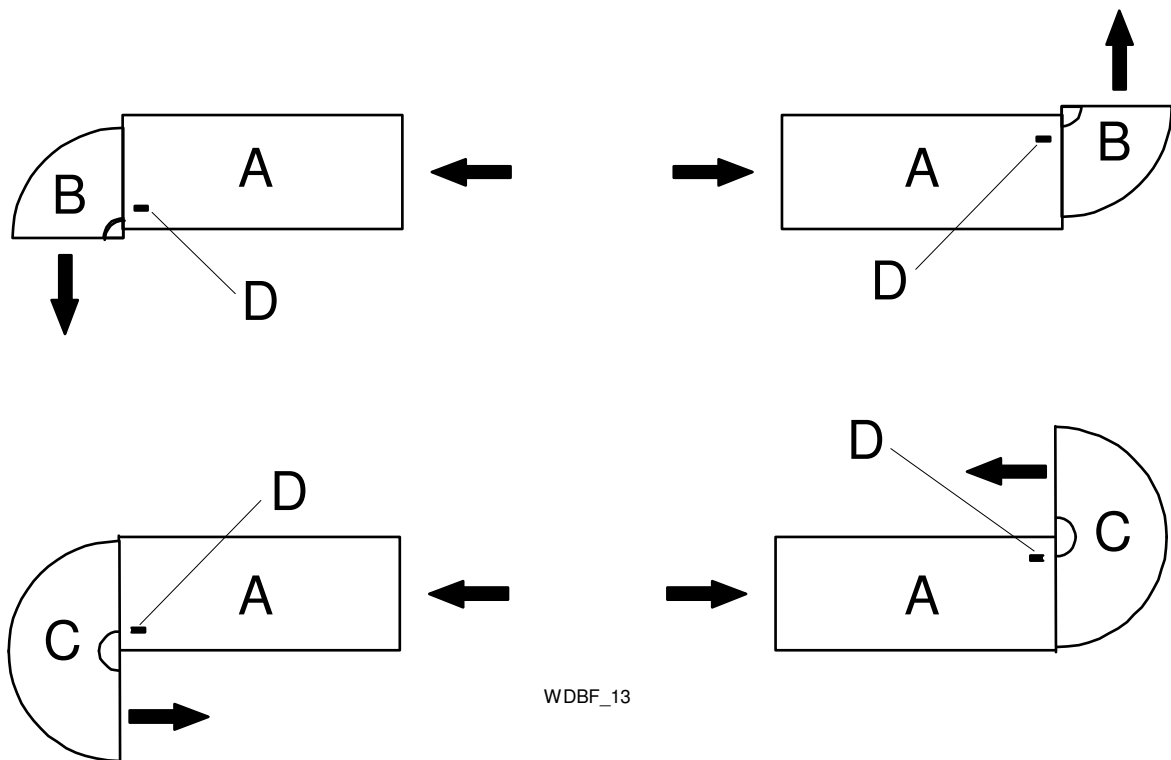
3.4.2 Positioning the machine

Check the following points before the machine is placed in position:



- Remove the protective plastic on the sides which are to be stood against a wall.
- Place the turn track in position and check that it, and any accessories, are horizontal. Adjust the height with the legs.

3.4.3 Connection to dishwasher



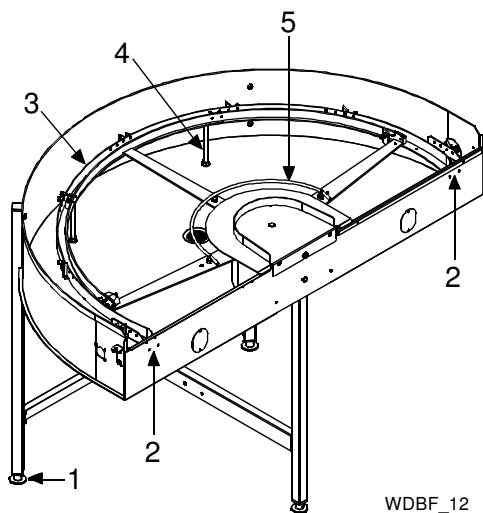
WDBF_13

A=Dishwasher
B=WD-BF90
C=WD-BF180
D=Feed hook to remove



- Connect the turn track and other peripheral equipment to the dishwasher in accordance with the dishwashing room's layout drawing.
- When the turn track is connected to the infeed on a dishwasher, a straight section must be used between the turn track and the machine and any hooks must be retained.
- When the WD-BF90/WD-BF180 is connected to the outfeed of a dishwasher, the outermost feed hook (D) (in the machine) on the side the WD-BF90/WD-BF180 is turned towards, must be removed.
- Check that the machine to which WD-BF90/WD-BF180 is being connected has the correct set point value (row 115) set for this option.

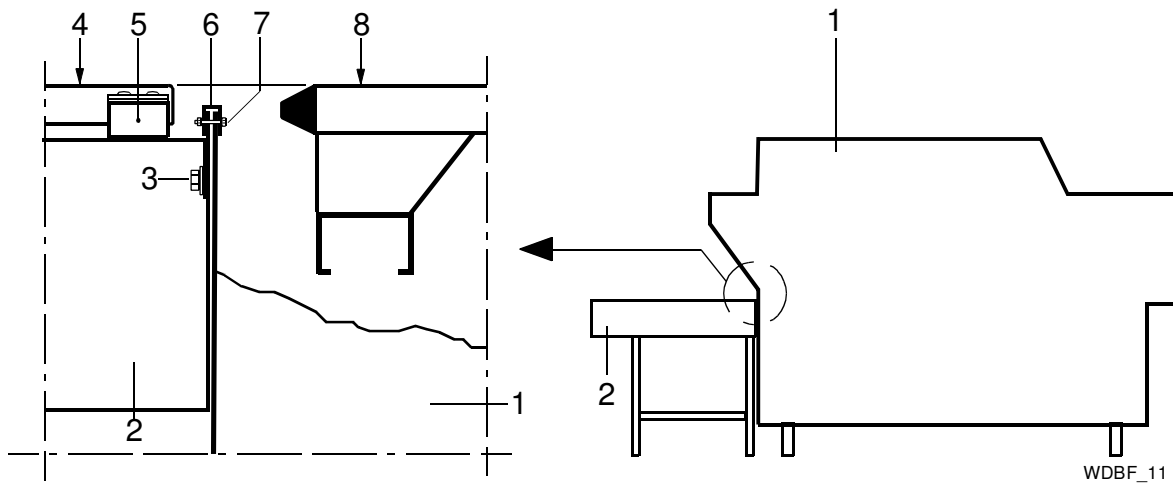
Adjusting the turn track



180° turn track

1. Adjustable foot for adjusting the height of the turn track in relation to the dishwasher.
2. Lock nuts on the inside for adjusting the height of the stop rail.
3. Stop rail
4. Support for stop rail (adjustable)
5. Basket support (adjustable)

Installation



1. Dishwasher
2. Turn track
3. Lock nut + washer
4. Drive bar
5. Sliding block
6. Cover strip
7. Screw + nut + washer
8. Dishwasher loading cradle

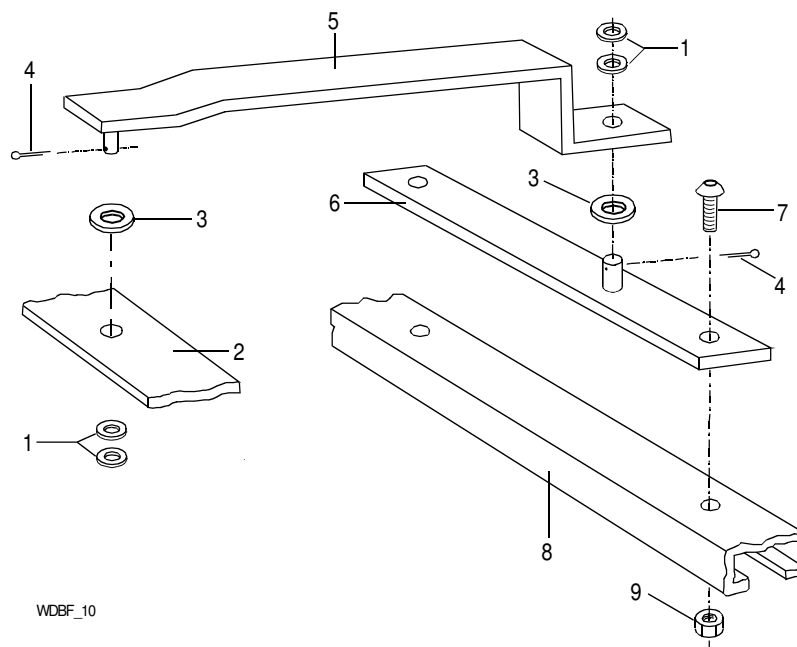
The turn track is set to its default settings at the factory, but may need to be adjusted according to the conditions at the place of installation.



- The holes in the connection end of the turn track must fit against the hole in the lower edge of the dishwasher's outfeed opening.
- Fit the cover strip (6) and screw the turn track and machine together using the screws, washers and nuts provided (7).
- Adjust the drive bar (4) so that the upper edge is at the same height as the sliding surface on the machine's loading cradle (8). The height of the drive bar is adjusted by raising or lowering the stop rail attached to the end of the turn track using the lock nuts at (3) and using the stop rail's adjustable support attached to the bottom plate of the turn track.

Fitting the feeding arm

The turn track's drive mechanism must be connected to the machine's loading cradle once the turn track has been fitted and adjusted.



WDBF_10

1. Stainless steel washer
 2. Turn track drive arm
 3. Plastic washer
 4. Cotter pin
 5. Feeding arm
 6. Plate
 7. Screw
 8. Dishwasher loading cradle
 9. Lock nut
- The plate (6) is fitted to the existing holes on the machine's loading cradle (8). The plate must be turned in the right direction depending on the feed direction of the equipment.
 - The feeding arm (5) is connected to the loading cradle (8) and to the existing holes on the turn track's drive arm (2). Note the position of the plastic washers (3).

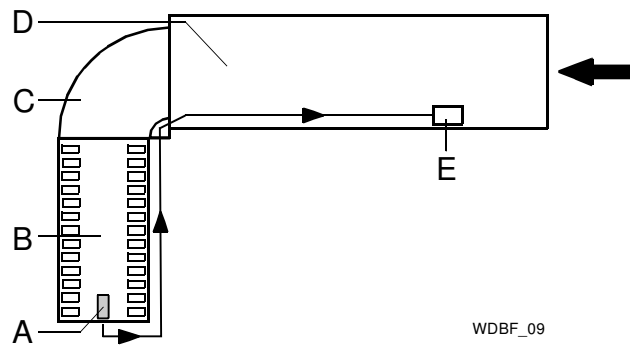
3.5 Connections

3.5.1 Electrical connection

Information about electrical connections can be found on the dishwasher's wiring diagrams. The wiring diagrams are shown on the inside of the electrical cabinet door. Store the diagrams in the electrical cabinet after installation.

Cabling from the limit switch

The cable from the limit switch on the connected roller table is drawn through an existing hole at the end of the dishwasher and on to the terminal box located in the lower part of the dishwasher behind the front panels (see wiring diagram for connection).



WDBF_09

Connection of 90° turn track and roller table on the machine's outfeed side

A=Limit switch

B=Roller table

C=Turn track

D=Dishwasher

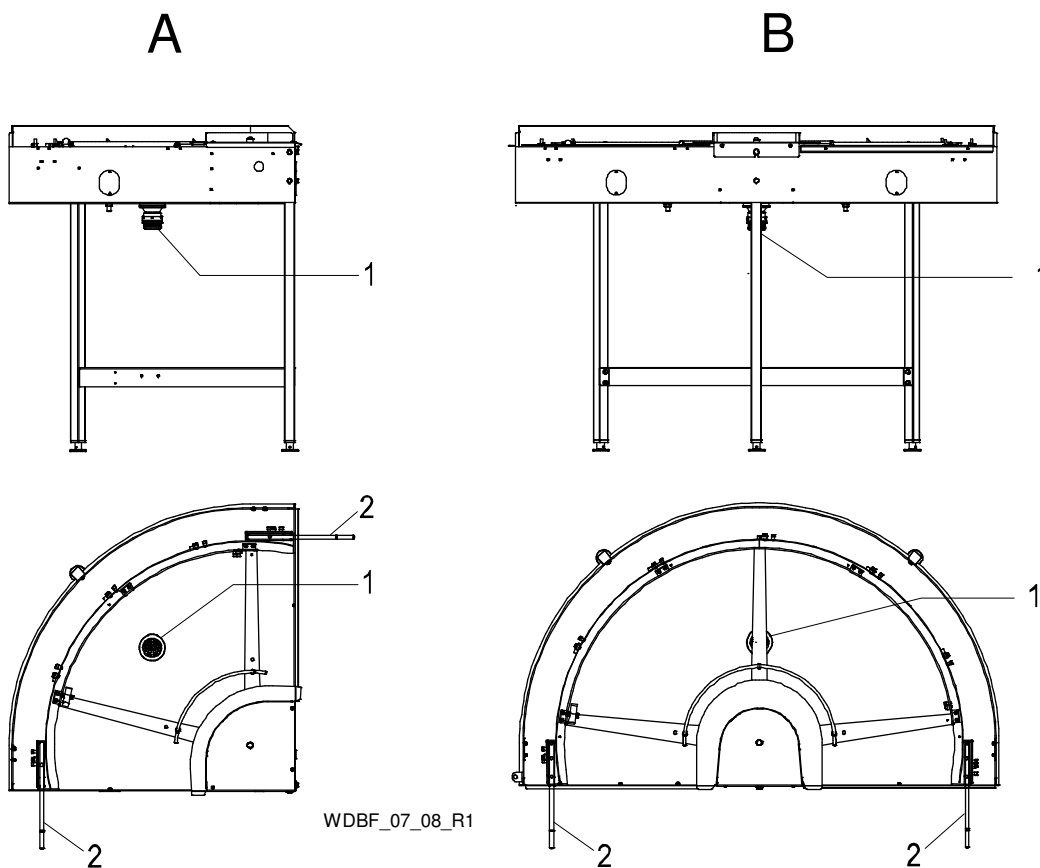
E=Terminal box

Installation

3.5.2 Drain/waste pipe connection

Connect the drain at (1). The drain pipe can be connected to the dishwasher drain or run to a floor drain, where it must end above the water level. The drain should be a 50 mm metal pipe if there is a risk of mechanical collision.

Ensure that the drain connection is kept in place by using e.g. cable ties in the designated areas.



A=90° turn track

B=180° turn track

1=Drain connection

2=Basket support (x1 to be fitted on the feed side of the turn track)

3.6 Trial operation

Test the turn track together with the dishwasher. Prepare the machine for a trial run by following the INSTRUCTIONS FOR USE in the machine's user manual. The instructions describe the measures that must be taken to prepare the machine for operation.

3.6.1 Start-up schedule

This should be completed when the machine is started up and used.

Machine type:
Machine serial number:
Installation date:

Read the installation and user manuals carefully. Then check the following points:

Start the dishwasher and load baskets containing dishware. Perform the following checks:

- Transport of baskets along the turn track.
- Check the function of the drive unit and stop rail catches.
- Limit switch function. When a basket activates the limit switch on a connected roller table, the turn track and dishwasher should stop. When the basket is removed the equipment should restart automatically.
- Drainage system integrity.

Train and inform personnel concerning:

- Care (daily, weekly and other frequencies)
- Recommendations concerning annual service.

3.7 Technical documentation

For correct use and servicing, it is essential that the documentation accompanying the equipment be made available to personnel who will be using it. The installation and user manual, which describes handling and care, among other things, should be stored near the equipment.

4. Instructions for use



Read the chapters GENERAL INSTRUCTIONS and SAFETY INSTRUCTIONS carefully before starting work.



This chapter describes what must be done with the turn track:

- Prior to use
- Regarding the way in which the machine should be used
- Following use

4.1 Preparations

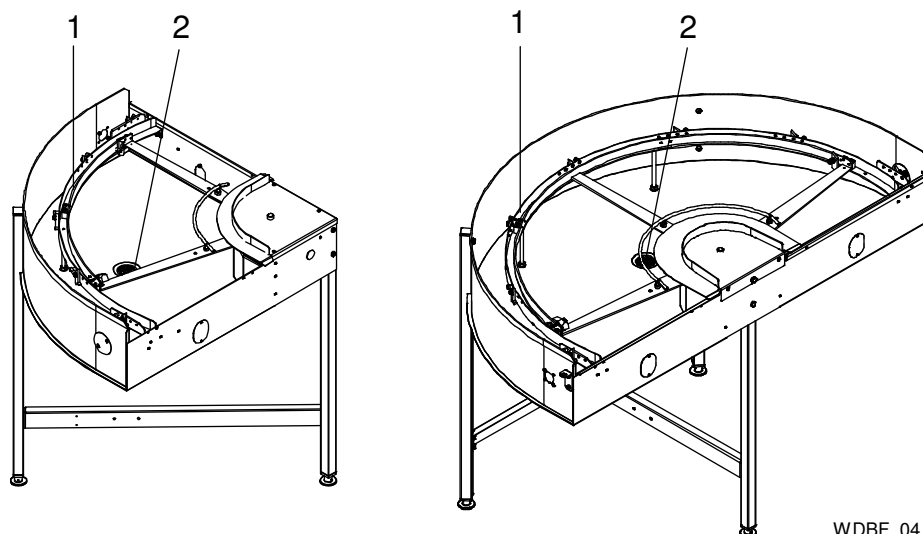
Check:



- That the turn track and removable parts have been cleaned. If not – clean them
- That removable parts are correctly in place
- That the dishwasher connected has been started up

Instructions for use

4.1.1 Machine design



WDBF_04

90° and 180° turn track
1=Machine powered turn track
2=Drain filter

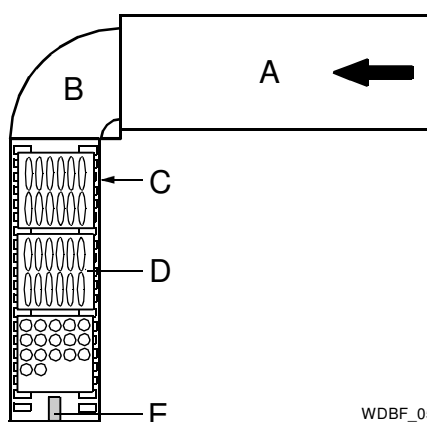
Instructions for use

4.2 Using the machine



The turn track must not be used as a storage area for rubbish or for storing other objects.

- The turn track is powered by the dishwasher and operates when the dishwasher is feeding baskets through the machine.
- When a basket of clean items leaves the dishwasher, it is transported by the turn track to the connected roller table.
- Once the roller table is full of baskets, the first basket will activate the roller table's limit switch (E). The dishwasher and turn track stop.
- Remove the baskets from the roller table. The dishwasher and turn track start automatically.



WDBF_05

Example of installation: Dishwasher with 90° turn track and roller table

A=Dishwasher

B=Turn track

C=Roller table

D=Basket

E=Limit switch

The limit switch is activated by a basket and the equipment stops



A turn track can also be connected to the dishwasher's infeed opening and used for transporting baskets of dirty items into the machine.

4.3 After use – Cleaning

HACCP

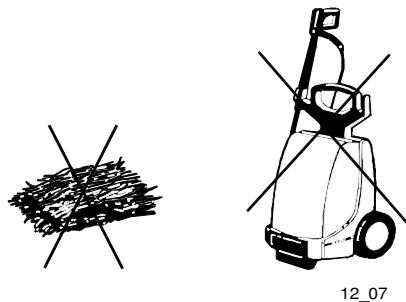
HACCP is a preventive inspection system which ensures that hygiene requirements are met during the washing process and cleaning of the equipment. As a result of its design, the turn track meets strict hygiene requirements. Regular, thorough cleaning is also important from a hygiene perspective. Equipment that is properly cleaned reduces the risk of dirt accumulating, increases the service life of the equipment and reduces the risk of urgent interruptions to operation.

4.3.1 Incorrect cleaning methods



N.B.! An incorrect cleaning method may damage the equipment. The following points must be observed:

- Do NOT use steel wool, as this will cause corrosion.
- If detergent is used, it must not contain abrasives. Detergents containing abrasives will damage the stainless steel panels.
- Pressure washers can damage the connected machine and must NOT be used for cleaning purposes. Never use a pressure washer to clean the floor within 1 metre of the machine. The supplier cannot be held liable for any faults caused by the use of pressure washers on the machine and any such use may invalidate the warranty. There is a risk of splashing even if the floor is hosed down



Steel wool and pressure washers must not be used for cleaning

4.3.2 Daily cleaning



Before cleaning begins, the dishwasher must be switched off

- Remove the drain filter (2) and clean it.
- Rinse the inside of the turn track (we recommend cleaning gun WD240.9009 for this)
- Replace the filter.
- Wipe the outside of the turn track with a soft, damp cloth.

4.3.3 Operating problems

When you contact service personnel, you will need to provide the following information:

- Type of equipment
- Connected dishwasher serial number and installation date
- A brief description of the problem.
- What happened to cause the problem

5. Technical information

The manufacturer reserves the right to make changes to the technical data.

Technical data		
	WD-BF90	WD-BF180
Weight excl. packaging (kg)	20	30
Basket size (mm)	500x500	500x500
Drain connection (mm)	50	50