



RACK CONVEYOR DISHWASHER

FEATURES

- Our smallest rack conveyor machine.
- The WD-Touch display guides you through the washing process with an intuitive touch screen. Easy navigation with built-in user manuals.
- A compact and flexible rack conveyor machine with a medium capacity that delivers excellent wash results.
- A chemical washing zone, dual final rinse and control system as standard.
- A unique basket feed system which allows for optimal contact time.
- The large, well-balanced sliding doors make each of the washing areas easily accessible.
- Easy to clean and operate
- Flexible control
- The machine's surfaces are smooth and make it easy for the user to clean and maintain a good hygiene.
- The doors are easy to handle and can be completely removed when cleaning.
- Contactor* for entry and exit conveyor
*Note! Always specify the motor power of the conveyor. If not specified protector motor switch of 0.63 - 1 A will be delivered.
- Thanks to the heat and sound insulation the surface temperature and the sound level are low, which gives a good working environment.



OPTIONS

- Marine version 400/3/50Hz without neutral
- Marine version 440/3/60Hz without neutral
- Back flow protection according to EN 1717. Break tank included with booster pump
- Booster heater 9 kW for re-circulating final rinse
- Booster heater 9 kW for cold water connection
- Water connection from floor
- Stainless pipes and couplings in final rinse
- Timer for pre-rinse
- Timer for through-rinse
- Timer for chain-rinse
- Contactor for control of pre-rinse without timer
- Contactor for pre-rinse with booster pump

TECHNICAL DATA	WD-11
Environmental temperature at 20°C room temperature (°C)	35°C
Ventilation of the machine (m³/h)	1600
Basket size (mm)	500 x 500
Length, installation (mm)	1355
Width (mm)	697
Height, closed hatch (mm)	1685±50
Height, open hatch (mm)	1950±50

CAPACITY AND OPERATION DATA	WD-11
Capacity according to DIN 10510 (baskets/h)	56
Capacity, recommended (baskets/h)	50-100
Capacity, max (baskets/h)	180
Water consumption (litres/basket)	2
Energy consumption (kWh of connected power)	70-90%
Sound level* (dB(A)) normal dish	68

* Measured 1 metre from the machine.

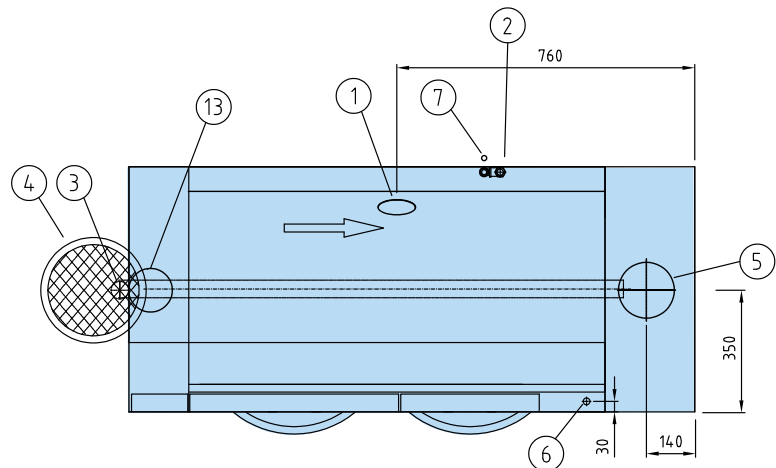
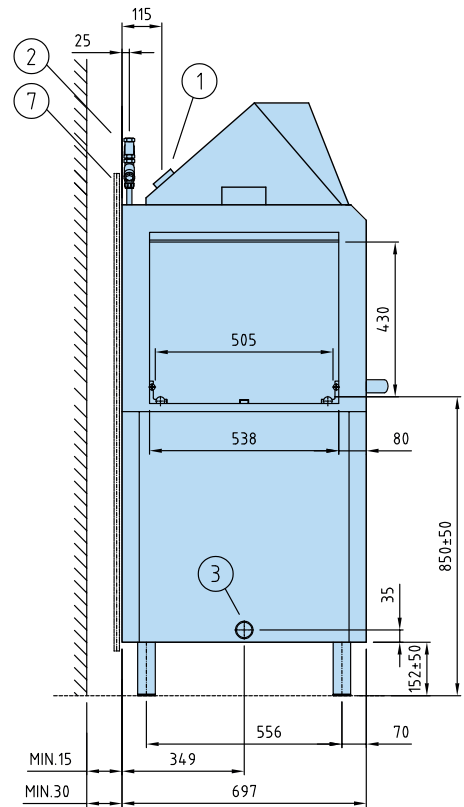
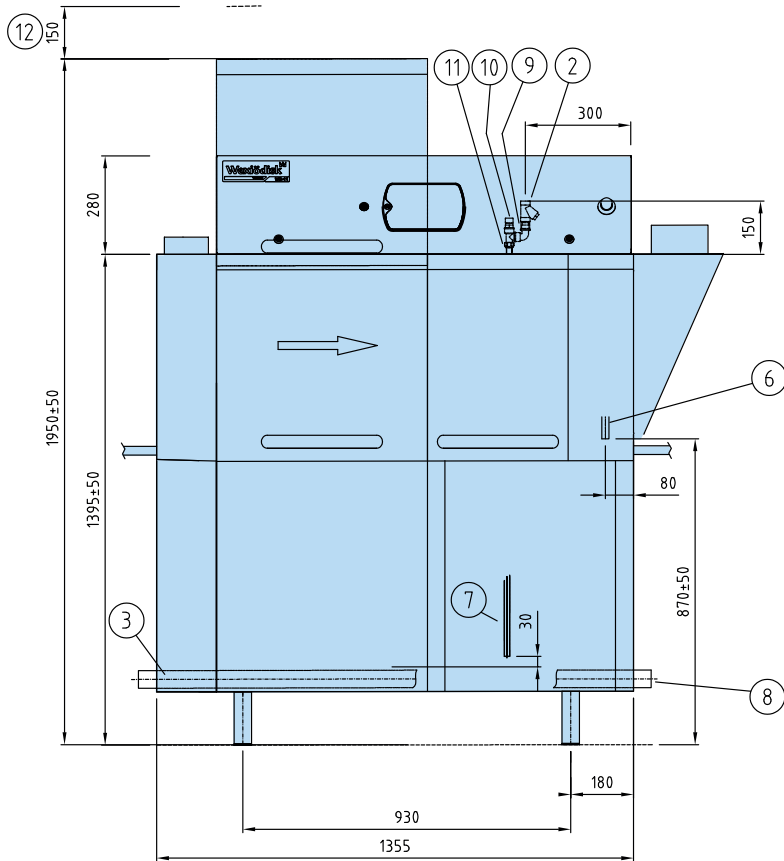
CONNECTION, MACHINE	WD-11
Chemical wash pump (kW)	1.5
Final rinse pump (kW)	0.11
Motor, feeder (kW)	0.12
Heater tank, chemical wash (kW)	6
Total connected power (kW)	19.7*
Main fuse 400V 3N~ (A)**	35*
Max connection area 400V 3N~(L1-L3, N, PE) Cu (mm2)***	35

* 9 kW booster heater is optional.

** Other voltages on request.

*** Cabel 2.5m H07RN-F included.

CONNECTION WATER, DRAIN AND VENTILATION	WD-11
Water quality, hardness (°dH)	2-7
Warm water connection 55-65°C (internal thread)*	R 1/2"
Drain connection, PP pipe (Ø mm)	50
Tank volume, chemical wash (litres)	67
Tank volume, final rinse tank (litres)	6
Total tank volume (litres)	73



1. Electrical connection.
2. Hot water connection/filter R1/2" 250-600 kPa 11 l/min.
3. Drain connection Ø 50.
4. Drain 3 l/sek.
5. Connection ventilation Ø 160, 1200 m³/h.
6. Alternative electrical connection.
7. Alternative hot water connection/filter R1/2" 250-600 kPa 11 l/min.
8. Alternative drain connection Ø 50.
9. Non return valve.
10. Vacuum valve.
11. Output detergent dosing.
12. Service clearance.
13. Connection ventilation Ø 125, 400 m³/h.

Wexiödisk