



WD-18PW

FLEXIBLE POWER WASHER

FEATURES

- Robust stainless steel design with high-quality components ensures reliable operation for many years.
- Easy to operate – one person can easily manage the machine.
- New wash system with wash arms in all four corners for optimal coverage of the entire load.
- Specially designed nozzles ensure efficient and consistent cleaning.
- High capacity – washes up to 30 GN 1/1 containers per cycle.
- Designed for washing GN containers, transport boxes and custom-made trolleys.
- New wash programs with alternating rotation deliver consistently excellent wash results.
- Redesigned rack with improved water flow for enhanced washing performance.
- Powerful pump with high wash pressure for effective cleaning of heavily soiled items.
- Developed for continuous operation and heavy-duty use.
- Reliable wash quality, even under demanding conditions.
- Robust construction for professional kitchens and food production environments.



- Flexible solution – accommodates a wide variety of trolleys and wash items.
- Low operating costs.
- Minimized energy and water consumption.
- Only 10 litres of water per cycle and heat-free drying.
- Pass-through design for optimal workflow; single-sided loading option for compact installations.
- Condensing unit with heat recovery.
- Unique washing technology with rotating load and centrifugal drying.
- Custom adaptations available for customers with special washing requirements.
- Hygiene control – control system with integrated HACCP functionality.
- Adjustable wash and rinse times as well as temperatures for all programs.

OPTIONS

- Single-door or through-fed model
- Floor mounted or pit mounted model
- Steam heated design 150 -250 kPa
- Extra control panel at the other door, double command (only for two roller door model).
- Web Tool with HACCP function
- Web Tool with HACCP function and Cost and consumption
- Shipped dismantled

TECHNICAL DATA	WD-18PW
Wash pump (kW)	4.7
Return pump (kW)	1.3
Tryckstegringspump (kW)	0.58
Motor turn table (kW)	0.55
Condensing fan (kW)	1.1
Drive motor roller (kW) (Floor mounted)	0.18
Drive motor rollers (kW) (Pit mounted)	2 x 0.18
Booster heater (kW)	12
Heater tank (kW)	36
Heat recovery unit, cooling area (m ²)	51
Fan heat recovery, capacity (m ³ /hour)	1400
Tank volume (litres)	200
Weight, machine in operation (kg)	1450
Maximal omgivningstemperatur för maskin i drift (°C)	35
Degree of protection (IP)	55

* Option

CAPACITY AND OPERATING DATA	WD-18PW
Total time/wash program Eco P1 / P4 (min) *	1.2 **
Total time/wash program Medium P2 / P5 (min) *	6 **
Total time/wash program Heavy P3 / P6 (min) *	10 **
Maximum size of wash ware with C-cage (LxWxH) (mm). Standard for WD-18PW (other cage sizes on request).	L=1260 B=940 H=1820
Maximum weight of wash ware with standard equipment (kg)	250
Water consumption rinse/program (litres)	10*
Compressed air consumption (litres/min)	50
Steam consumption *** (kg/h)	90
Sound level, LPA (dBA) ****	68
Sound level LWA (dBA) ****	82

* Factory setting, adjustable. ** With spin drying.

*** For steam-heated machines. **** According to EN 60 335-2-58, §ZAA.2.8 using instruments complying with Class 1.

CONNECTION, ELECTRICALLY HEATED MACHINE	WD-18PW
Total connected power (kW)	55
Main fuse 400-415V 3N~ (A) *	100
Max.conn.area 400-415V 3N~ (L1-L3, N, PE) (TN-S) Cu (mm ²)	70
Max. short-circuit current I _{cu} (kA)	10

* Other voltage on request.

CONNECTION, STEAM HEATED MACHINE 150-250 KPA*	WD-18PW
Total connected power (kW)	6.1
Main fus 400-415V 3N~ (A) **	20
Max.conn.area 400-415V 3N~ (L1-L3, N, PE) (TN-S) Cu (mm ²)	35
Max. short-circuit current I _{cu} (kA)	10
Steam connection (internal thread)	R1¼"
Connection condense water (internal thread)	R¾"

* Other pressure on request.

** Other voltage on request.

CONNECTION WATER, DRAIN AND VENTILATION	WD-18PW
Water quality, hardness (°dH)	2 - 7
Cold water conn. 5-12°C (internal thread)	R¾"
Hot water conn. 50-65°C (internal thread)	R¾"
Compressed air 600kPa (internal thread)	R½"
Drain connection, PP pipe (ø mm)	50
Water capacity cold water, pressure (kPa) *	300
Water capacity cold water, flow (litres/min)	30
Water capacity hot water min/max pressure (kPa)	100/600
Floor drain(litres/sec)	3
Ventilation, anslutning (ø mm)	160
Heat load to the room, latent / sensibel / total (kW)	4.5 / 6.5 / 11

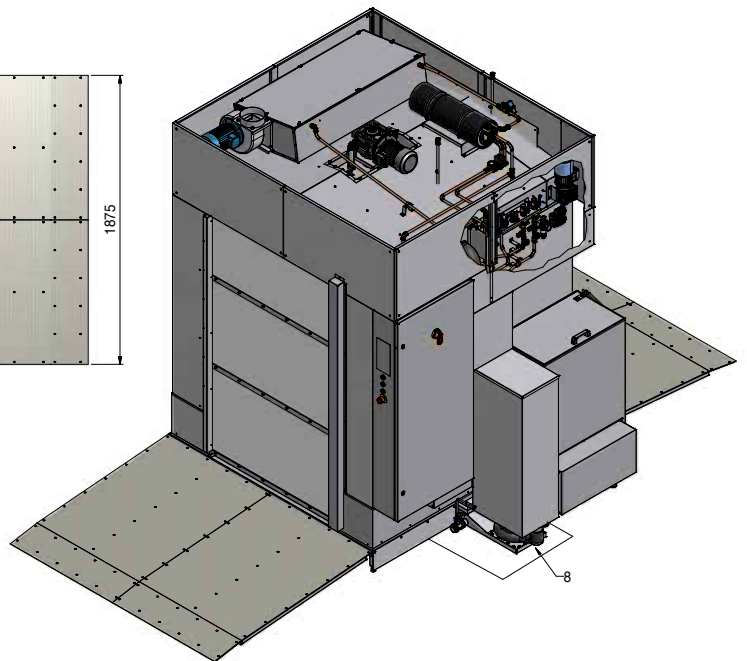
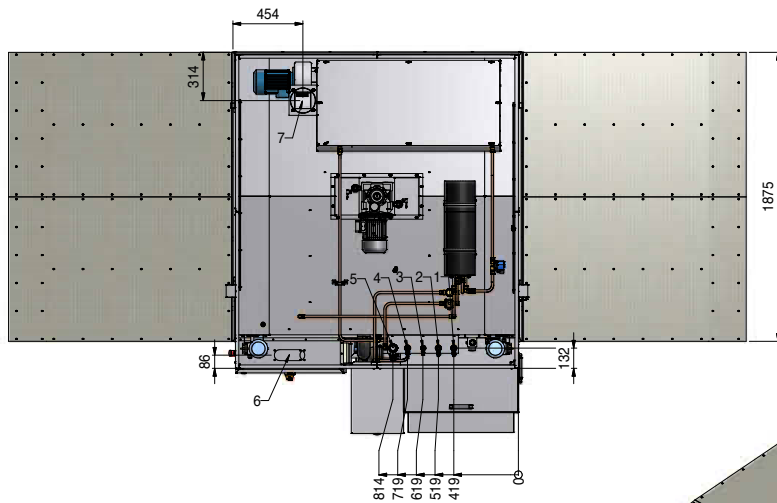
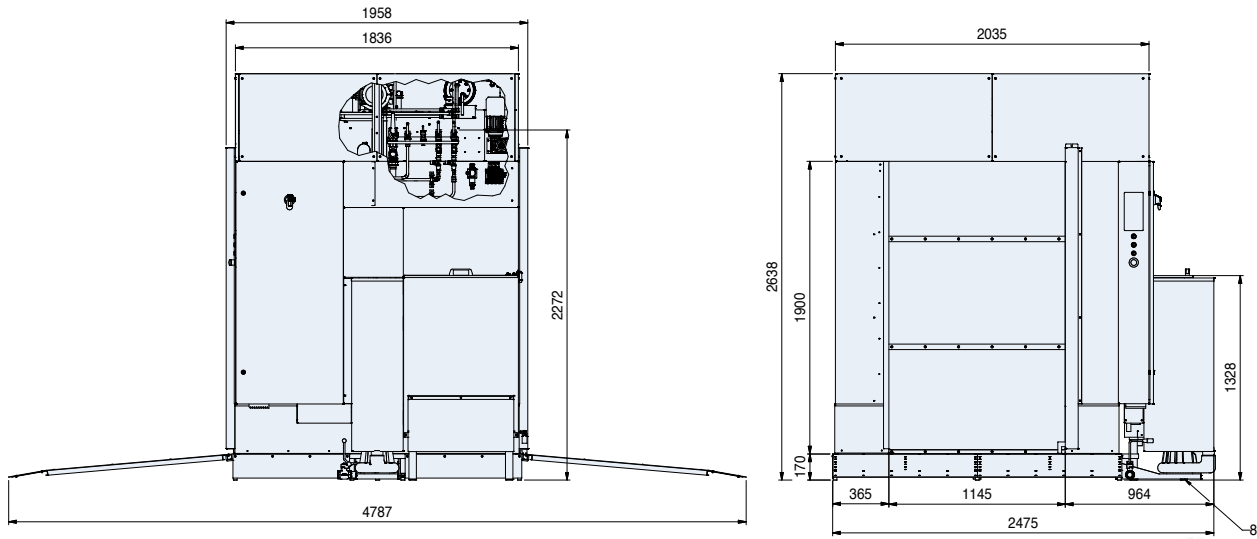
* At lower pressure, the machine should be equipped with a break tank.

SIZE AND WEIGHT FOR TRANSPORTATION *	WD-18PW
Size complete machine LxWxH (m)	2.6x2.0x2.75
Weight complete machine (kg)	1350
Package size part 1 LxWxH (m)**	2.6x2.0x2.25
Package size part 2 LxWxH (m) **	2.2 x 2.0 x 0.8
Weight part 1 (kg)**	850
Weight part 2 (kg)**	580

* Packaging included.

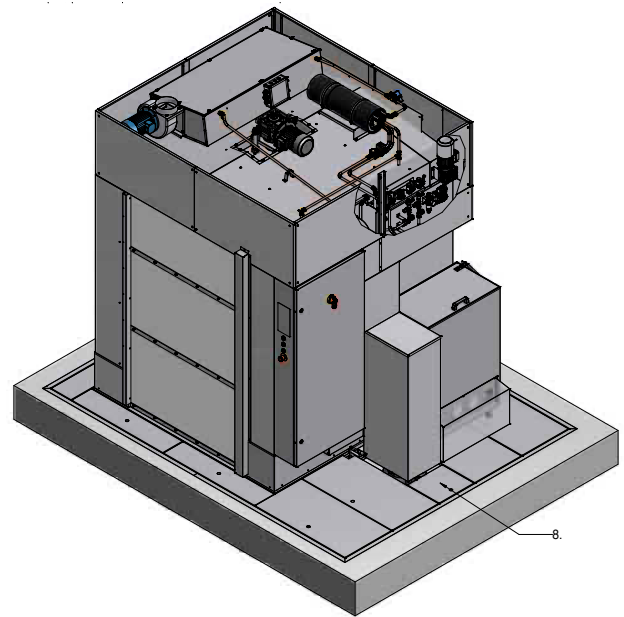
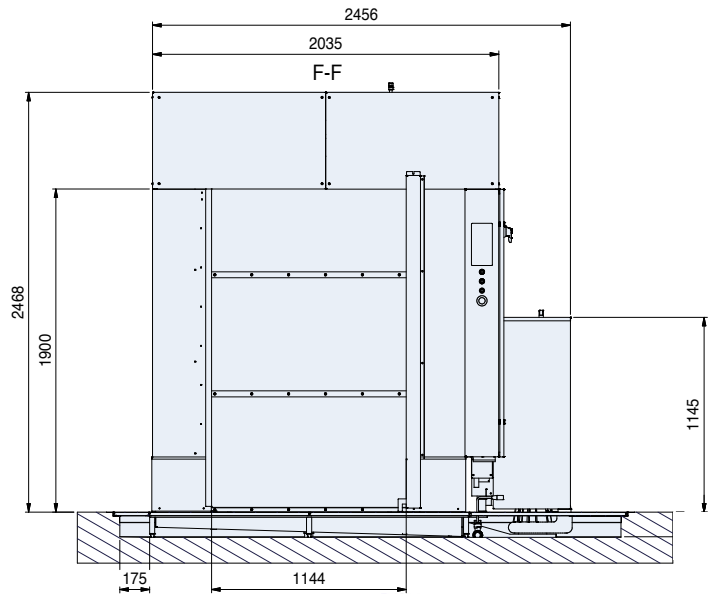
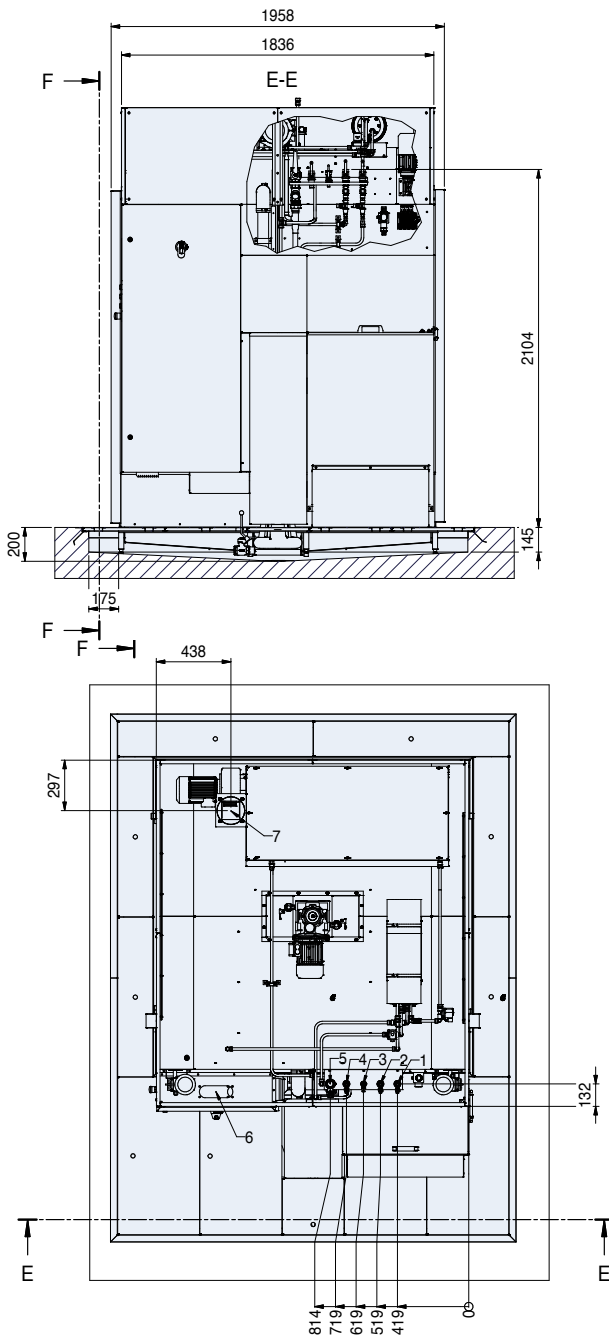
** Delivery in 2 pieces. If necessary the machine can be further dismantled.

Dimensional drawings - floor mounted



1. Hot water DN20, 30 l/min, 300 kPa
2. Cold water DN20, 30 l/min, 300 kPa
3. Compressed air DN15, 600 kPa, 50 l/min
4. Condensate DN20
5. Steam DN32, 150-250 kPa, 90 kg/h
6. Electrical connection 52,5 kW (el.heating)
4,5 kW (steam heating)
7. Ventilation connection Ø160 mm,
1400 m³/h (60sec./program)
8. Floor drain (200 l/min)

Dimensional drawings - pit mounted model



1. Hot water DN20, 30 l/min, 300 kPa
2. Cold water DN20, 30 l/min, 300 kPa
3. Compressed air DN15, 600 kPa, 50 l/min
4. Condensate DN20
5. Steam DN32, 150-250 kPa, 90 kg/h
6. Electrical connection 52,5 kW (el.heating)
4,5 kW (steam heating)
7. Ventilation connection Ø160mm, 1400 m³/h
(60sec./program)
8. Floor drain (200 l/min)

When installed pit mounted, a mounting frame and cover plates are included in the delivery. The recess in the floor must be 200 mm deep.

We reserve the right to change technical data.

Wexiödisk

TELEPHONE: +46 470 77 12 00 ADDRESS: Mårdvägen 4 SE-352 45 Växjö SWEDEN
E-MAIL: wexiodisk@wexiodisk.com WEBB: www.wexiodisk.com