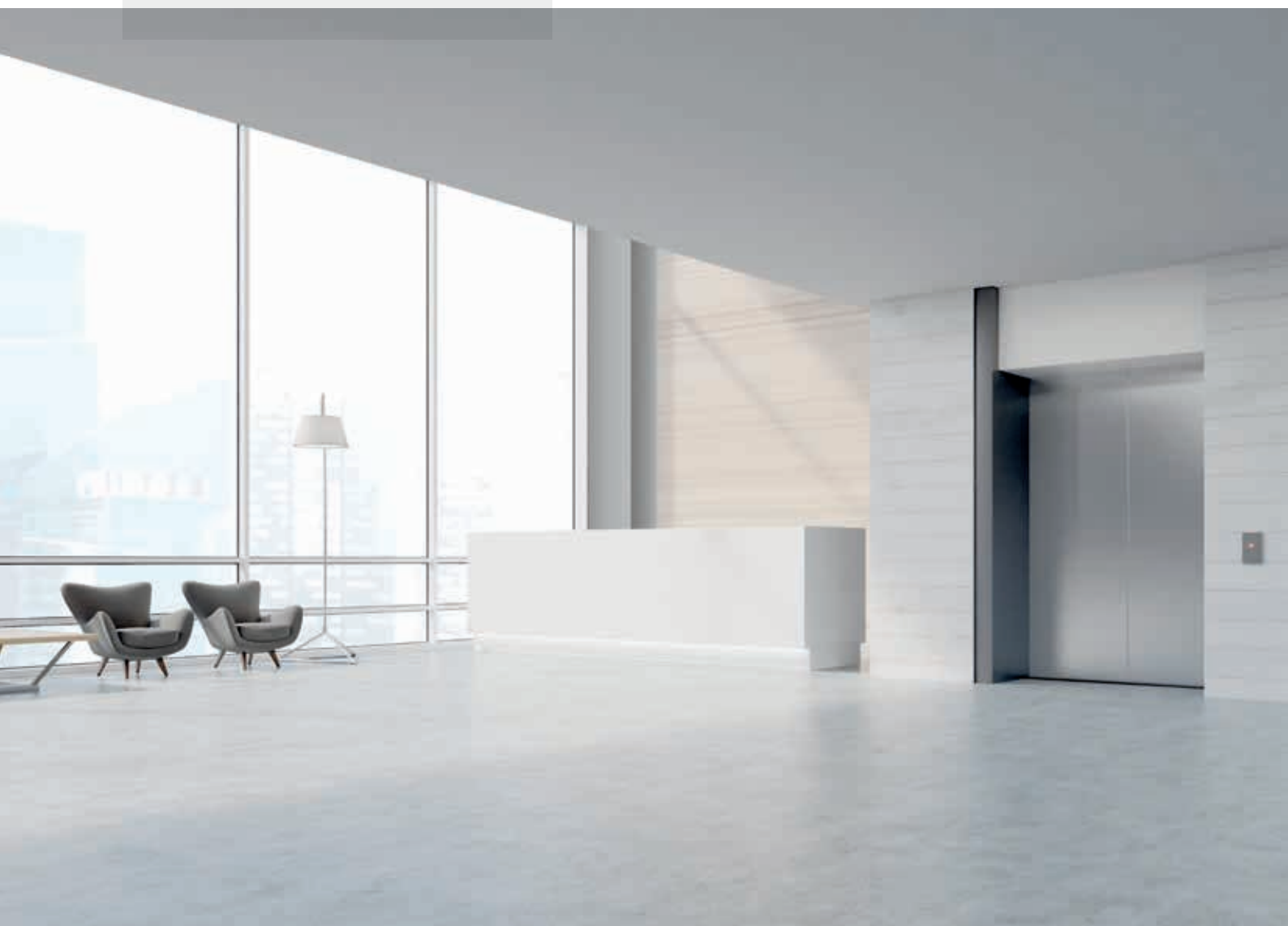




More than **800'000 lifts** worldwide
with **GMV technology**



GREEN LIFT TRACTION MRL

MAIN REASONS TO CHOOSE GREEN LIFT TRACTION MRL

1

- > **HIGH QUALITY**, the Warranty Period could be extended up to **10 Years**.

GMV, with its heritage, competences and know-how, is the only Elevator Manufacturer Company that could offer the 10 Years Warranty Extension

2

- > **CONFORT AND ENERGY EFFICIENCY**

Smooth Acceleration and deceleration, floor levelling and low vibrations, thanks to VVVF encoder control.

Reduced energy consumption, thanks to:

- Gearless machine with permanent magnets
- LED lightning with standby function (reduced consumption up 75% and 10 times extended duration compared to traditional lights)

3

- > **REDUCED SHAFT DIMENSION WITH NO PROJECT LIMIT**

- No machine Room
- Short-Pit and Short-Headroom version available

4

- > **SAFETY**

- Manual Emergency Electric Operation carried out with Power Supply
- Automatic Emergency Electric Operation: back to main floor and doors opening with Power failure, with Main Switch ON (black-out)
- Manual Emergency Electric Operation could be done during Power Failure, with Main Switch ON
- Emergency Operation with Motor Management (optional)
- Fire Resistance Doors, according to EN 81-58, E60 - E120 EI30 - EI60 - EI90 - EI120





> **GREEN LIFT TRACTION MRL ADVANTAGES:**

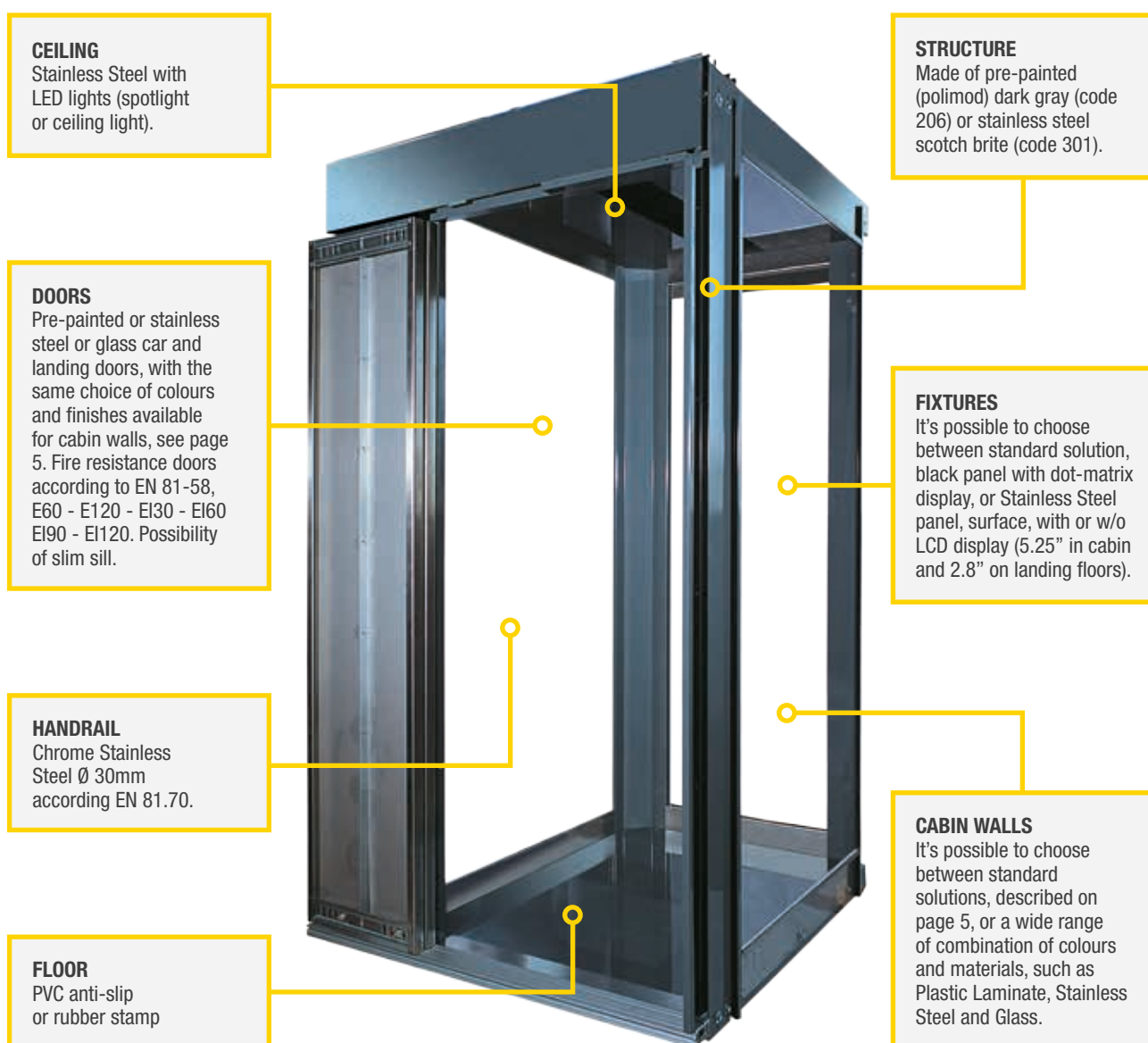
- **COMPETITIVE PRICE**
compared to electric elevators machine room less (MRL)
- **NO DOWNFORCES ON BUILDING STRUCTURE**
thanks to machine positioning, on top of guide rails, that drives forces down to the pit
- **DESIGN AND CAR FINISHES:**
wide range of colours and materials choice available for car and doors finishes, to better integrate the elevator into the architectural context of the building
- **EASY REPERIBLE SPARE PARTS**
Technical information, spare parts, technical tools required for its maintenance and programming are readily available from the manufacturer at the right price
- **LOW INSTALLATION COSTS**
- **RELIABLE MAINTENANCE SERVICE**

WARRANTY EXTENSION TO 10 YEARS *guarantees Lifts quality - because warranty means quality - and the assurance of spare parts availability for 10 Years. It ensures also high efficiency and cost restriction.*

TMC CAR

(Tailor Made Car)

> **GMV lifts** got a tailor-made cabin, customizable, solid and light, ideal for low energy consumption lifts. Simplified assembly. Cabin walls, as well as car fixtures, could be customized on owners' desires and are easily **replaceable** allowing fast restyling. Cabins with **panoramic walls** are available. We can doors w/o door jambs, to allow maximum freedom in the realization of the entrances.



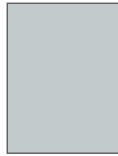
STANDARD CABIN TMC COLORS & MATERIALS

Cabin walls - Car and Landing Doors*

FACED



001 Beige



004 Light grey



005 White

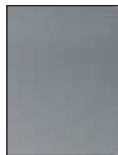


007 Oak

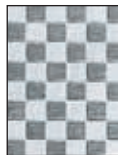


006 Cherry wood

STAINLESS STEEL*



301 Scotch brite



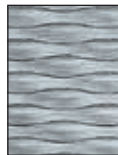
302 Checkers



303 Linen



304 Leather



305 5WL

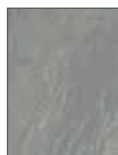
GLASS*



801 Glass

Floor coatings

PVC



501 Light grey



502 Dark grey

PRE-PAINTED SHEET METAL (Polimod)*



201 Beige



204 Light grey



205 Dark grey

PLASTIC LAMINATED



112 Yellow ochre



110 Water green



113 Blue



109 Pearl aluminium



106 Stone silver frost finish



111 White grey stone



101 Birch



107 Light cherry wood



108 Dark cherry wood



103 Whitenened oak



102 Wenge



104 Ebony



105 Whitenened walnut

GAMMA A BOLLI

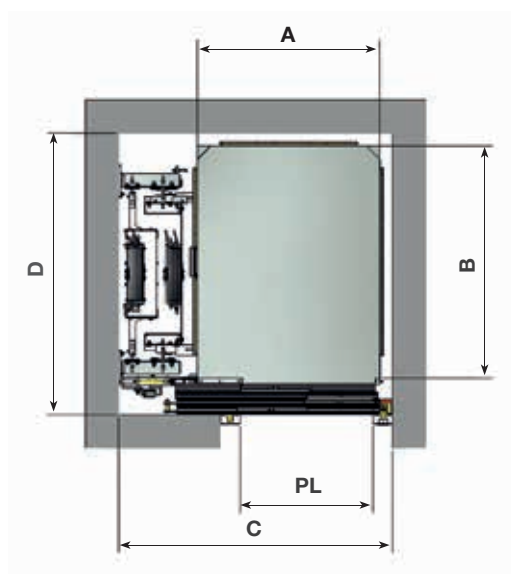


701 Grey

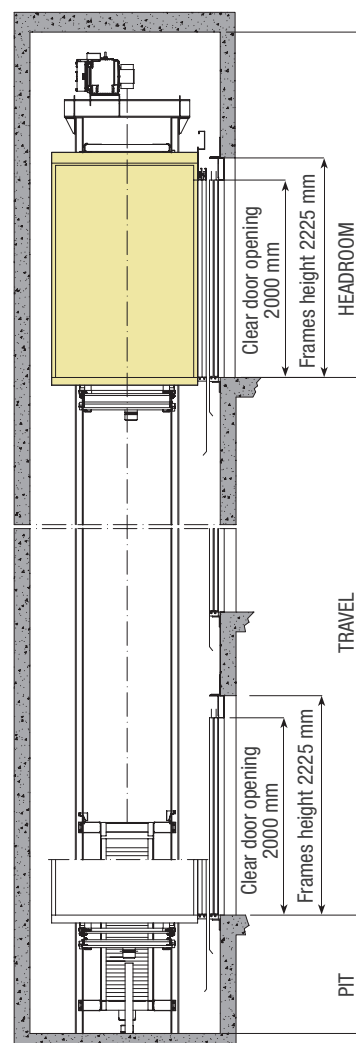


702 Black

SHAFT PLAN



SHAFT SECTION



Speed (m/s)	1	
Max number of stops / services	12/24	
Max car travel (m)	35	
Min. headroom (mm)	Standard	3400/3800
	Ridotta	2500
Min. pit (mm)	Standard	1000
	Ridotta	600

Notes:

Non-contractual information subject to conditions of use.

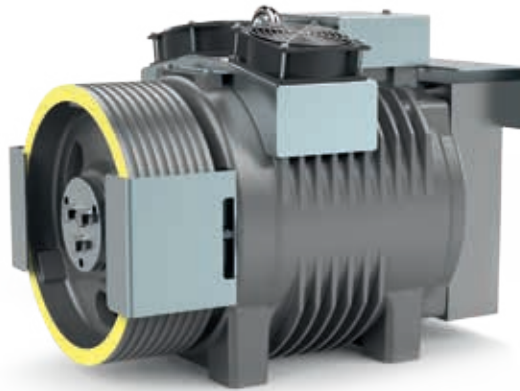
Capacity up to 630kg and door openings up to 850mm, standard headroom is 3400mm.

Capacity more than 630kg and/or door openings 900/1000mm standard headroom is 3800mm.

STANDARD DIMENSIONS*

Payload [kg]	No. of passengers	Car dimensions [mm]		Entrances [No.]	Clear door opening [mm]	Min. shaft dimensions with doors opening at side [mm]	
		A	B		PL	C	D
350	4	800	1200	1	750	1350	1550
450	6	950	1300	1	800/850/900	1500/1500/1550	1650
		1000 (*)	1250 (*)	1	800/850	1500	1600
					900	1550	1600
				2 opposti	800/850	1500	1790
					900	1550	1790
		1000 (*)	1300 (*)	1	800/850	1500	1650
					900	1550	1650
				2 opposti	800/850	1500	1840
					900	1550	1840
630	8	1100 (*)	1400 (*)	1	800/900	1600	1750
				2 opposti	800/900	1600	1940
900	12	1400 (*)	1500 (*)	1	900/1000	1950	1850
				2 opposti	900/1000	1950	2040
1000	13	1100 (*)	2110 (*)	1	900/1000	1650/1750	2450
				2 opposti	900/1000	1650/1750	2650

Notes: Non-contractual information subject to conditions of use. Shaft dimensions refer to orthogonal spaces. The cabin dimensions shown in the table with an asterisk are in accordance with EN 81-70. For any cabin dimensions not shown in the table, please contact GMV Sales Office. For doors with central openings, please contact GMV sales office. For adjacent (90°) openings, please contact GMV sales office.



TECHNICAL FEATURES

Drive	Traction
Machine	Gearless with permanent magnet synchronous motor
Description	<p>MRL Elevator, with machine installed on top of the guide rails:</p> <p>1:1 standard pit and headroom for 350 - 450- 630kg capacity</p> <p>2:1 standard pit and headroom for 900 - 1000kg capacity</p> <p>2:1 short-pit and short-headroom for 350 - 450 - 630 - 900- 1000kg capacity</p>
Machine room	Unnecessary
Intended use	Residential buildings, offices, hotels, public and private buildings
Conformity to Directives and Standards	Elevator Norm 2014/33/UE; Electromagnet Compatibility Norm 2016/30/UE. Harmonized Norm: EN81.20 - EN81.50 (Safety Rules for Elevators); EN 81.28 (Elevator Tele-alarm); Architectural Barriers Removal (DL13/89 o EN81.70). On option EN81.58 (Fire Resistance Doors); EN81.21 (Short-pit and 7or short-headroom); EN81.73 (Safety rules in case of fire presence)
Safety components	<ul style="list-style-type: none"> • Safety gear with descent one-direction actuating mechanism. • A3 Certificated Brakes for ascent high-speed intervention.
Electric Components	<ul style="list-style-type: none"> • Control Panel, installed on side of one landing door. • Universal, collective down, collective up/down, duplex down, duplex up/down, triplex down, triplex up/down • Automatic Rescue Device to the closest floor, door opening with Power Failure (black-out) • Automatic up/down Emergency Operation • Manual Emergency Operation – unbalanced movement, assisted by backup battery • Emergency Operation with Motor Management (optional) • Pre-cabled Electric Lines – Plastic conduits included • Communication System according EN81.28 • Motor Power 360V
Schaft type	Concrete / Brick / Metal structure



GMV S.p.A.

• **Sales & Export Office:**

Strada per Biandrate, 110/112

28100 Novara (NO)

Tel +39 0321 67 76 11

Fax +39 0321 05 77 15

• **Headquarter:**

Via Don Gnocchi, 10

20016 Pero (MI) - Italy

Tel +39 02 33 93 01

Fax +39 02 33 90 379

e-mail: info@gmv.it

www.gmv.it/en



GMV worldwide



GMV's quality systems are certified. Furthermore, we have introduced the "6 sigma" concept as a total quality philosophy, up to the complete testing of the products.

This document is for information purposes only. We reserve the right to modify at any time the reported specifications, without notice. We recommend that you view actual samples of car finishes, as there may be slight differences to those illustrated in the brochure