

Sileo XS

ULTRA QUIET MOTORIZATION

LINE & LOW VOLTAGE
TUBULAR MOTORS
FOR INTERIOR
WINDOW TREATMENT



GAPOSA



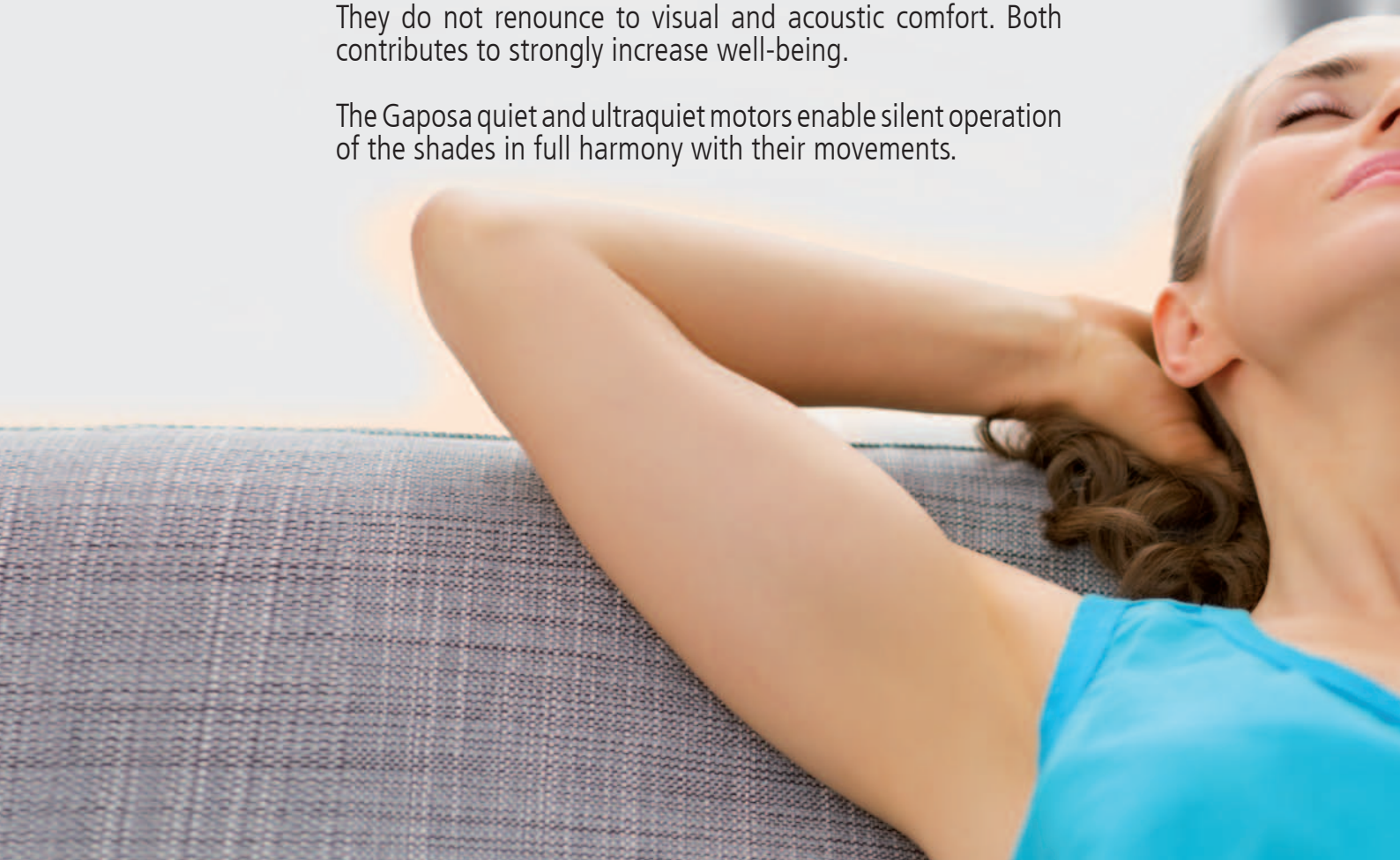
Generating comfort

Users are increasingly aware of technologies available today for the natural light modulation and the direct sun protection.

They are demanding more and more comfort in their residential or commercial buildings.

They do not renounce to visual and acoustic comfort. Both contributes to strongly increase well-being.

The Gaposia quiet and ultraquiet motors enable silent operation of the shades in full harmony with their movements.





Improving the acoustics standards

Gaposa's technological leadership in quiet motorization is once more proven by its **revolutionary planetary worm drive gearing**.

This new patented concept is a major innovation in the window covering motorization field, thus setting a new standard.

15 years ago Gaposa was a pioneer in such engineering developments with the **silent spring brake system** which is today a feature of the complete range of tubular motors.

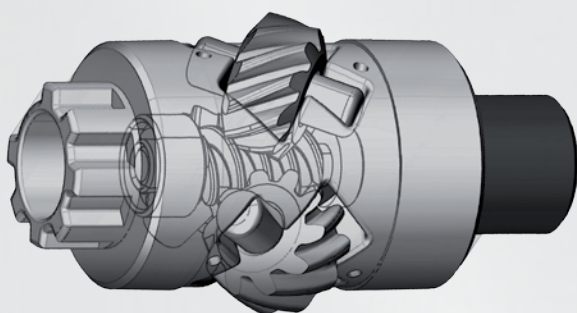
Gaposa engineering team was then concerned in erasing the stopping and tilting noise of the brake.

gileo

ULTRA QUIET MOTORIZATION

XS

*Engineered with
superior noise
reduction technology;*



What makes the **XS** range so unique is the **planetary worm drive gearing**: it provides an ultra quiet operation without any constraint in using dampening components inside the motor for noise and vibration absorption.

XSDC main features:

- ▶ Quiet operations
- ▶ Constant and controlled speed
- ▶ Start and stop speed-ramps
- ▶ Power saving
- ▶ Easy limits setting
- ▶ Easy and safe wiring connection
- ▶ Dry contact inputs

XS30DC

The most silent and powerful DC tubular motor in 25 mm range for window coverings today available in the market. The XS30DC is able to replace and compete with 2 types of motors generally offered in the market: the 25 mm and the 28 mm motors.

It features a speed control algorithm which keeps motor rotation constant in all load conditions for a perfect alignment of the blinds.

XS40DC XS40

The line (AC) and low (DC) voltage 35mm motors provide quiet yet robust operation.

The AC motor is available in different torques up to 6 Nm.

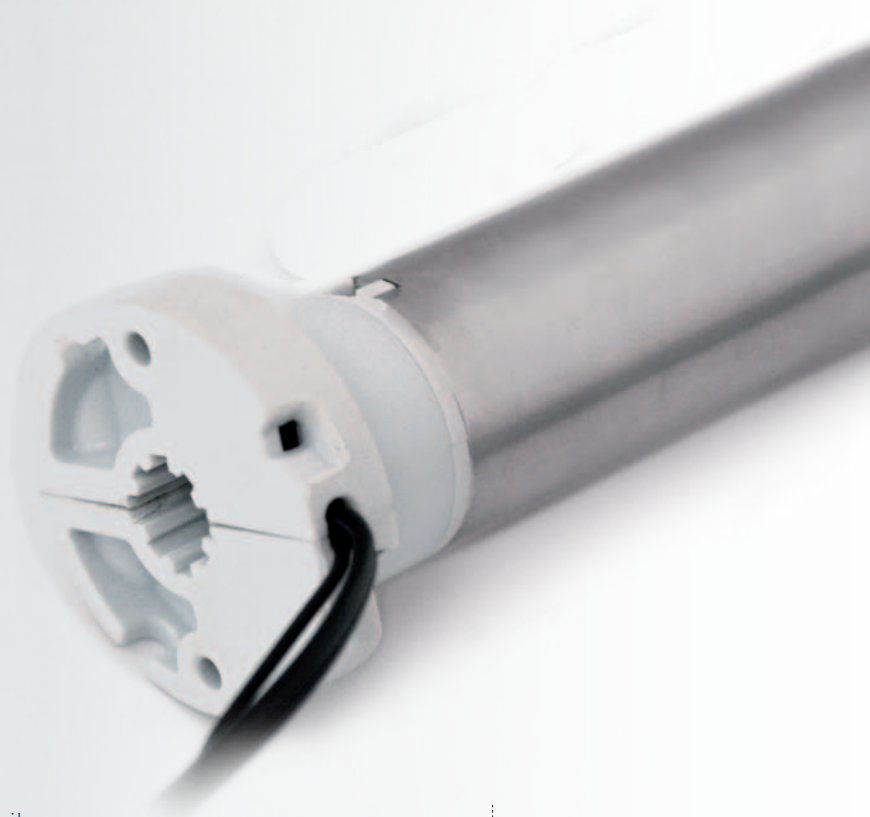
The DC type features a speed control algorithm which keeps constant motor rotation in all load conditions for a perfect alignment of the blinds.

The start and stop speed-ramps offer a smooth stopping on top and bottom limits for a better comfort perception.

XS50DC XS50

It is the most powerful motor (45mm) of the XS range yet assuring ultra quiet performance. This feature allows the XS50 to keep the same acoustic performance even moving multi band or big size shades. So while the motor runs, all you will notice is the glare of the room changing with no noise!

The DC type features a speed control algorithm which keeps constant motor rotation in all load conditions for a perfect alignment of the blinds.



Low voltage range

XS3DC 1.130

BATTERY MOTOR*

- * Available in 2 options:
- Integrated rechargeable lithium battery;
 - Exterior battery wand

Technical details

Torque (Nm)	Speed (rpm)	P. supply (VDC)	Power (W)	Absorption (A)	Limit switch max turns
1.1	30	12	12	1.1	55

XS3DC 1.530

XS3DC 228

Technical details

Torque (Nm)	Speed (rpm)	P. supply (V)	Power (W)	Absorption (A)	Limit switch max turns
1.5	30	24	20	0.8	55
2	28	24	25	1.1	55

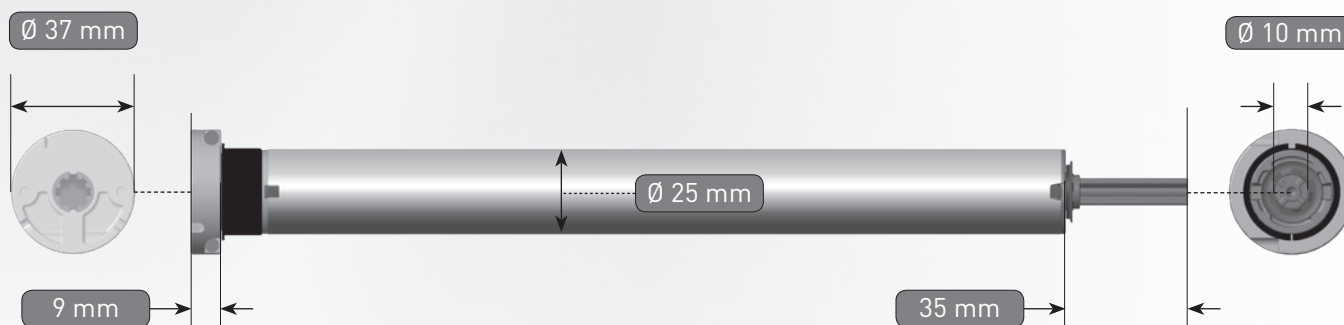
Options:

- Dry contacts
- Built-in radio receiver



Main features

Standard cable length	0.5 m w/connector	Duty rating	10 min
Wires	2x0.5 mm ²	Protection	IP30
Working temperature	-10°C/+40°C		



Geo XS40

Low voltage range

XS4DC 226

Technical details

Torque (Nm)	Speed (rpm)	P. supply (V)	Power (W)	Absorption (A)	Limit switch max turns
2	26	24	36	1.5	55

Main features

Standard cable length	0.5 m w/connector	Duty rating	10 min
Wires	2x0.5 mm ²	Protection	IP30
Working temperature	-10°C/+40°C		

Options:

- Dry contacts
- Built-in radio receiver



230V - Line voltage range

XS4330

XS4620

Technical details

Torque (Nm)	Speed (rpm)	P. supply (V~)	Power (W)	Absorption (A)	Limit switch max turns
3	30	230	90	0.4	160 - 40
6	20	230	120	0.6	160 - 40

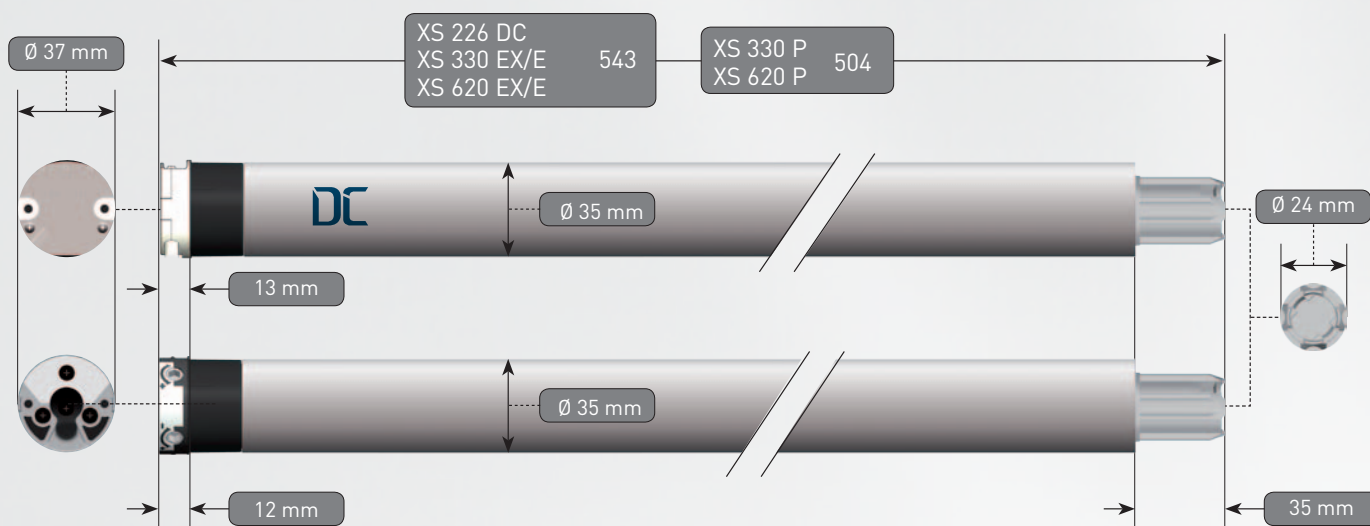
Versions:

- Mechanical limits
- Electronic encoded
- Electronic encoded with built-in radio receiver

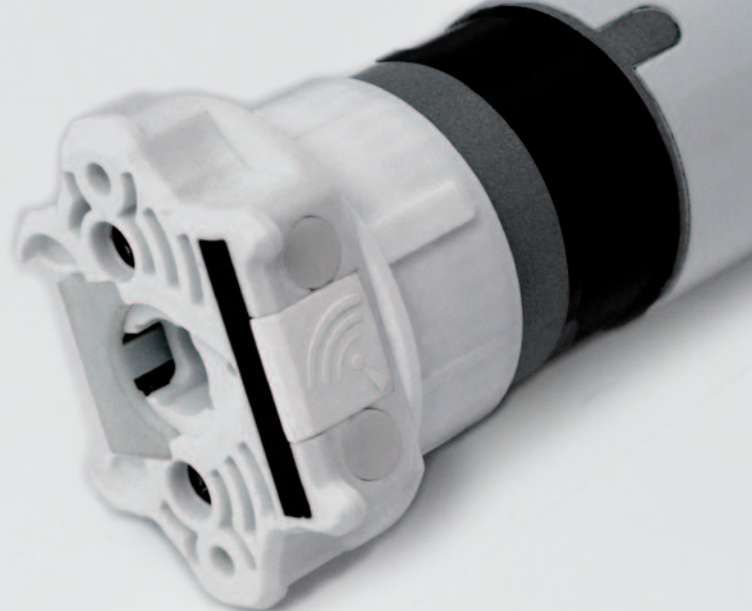


Main features

Standard cable length	2.5 m	Duty rating	4 min
Wires	3x0.75 mm ²	Protection	IP44
Working temperature	-10°C/+40°C		



Sileo XS50



24V - Low voltage range

Technical details

XS5DC 426*

*Available on June 2017

Torque (Nm)	Speed (rpm)	P. supply (V)	Power (W)	Absorption (A)	Limit switch max turns
4	26	24	55	2.9	55

Options:

- Dry contacts
- Built-in radio receiver



Main features

Standard cable length	0.5 m w/connector	Duty rating	10 min
Wires	2x0.5 mm ²	Protection	IP30
Working temperature	-10°C/+40°C		

Power and Control plug-in cables



230V - Line voltage range

Technical details

XS5 530

Torque (Nm)	Speed (rpm)	P. supply (V~)	Power (W)	Absorption (A)	Limit switch max turns
5	30	230	156	0.7	80 - 28

Versions:

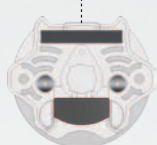
- Mechanical limits
- Electronic encoded
- Electronic encoded with built-in radio receiver



Main features

Standard cable length	2.5 m	Duty rating	4 min
Wires	3x0.75 mm ²	Protection	IP44
Working temperature	-10°C/+40°C		

60x54 mm



Ø 29 mm

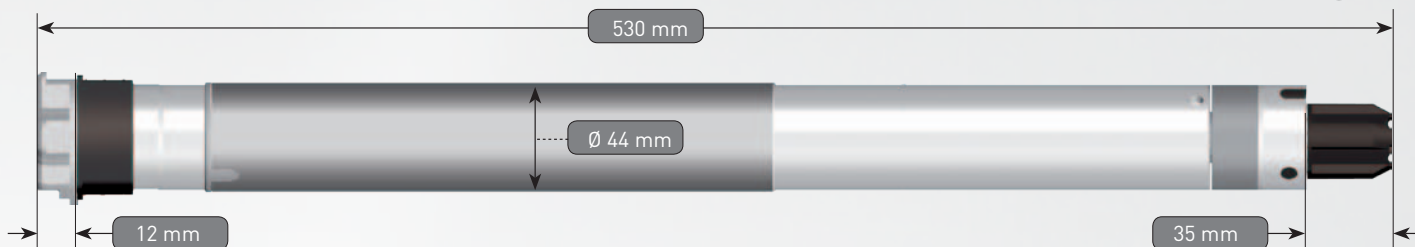


530 mm

Ø 44 mm

12 mm

35 mm



24V DC Power distribution panel 5 motors

- ▶ Fully assembled and ready for DC and dry contact connections
- ▶ Fully certified Meanwell SP-240-24 transformer delivers 10 Amps of power with peak load capability of 360 Watts for 3 seconds
- ▶ Input Voltage 100~240Vac @ 3.6 Amps
- ▶ Operating Temperature Range: -25~+70°C
- ▶ High Efficiency 94% with Built-In PFC power supply with Standard Protections: Short Circuit, Overload, Over Voltage and Over Temperature
- ▶ 5 Motors Power Distribution Board with removable 2-Conductor Wire Screw Terminal connectors protected with 3.5 Amp fuse + removable 4 Conductors Wire Screw Terminal for dry contact connections.
- ▶ Approximate Weight 1.8 kg



GAPOSA srl

via Ete, 90 - 63900 Fermo - Italy
Tel. +39.0734.22071 - Fax +39.0734.226389
www.gaposa.com - info@gaposa.com

GAPOSA INC.

3920 Providence Road
Newtown Square PA 19073 • USA
Tel. 610 325 3697 • Fax 610 356 3474
www.gaposa.com

KAISER NIENHAUS Komfort & Technik GmbH

Münsterstraße 30b
46397 Bocholt • Deutschland
Tel. +49(0)2871/246506 • Fax +49(0)2871/2465070
www.kaiser-nienhaus.de • info@kaiser-nienhaus.de

GAPOSA S.E. EUROPE LTD

Kv. Serdika bl. 15 – vñB – et.2 – ap.20
Sofia 1379 • Bulgaria
Tel. +0030 6981 547 300
www.gaposa.com • sakis@gaposa.com

GAPOSA FRANCE sarl

Park Aktiland II • 7, rue de Lombardie
69800 Saint-Priest • France
Tel. +33 (0)4 72 79 74 30 • Fax +33 (0)4 37 25 98 55
www.gaposa.com • france@gaposa.com

GAPOSA ESPAÑA 99 sl

Pol. Ind. Els Mollons • C/ Cullerers, 27
46970 Alaquàs (Valencia) • España
Tel. +34.961501380 • Fax +34.961519298
espana@gaposa.com • gaposa@ctv.es